

Copyright is owned by the Author of the thesis. Permission is given for a copy to be downloaded by an individual for the purpose of research and private study only. The thesis may not be reproduced elsewhere without the permission of the Author.

APPENDICES

Appendix 1: Maps of study site locations.

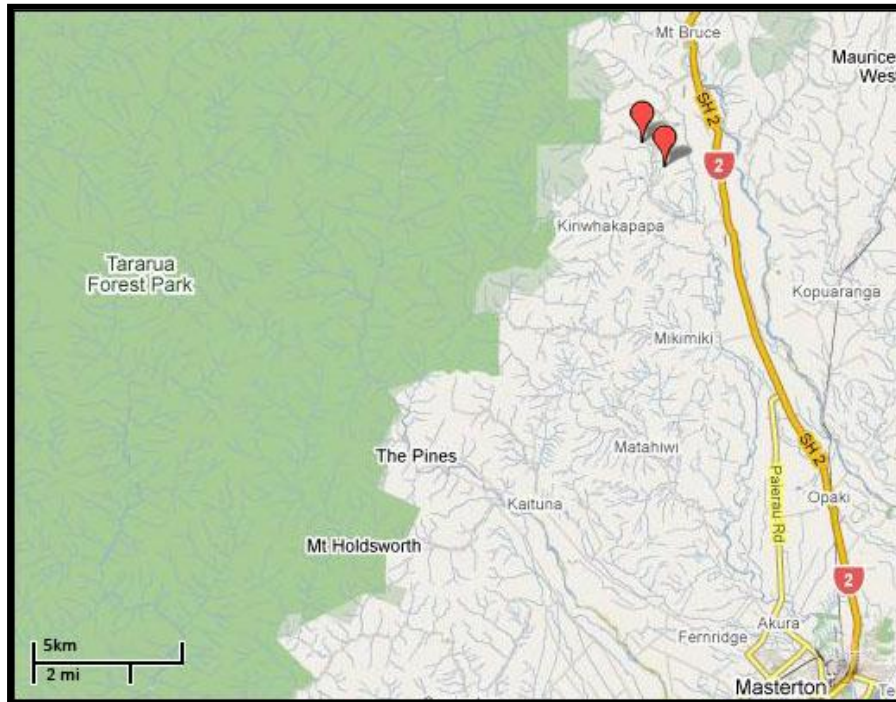


Figure 1: Map of two study sites within the Wairarapa region. Just north of Masterton, Kiriwhakapapa Road. Red markers represent study sites used to provide data for both chapter 2 and chapter 4. Blue markers represent study sites which were added for data collection in chapter 4 (supplementary study sites).

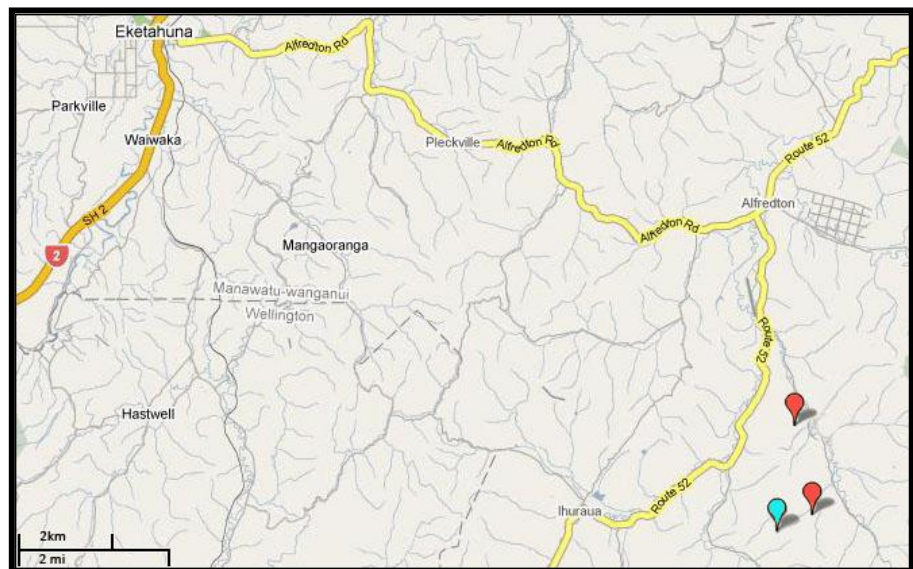


Figure 1: Map of study sites within the Wairarapa region. Alfredton, Flat Bush Road. Red markers represent study sites used to provide data for both chapter 2 and chapter 4. Blue markers represent study sites which were added for data collection in chapter 4 (supplementary study sites).

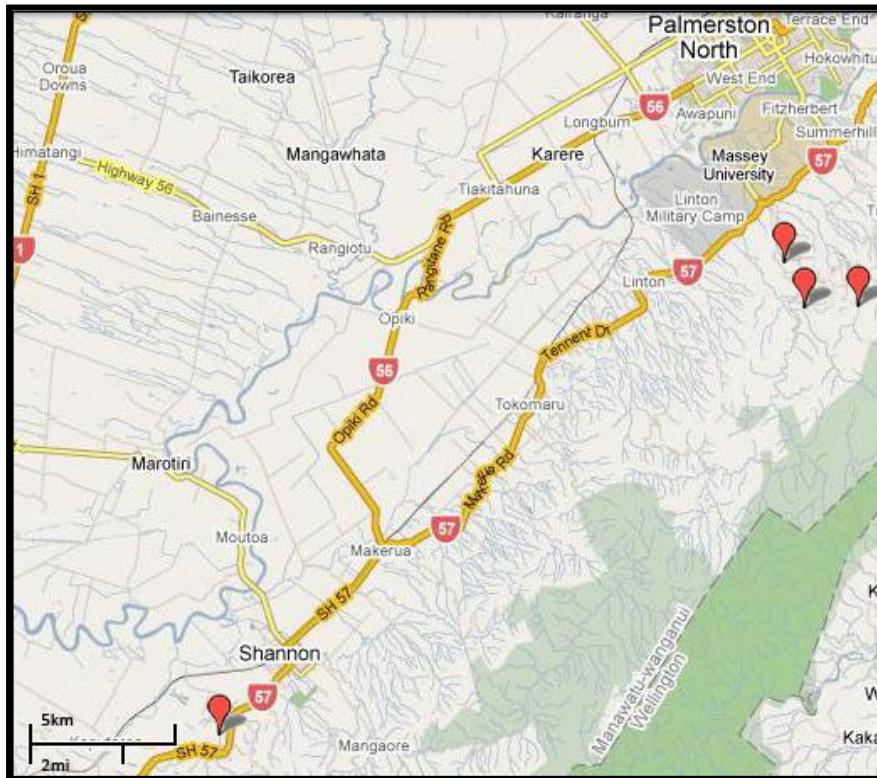


Figure 2: Map of study sites in the Manawatu region. Three at the back of Massey University, Palmerston North and one off State Highway 47, South of Shannon. Red markers represent study sites used to provide data for both chapter 2 and chapter 4. Blue markers represent study sites which were added for data collection in chapter 4 (supplementary study sites).

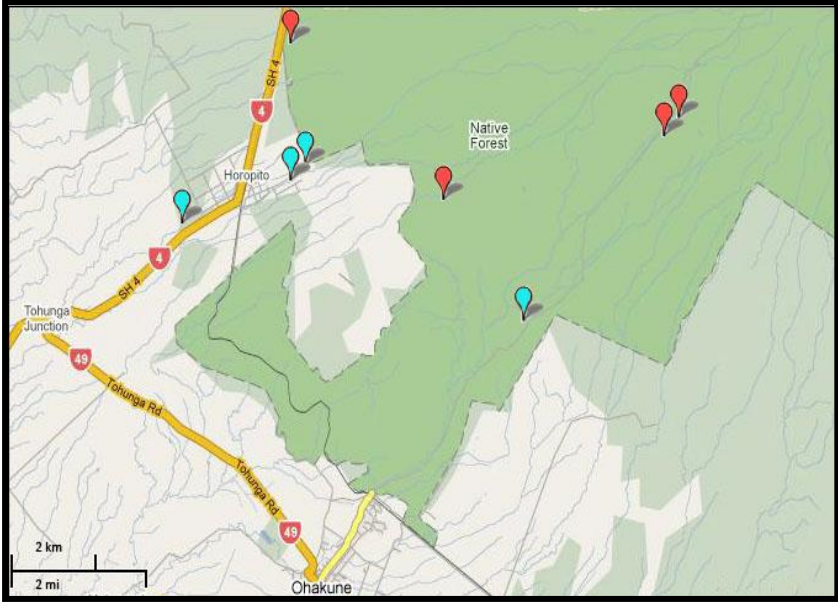
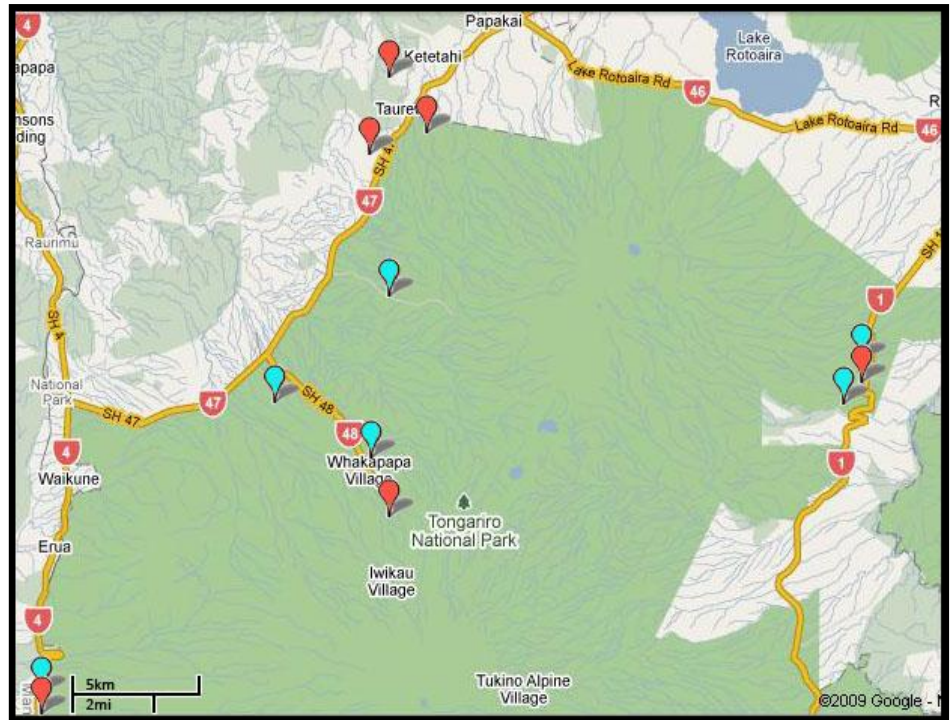


Figure 3: Map of study sites within Tongariro National Park region. Red markers represent study sites used to provide data for both chapter 2 and chapter 4. Blue markers represent study sites which were added for data collection in chapter 4 (supplementary study sites).

Appendix 2:
Patch characteristics at each of the study sites.

Site	Region	Altitude (metres)	Proportion manuka cover (%)	Patch plant richness	Patch plant Simpsons Index	Log ₁₀ Patch size (ha)	Plant Ordination Axis 1	Plant Ordination Axis 2	Surrounding Land Use	Frequency of surrounding manuka
A.Shilton	Manawatu	180	35	11	0.65	0.113943	0.6971	-0.1506	Native bush	Moderate
D.McIntyre	Manawatu	63	50	8	0.5	0.908485	0.6484	-0.5565	Native bush	Moderate
I.Satherley	Manawatu	160	50	9	0.5	0.113943	0.5213	-0.5955	Pasture	Moderate
J.Love	Manawatu	165	55	11	0.45	0.230449	0.5447	-0.3628	Native bush	Moderate
Bishops	Tongariro	860	50	12	0.5	0.30103	0.243	-0.3282	Native bush	Abundant
BonDes	Tongariro	850	50	12	0.5	0.90309	-0.1347	-0.9103	Native bush	Abundant
Desert Rd	Tongariro	870	30	17	0.7	0.176091	0.1336	0.3162	Native bush	Abundant
Desert Rd_II	Tongariro	840	60	12	0.4	0.176091	-0.1343	-0.4378	Native bush	Abundant
Erua	Tongariro	800	30	16	0.7	0.079181	-0.1529	0.1326	Native bush	Moderate
Horopito/Rail	Tongariro	760	30	20	0.7	0.230449	0.2565	0.8759	Native bush	Abundant
Kapoors Rd	Tongariro	780	25	15	0.6	0.079181	-0.5496	1.1288	Tussock	Moderate
Mangatepopo	Tongariro	980	30	5	0.6	0.30103	-0.7392	0.7111	Tussock	Moderate
Mangahuia Tr	Tongariro	900	30	8	0.6	0.079181	-0.5838	0.7376	Tussock	Moderate
Matapuna_Pri	Tongariro	800	50	4	0.5	0.079181	0.7303	-0.5669	Native bush	Sparse
Matapuna_Pub	Tongariro	800	40	8	0.6	0.079181	0.7978	-0.371	Native bush	Abundant
Middle Rd	Tongariro	720	25	18	0.68	0.255273	0.8281	0.1603	Native bush	Sparse
Ohakune	Tongariro	1210	25	10	0.75	0.113943	-1.6469	-0.3375	Tussock	Abundant
Ohakune_II	Tongariro	1200	30	10	0.7	0.113943	-0.3375	-0.3453	Tussock	Abundant

Site	Region	Altitude (metres)	Proportion manuka cover (%)	Patch plant richness	Patch plant Simpsons Index	Log ₁₀ Patch size (ha)	Plant Ordination Axis 1	Plant Ordination Axis 2	Surrounding Land Use	Frequency of surrounding manuka
Ohakune Rd	Tongariro	780	35	17	0.65	0.079181	-0.5742	-0.5895	Native bush	Moderate
Papakai	Tongariro	645	20	14	0.8	0.041393	-0.1965	1.5324	Tussock	Moderate
Railway/Erua	Tongariro	820	30	26	0.7	0.176091	0.2588	0.3397	Native bush	Abundant
Silica Rapids	Tongariro	1270	15	19	0.8	0.079181	-1.828	0.6046	Tussock	Moderate
Sir Ed Outdoor	Tongariro	636	30	19	0.7	0.041393	-0.524	0.4253	Tussock	Moderate
Taranaki Falls	Tongariro	1160	25	8	0.55	0.041393	-0.9582	1.0453	Tussock	Moderate
Campbells	Wairarapa	312	40	10	0.6	0.113943	0.7116	-0.4546	Native bush	Abundant
Campbell_II	Wairarapa	310	50	12	0.5	0.146128	0.6337	-0.5249	Native bush	Abundant
McKenzie_N	Wairarapa	195	40	7	0.5	0.278754	0.7944	-0.4828	Pasture	Moderate
McKenzie_S	Wairarapa	180	40	10	0.5	0.342423	0.7891	-0.4833	Native bush	Moderate
McKenzie	Wairarapa	340	40	6	0.6	0.113943	0.7488	-0.5122	Pasture	Sparse

Appendix 3:

Insect taxa including the locations and dates they were caught on manuka flowers during behavioural observations.

Insect Guild	Family	Voucher No.	Genus/Species	Gender	Region	Site	Date
Honeybees	Apidae	S005	<i>Apis mellifera</i>	-	Wairarapa	McKen (Nth)	10/12/07
"Native bees"	Colletidae	S158	<i>Hylaeus capitosus</i>	Female	Tongariro	Horopito/Railway	18/01/08
		S081	<i>Hylaeus capitosus</i>	Female	Wairarapa	Campbell	29/12/07
		S002	<i>Leioproctus boltini</i>	Female	Wairarapa	McKen (Sth)	10/12/07
		S194	<i>Leioproctus boltoni</i>	Female	Tongariro	Ohakune Mountain Rd	29/01/08
		S078	<i>Leioproctus boltoni</i>	Female	Wairarapa	Campbell	29/12/07
		S085	<i>Leioproctus boltoni</i>	Female	Wairarapa	McKen (Nth)	30/12/07
		S086	<i>Leioproctus boltoni</i>	Female	Wairarapa	McKen (Nth)	30/12/07
		S092	<i>Leioproctus boltoni</i>	Female	Wairarapa	McKen (Sth)	30/12/07
		S004	<i>Leioproctus boltini</i>	Male	Wairarapa	McKen (Sth)	10/12/07
		S090	<i>Leioproctus boltoni</i>	Male	Wairarapa	McKen (Sth)	30/12/07
		S097	<i>Leioproctus boltoni</i>	Male	Manawatu	A.Shilton	03/01/08
		S146	<i>Leioproctus imitatus</i>	Female	Manawatu	D.McIntyre	05/01/08
		S161	<i>Leioproctus imitatus</i>	Female	Tongariro	Kapoors Rd	19/01/08
		S165	<i>Leioproctus imitatus</i>	Female	Tongariro	Kapoors Rd	19/01/08
		S177	<i>Leioproctus imitatus</i>	Female	Tongariro	Railway/Erua	20/01/08
		S053	<i>Leioproctus imitatus</i>	Male	Manawatu	A.Shilton	23/12/07
		S055	<i>Leioproctus imitatus</i>	Male	Manawatu	A.Shilton	23/12/07
		S056	<i>Leioproctus imitatus</i>	Male	Manawatu	A.Shilton	23/12/07
		S075	<i>Leioproctus imitatus</i>	Male	Wairarapa	Campbell	29/12/07
		S076	<i>Leioproctus imitatus</i>	Male	Wairarapa	Campbell	29/12/07
		S149	<i>Leioproctus imitatus</i>	Male	Manawatu	D.McIntyre	05/01/08
		S152	<i>Leioproctus imitatus</i>	Male	Manawatu	D.McIntyre	06/01/08
		S147	<i>Leioproctus paahaumaa</i>	Male	Manawatu	D.McIntyre	05/01/08
		S148	<i>Leioproctus paahaumaa</i>	Male	Manawatu	D.McIntyre	05/01/08
		S150	<i>Leioproctus paahaumaa</i>	Male	Manawatu	D.McIntyre	05/01/08

"Native bees"	Colletidae	S151	<i>Leioproctus paahaumaa</i>	Male	Manawatu	D.McIntyre	05/01/08
		S074	<i>Leioproctus pango</i>	Female	Wairarapa	Campbell	29/12/07
		S084	<i>Leioproctus relegatus</i>	Male	Wairarapa	McKen (Nth)	30/12/07
		S214	<i>Leioproctus imitatus</i>	Female	Tongariro	Ohakune Mountain Rd	29/01/08
		S225	<i>Leioproctus imitatus</i>	Female	Tongariro	Bishop	30/01/08
		S317	<i>Leioproctus imitatus</i>	Female	Tongariro	Ohakune Mountain Rd	29/01/08
		S318	<i>Leioproctus imitatus</i>	Female	Tongariro	Ohakune Mountain Rd	29/01/08
		S321	<i>Leioproctus imitatus</i>	Female	Tongariro	Silica Rapids	31/01/08
"Wasps"	Halictidae	S168	<i>Lasioglossum sordidum</i>	Male	Tongariro	Kapoors Rd	19/01/08
	Gasteruptiidae	S021	<i>Pseudofoenus sp.</i>	-	Manawatu	A.Shilton	22/12/08
		S048	<i>Pseudofoenus sp.</i>	-	Manawatu	I.Satherly	23/12/07
S050		<i>Pseudofoenus sp.</i>	-	Manawatu	A.Shilton	23/12/07	
"Big fly"	Vespidae	S257	<i>Vesputula vulgaris</i>	-	Tongariro	Bishop	30/01/08
	Calliphoridae	S009	<i>Calliphora quadrimaculata</i>	-	Manawatu	J.Love	21/12/07
		S105	<i>Calliphora stygia</i>	-	Manawatu	A.Shilton	03/01/08
		S160	<i>Calliphora stygia</i>	-	Tongariro	Kapoors Rd	19/01/08
		S188	<i>Calliphora stygia</i>	-	Tongariro	Sir Ed Outdoor Pursuits	25/01/08
		S171	<i>Calliphora stygia</i>	-	Tongariro	Ohakune Mountain Rd	29/01/08
		S282	<i>Calliphora stygia</i>	-	Tongariro	Silica Rapids	31/01/08
		S326	<i>Pollenia sp.</i>	-	Tongariro	Silica Rapids	31/01/08
		Muscidae	S319	<i>Millerina pennata</i>	-	Tongariro	Silica Rapids
		S320	<i>Millerina pennata</i>	-	Tongariro	Silica Rapids	31/01/08
		S323	<i>Spilogona sp.</i>	-	Tongariro	Silica Rapids	31/01/08
	Sarcophagidae	S079	<i>Oxysarcodexia varia</i>	-	Wairarapa	Campbell	29/12/08
	Stratiomyidae	S299	<i>Odontomyia sp.E (Broad)</i>	-	Tongariro	Ohakune Mountain Rd_2	01/02/08
	Syrphidae	S145	<i>Psilota decessa</i>	-	Manawatu	D.McIntyre	05/01/08
	Tabanidae	S176	<i>Dasybasis sarpa</i>	-	Tongariro	Kapoors Rd	19/01/08
S187		<i>Dasybasis sarpa</i>	-	Tongariro	Sir Ed Outdoor Pursuits	25/01/08	
S245		<i>Dasybasis viridis</i>	-	Tongariro	Bishop	30/01/08	
S251		<i>Dasybasis viridis</i>	-	Tongariro	Bishop	30/01/08	
S217		<i>Scaptia brevialpis</i>	-	Tongariro	Ohakune Mountain Rd	29/01/08	
S304		<i>Scaptia brevialpis</i>	-	Tongariro	Ohakune Mountain Rd_2	01/02/08	

"Big fly"	Tabanidae	S162	<i>Scaptia lerda</i>	-	Tongariro	Kapoors Rd	19/01/08
		S221	<i>Scaptia lerda</i>	-	Tongariro	Bishop	30/01/08
		S227	<i>Scaptia lerda</i>	-	Tongariro	Bishop	30/01/08
		S234	<i>Scaptia lerda</i>	-	Tongariro	Bishop	30/01/08
		S238	<i>Scaptia lerda</i>	-	Tongariro	Bishop	30/01/08
		S167	<i>Scaptia milleri</i>	-	Tongariro	Kapoors Rd	19/01/08
	Tachinidae	S169	<i>Scaptia milleri</i>	-	Tongariro	Kapoors Rd	19/01/08
		S183	<i>Neotachina sp.</i>	-	Tongariro	Railway/Erua	20/01/08
		S197	<i>Neotachina sp.</i>	-	Tongariro	Ohakune Mountain Rd	29/01/08
		S202	<i>Neotachina sp.</i>	-	Tongariro	Ohakune Mountain Rd	29/01/08
		S218	<i>Neotachina sp.</i>	-	Tongariro	Ohakune Mountain Rd	29/01/08
		S219	<i>Neotachina sp.</i>	-	Tongariro	Ohakune Mountain Rd	29/01/08
		S220	<i>Neotachina sp.</i>	-	Tongariro	Ohakune Mountain Rd	29/01/08
		S223	<i>Neotachina sp.</i>	-	Tongariro	Bishop	30/01/08
		S231	<i>Neotachina sp.</i>	-	Tongariro	Bishop	30/01/08
		S241	<i>Neotachina sp.</i>	Female	Tongariro	Bishop	30/01/08
		S242	<i>Neotachina sp.</i>	Female	Tongariro	Bishop	30/01/08
		S249	<i>Neotachina sp.</i>	-	Tongariro	Bishop	30/01/08
		S256	<i>Neotachina sp.</i>	Female	Tongariro	Bishop	30/01/08
		S293	<i>Neotachina sp.</i>	-	Tongariro	Ohakune Mountain Rd_2	01/02/08
		S297	<i>Neotachina sp.</i>	-	Tongariro	Ohakune Mountain Rd_2	01/02/08
		S298	<i>Neotachina sp.</i>	-	Tongariro	Ohakune Mountain Rd_2	01/02/08
		S303	<i>Neotachina sp.</i>	-	Tongariro	Ohakune Mountain Rd_2	01/02/08
		S306	<i>Neotachina sp.</i>	-	Tongariro	Ohakune Mountain Rd_2	01/02/08
		S314	<i>Neotachina sp.</i>	-	Tongariro	Ohakune Mountain Rd	29/01/08
		S315	<i>Neotachina sp.</i>	-	Tongariro	Ohakune Mountain Rd	29/01/08
	S028	<i>Pales sp.</i>	-	Manawatu	I.Satherly	23/12/07	
	S207	<i>Perrissina albiceps</i>	-	Tongariro	Ohakune Mountain Rd	29/01/08	
	S174	<i>Perrissina sp.A</i>	Female	Tongariro	Kapoors Rd	19/01/08	
	S203	<i>Perrissina sp.A</i>	Female	Tongariro	Ohakune Mountain Rd	29/01/08	
	S204	<i>Perrissina sp.A</i>	Female	Tongariro	Ohakune Mountain Rd	29/01/08	
	S205	<i>Perrissina sp.A</i>	Female	Tongariro	Ohakune Mountain Rd	29/01/08	

"Big fly"	Tachinidae	S206	<i>Perrissina sp.A</i>	Female	Tongariro	Ohakune Mountain Rd	29/01/08
		S209	<i>Perrissina sp.A</i>	Female	Tongariro	Ohakune Mountain Rd	29/01/08
		S172	<i>Perrissina sp.A</i>	Female	Tongariro	Ohakune Mountain Rd	29/01/08
		S232	<i>Perrissina sp.A</i>	Female	Tongariro	Bishop	30/01/08
		S295	<i>Perrissina sp.A</i>	Female	Tongariro	Ohakune Mountain Rd_2	01/02/08
		S296	<i>Perrissina sp.A</i>	Female	Tongariro	Ohakune Mountain Rd_2	01/02/08
		S170	<i>Perrissina sp.B</i>	Female	Tongariro	Kapoors Rd	19/01/08
		S248	<i>Perrissina sp.B</i>	Female	Tongariro	Bishop	30/01/08
		S239	<i>Proscissio montana</i>	-	Tongariro	Bishop	30/01/08
		S324	<i>Zealandotachina nigrifemorata</i>	-	Tongariro	Silica Rapids	31/01/08
		S325	<i>Zealandotachina nigrifemorata</i>	-	Tongariro	Silica Rapids	31/01/08
		S013	<i>Zealandotachina subtilis</i>	-	Manawatu	J.Love	21/12/07
		S020	<i>Zealandotachina subtilis</i>	-	Manawatu	A.Shilton	22/12/07
		S024	<i>Zealandotachina subtilis</i>	-	Manawatu	I.Satherly	22/12/07
		S025	<i>Zealandotachina subtilis</i>	-	Manawatu	I.Satherly	23/12/07
		S026	<i>Zealandotachina subtilis</i>	-	Manawatu	I.Satherly	23/12/07
		S029	<i>Zealandotachina subtilis</i>	-	Manawatu	I.Satherly	23/12/07
		S030	<i>Zealandotachina subtilis</i>	-	Manawatu	I.Satherly	23/12/07
		S032	<i>Zealandotachina subtilis</i>	-	Manawatu	I.Satherly	23/12/07
		S033	<i>Zealandotachina subtilis</i>	-	Manawatu	I.Satherly	23/12/07
		S063	<i>Zealandotachina subtilis</i>	-	Manawatu	A.Shilton	23/12/07
		S098	<i>Zealandotachina subtilis</i>	-	Manawatu	A.Shilton	03/01/08
		S099	<i>Zealandotachina subtilis</i>	-	Manawatu	A.Shilton	03/01/08
		S106	<i>Zealandotachina subtilis</i>	-	Manawatu	I.Satherly	03/01/08
		S107	<i>Zealandotachina subtilis</i>	-	Manawatu	I.Satherly	03/01/08
		S108	<i>Zealandotachina subtilis</i>	-	Manawatu	I.Satherly	03/01/08
		S109	<i>Zealandotachina subtilis</i>	-	Manawatu	I.Satherly	03/01/08
		S110	<i>Zealandotachina subtilis</i>	-	Manawatu	I.Satherly	03/01/08
		S111	<i>Zealandotachina subtilis</i>	-	Manawatu	I.Satherly	03/01/08
		S112	<i>Zealandotachina subtilis</i>	-	Manawatu	I.Satherly	03/01/08
		S113	<i>Zealandotachina subtilis</i>	-	Manawatu	I.Satherly	03/01/08
		S114	<i>Zealandotachina subtilis</i>	-	Manawatu	I.Satherly	03/01/08

"Big fly"	Tachinidae	S115	<i>Zealandotachina subtilis</i>	-	Manawatu	I.Satherly	03/01/08
		S117	<i>Zealandotachina subtilis</i>	-	Manawatu	I.Satherly	03/01/08
		S118	<i>Zealandotachina subtilis</i>	-	Manawatu	I.Satherly	03/01/08
		S119	<i>Zealandotachina subtilis</i>	-	Manawatu	I.Satherly	03/01/08
		S120	<i>Zealandotachina subtilis</i>	-	Manawatu	I.Satherly	03/01/08
		S121	<i>Zealandotachina subtilis</i>	-	Manawatu	I.Satherly	03/01/08
		S122	<i>Zealandotachina subtilis</i>	-	Manawatu	I.Satherly	03/01/08
		S123	<i>Zealandotachina subtilis</i>	-	Manawatu	I.Satherly	04/01/08
		S124	<i>Zealandotachina subtilis</i>	-	Manawatu	I.Satherly	04/01/08
		S125	<i>Zealandotachina subtilis</i>	-	Manawatu	I.Satherly	04/01/08
		S126	<i>Zealandotachina subtilis</i>	-	Manawatu	I.Satherly	04/01/08
		S127	<i>Zealandotachina subtilis</i>	-	Manawatu	I.Satherly	04/01/08
		S129	<i>Zealandotachina subtilis</i>	-	Manawatu	I.Satherly	04/01/08
		S130	<i>Zealandotachina subtilis</i>	-	Manawatu	I.Satherly	04/01/08
		S131	<i>Zealandotachina subtilis</i>	-	Manawatu	I.Satherly	04/01/08
		S132	<i>Zealandotachina subtilis</i>	-	Manawatu	I.Satherly	04/01/08
		S133	<i>Zealandotachina subtilis</i>	-	Manawatu	I.Satherly	04/01/08
		S134	<i>Zealandotachina subtilis</i>	-	Manawatu	I.Satherly	04/01/08
		S222	<i>Zealandotachina varipes</i>	-	Tongariro	Bishop	30/01/08
		S224	<i>Zealandotachina varipes</i>	-	Tongariro	Bishop	30/01/08
	Therevidae	S157	<i>Anabarynchus sp.</i>	-	Tongariro	Papakai	17/01/08
	Tipulidae	S276	<i>Leptotarsus sp.</i>	-	Tongariro	Silica Rapids	31/01/08
		S322	<i>Millerina pennata</i>	-	Tongariro	Silica Rapids	31/01/08
	Muscidae	S100	<i>Spilogona sp.</i>	-	Manawatu	A.Shilton	03/01/08
"Small fly"	Stratiomyidae	S235	<i>Odontomyia chloris</i>	-	Tongariro	Bishop	30/01/08
		S237	<i>Odontomyia chloris</i>	-	Tongariro	Bishop	30/01/08
		S250	<i>Odontomyia chloris</i>	-	Tongariro	Bishop	30/01/08
	Syrphidae	S199	<i>Melanostoma fasciatum</i>	-	Tongariro	Ohakune Mountain Rd	29/01/08
		S136	<i>Psilota decessa</i>	-	Tongariro	Kapoors Rd	19/01/08
	Tabanidae	S240	<i>Dasybasis nigripes</i>	-	Tongariro	Bishop	30/01/08
	Tachinidae	S006	<i>Campylia sp.</i>	-	Wairarapa	McKen (Nth)	10/12/07
	S080	<i>Heteria sp.</i>	-	Wairarapa	Campbells	29/12/07	

"Small fly"	Tachinidae	S198	<i>Phaoniella sp.</i>	-	Tongariro	Ohakune Mountain Rd	29/01/08	
		S275	<i>Zealandotachina nigrifemorata</i>	-	Tongariro	Silica Rapids	31/01/08	
		S104	<i>Zealandotachina subtilis</i>	-	Manawatu	A.Shilton	03/01/08	
	Agromyzidae	S057	<i>Cerodontha sp.</i>	-	Manawatu	A.Shilton	23/12/07	
		S137	<i>Cerodontha angustipennis</i>	-	Manawatu	I.Satherly	04/01/08	
		S216	<i>Cerodontha angustipennis</i>	-	Tongariro	Ohakune Mountain Rd	29/01/08	
		S279	<i>Cerodontha angustipennis</i>	-	Tongariro	Silica Rapids	31/01/08	
		S143	<i>Neoitamus lascus</i>	-	Manawatu	A.Shilton	04/01/08	
	Dolichopodidae	S042	<i>Chrysotimus sp.</i>	-	Manawatu	J.Love	21/12/07	
		S046	<i>Chrysotimus sp.</i>	-	Manawatu	I.Satherly	23/12/07	
		S059	<i>Chrysotimus sp.</i>	-	Manawatu	A.Shilton	23/12/07	
		S066	<i>Chrysotimus sp.</i>	-	Wairarapa	Campbell	29/12/07	
		S070	<i>Chrysotimus sp.</i>	-	Wairarapa	Campbell	29/12/07	
		S140	<i>Chrysotimus sp.</i>	-	Manawatu	I.Satherly	04/01/08	
		S144	<i>Chrysotimus sp.</i>	-	Manawatu	D.McIntyre	05/01/08	
		S246	<i>Chrysotimus sp.</i>	-	Tongariro	Bishop	30/01/08	
		Empididae	S191	<i>Clinorhampha sp.</i>	-	Tongariro	Ohakune Mountain Rd	29/01/08
			S193	<i>Clinorhampha sp.</i>	-	Tongariro	Ohakune Mountain Rd	29/01/08
			S196	<i>Clinorhampha sp.</i>	-	Tongariro	Ohakune Mountain Rd	29/01/08
			S208	<i>Clinorhampha sp.</i>	-	Tongariro	Ohakune Mountain Rd	29/01/08
			S229	<i>Clinorhampha sp.</i>	-	Tongariro	Bishop	30/01/08
	S301		<i>Clinorhampha sp.</i>	-	Tongariro	Ohakune Mountain Rd_2	01/02/08	
	S308		<i>Clinorhampha sp.</i>	-	Tongariro	Ohakune Mountain Rd_2	01/02/08	
	S201		<i>Empidadelphina sp.</i>	-	Tongariro	Ohakune Mountain Rd	29/01/08	
	S041		<i>Hydrellia tritici</i>	-	Manawatu	J.Love	21/12/07	
	S043		<i>Hydrellia tritici</i>	-	Manawatu	J.Love	21/12/07	
	S236		<i>Phyllodromia sp.</i>	-	Tongariro	Bishop	30/01/08	
	S247		<i>Phyllodromia sp.</i>	-	Tongariro	Bishop	30/01/08	
	S252		<i>Phyllodromia sp.</i>	-	Tongariro	Bishop	30/01/08	
	S260	<i>Phyllodromia sp.</i>	-	Tongariro	Bishop	30/01/08		
	S262	<i>Phyllodromia sp.</i>	-	Tongariro	Bishop	30/01/08		
	S265	<i>Phyllodromia sp.</i>	-	Tongariro	Bishop	30/01/08		

"Small fly"	Empididae	S274	<i>Hydrellia enderbii</i>	-	Tongariro	Silica Rapids	31/01/08	
		S277	<i>Hydrellia enderbii</i>	-	Tongariro	Silica Rapids	31/01/08	
	Ephidridae	S044	<i>Hydrellia tritici</i>	-	Manawatu	J.Love	21/12/07	
		S082	<i>Hydrellia tritici</i>	-	Wairarapa	McKen (Nth)	30/12/07	
		S259	<i>Hydrellia tritici</i>	-	Tongariro	Bishop	30/01/08	
		S280	<i>Hydrellia tritici</i>	-	Tongariro	Silica Rapids	31/01/08	
		S283	<i>Hydrellia tritici</i>	-	Tongariro	Silica Rapids	31/01/08	
		S088	<i>Psilopa metallica</i>	-	Wairarapa	McKen (Nth)	30/12/07	
		S264	<i>Psilopa metallica</i>	-	Tongariro	Bishop	30/01/08	
		S291	<i>Psilopa metallica</i>	-	Tongariro	Silica Rapids	31/01/08	
	Sphaeroceridae	S230	<i>Phthitia sp.</i>	-	Tongariro	Bishop	30/01/08	
	Chironomidae	S067	-	-	Wairarapa	Campbell	29/12/07	
		S139	-	-	Manawatu	I.Satherly	04/01/08	
		S180	-	-	Tongariro	Railway/Erua	20/01/08	
		S200	-	-	Tongariro	Ohakune Mountain Rd	29/01/08	
		S273	-	-	Tongariro	Silica Rapids	31/01/08	
		S284	-	-	Tongariro	Silica Rapids	31/01/08	
		S290	-	-	Tongariro	Silica Rapids	31/01/08	
		Phoridae	S138	-	-	Manawatu	I.Satherly	04/01/08
			S285	-	-	Tongariro	Silica Rapids	31/01/08
		"Bibionids"	Bibionidae	S012	<i>Dilophus nigrostigmus</i>	-	Manawatu	J.Love
	S019			<i>Dilophus nigrostigmus</i>	-	Manawatu	J.Love	21/12/07
	S022			<i>Dilophus nigrostigmus</i>	-	Manawatu	A.Shilton	22/12/07
S027	<i>Dilophus nigrostigmus</i>			-	Manawatu	I.Satherly	23/12/07	
S051	<i>Dilophus nigrostigmus</i>			-	Manawatu	A.Shilton	23/12/07	
S054	<i>Dilophus nigrostigmus</i>			-	Manawatu	A.Shilton	23/12/07	
S077	<i>Dilophus nigrostigmus</i>			-	Wairarapa	Campbell	29/12/07	
S102	<i>Dilophus nigrostigmus</i>			-	Manawatu	A.Shilton	03/01/08	
S060	<i>Dilophus nigrostigmus</i>			Female	Manawatu	A.Shilton	23/12/07	
S062	<i>Dilophus nigrostigmus</i>			Female	Manawatu	A.Shilton	23/12/07	
S068	<i>Dilophus tuthilli</i>			-	Wairarapa	Campbell	29/12/07	
S071	<i>Dilophus tuthilli</i>			-	Wairarapa	Campbell	29/12/07	

"Calliphorids"	Calliphoridae	S008	<i>Calliphora quadrimaculata</i>	-	Manawatu	J.Love	21/12/07		
		S156	<i>Calliphora quadrimaculata</i>	-	Tongariro	Papakai	17/01/08		
		S192	<i>Calliphora quadrimaculata</i>	-	Tongariro	Ohakune Mountain Rd	29/01/08		
"Stratiomyid"	Stratiomyidae	S035	<i>Australoberis sp.</i>	-	Wairarapa	McKen (Nth)	10/12/07		
		S089	<i>Australoberis sp.</i>	-	Wairarapa	McKen (Sth)	30/12/07		
"Syrphids"	Stratiomyidae	S253	<i>Odontomyia chloris</i>	-	Tongariro	Bishop	30/01/08		
		S254	<i>Odontomyia chloris</i>	-	Tongariro	Bishop	30/01/08		
		S269	<i>Odontomyia chloris</i>	-	Tongariro	Bishop	30/01/08		
		S270	<i>Odontomyia chloris</i>	-	Tongariro	Bishop	30/01/08		
		S316	<i>Odontomyia chloris</i>	-	Tongariro	Ohakune Mountain Rd	29/01/08		
		S268	<i>Odontomyia sp.A (Small)</i>	-	Tongariro	Bishop	30/01/08		
		S305	<i>Odontomyia sp.A (Small)</i>	-	Tongariro	Ohakune Mountain Rd_2	01/02/08		
		S175	<i>Odontomyia sp.B</i>	-	Tongariro	Kapoors Rd	19/01/08		
		S266	<i>Odontomyia sp.B</i>	-	Tongariro	Bishop	30/01/08		
		S018	<i>Odontomyia sp.C (Large)</i>	-	Manawatu	J.Love	21/12/07		
		S159	<i>Odontomyia sp.C (Large)</i>	-	Tongariro	Horopito/Railway	18/01/08		
		S255	<i>Odontomyia sp.C (Large)</i>	-	Tongariro	Bishop	30/01/08		
		S271	<i>Odontomyia sp.D (Silky)</i>	-	Tongariro	Silica Rapids	31/01/08		
		"Syrphids"	Syrphidae	S073	<i>Allograptia sp.</i>	-	Wairarapa	Campbell	29/12/07
				S182	<i>Allograptia sp.</i>	-	Tongariro	Railway/Erua	20/01/08
S184	<i>Allograptia sp.</i>			-	Tongariro	Railway/Erua	20/01/08		
S190	<i>Allograptia sp.</i>			-	Tongariro	Sir Ed Outdoor Pursuits	25/01/08		
S210	<i>Allograptia sp.</i>			-	Tongariro	Ohakune Mountain Rd	29/01/08		
S211	<i>Allograptia sp.</i>			-	Tongariro	Ohakune Mountain Rd	29/01/08		
S215	<i>Allograptia sp.</i>			-	Tongariro	Ohakune Mountain Rd	29/01/08		
S292	<i>Allograptia sp.</i>			-	Tongariro	Silica Rapids	31/01/08		
S011	<i>Melangyna sp.</i>			-	Manawatu	J.Love	21/12/07		
S072	<i>Melangyna sp.</i>			-	Wairarapa	Campbell	29/12/07		
S181	<i>Melangyna sp.</i>			-	Tongariro	Railway/Erua	20/01/08		
S272	<i>Melangyna sp.</i>			-	Tongariro	Silica Rapids	31/01/08		
"Tabanids"	Tabanidae	S087	<i>Scaptia adrel</i>	-	Wairarapa	McKen (Nth)	30/12/07		
		S093	<i>Scaptia adrel</i>	-	Wairarapa	McKen (Nth)	30/12/07		

"Tabanids"	Tabanidae	S244	<i>Scaptia adrel</i>	-	Tongariro	Bishop	30/01/08		
		S267	<i>Scaptia adrel</i>	-	Tongariro	Bishop	30/01/08		
		S302	<i>Scaptia adrel</i>	-	Tongariro	Ohakune Mountain Rd_2	01/02/08		
		S313	<i>Scaptia adrel</i>	-	Tongariro	Ohakune Mountain Rd	29/01/08		
		S311	<i>Scaptia brevipalpis</i>	-	Tongariro	Ohakune Mountain Rd	29/01/08		
		S243	<i>Scaptia lerda</i>	-	Tongariro	Bishop	30/01/08		
		S016	<i>Scaptia lerda</i>	Male	Manawatu	J.Love	21/12/07		
		S023	<i>Scaptia lerda</i>	Male	Manawatu	A.Shilton	22/12/07		
		S154	<i>Scaptia milleri</i>	-	Wairarapa	Campbell_2	07/01/08		
		"Tachinids"	Tachinidae	S309	<i>Neotachina sp.</i>	-	Tongariro	Ohakune Mountain Rd_2	01/02/08
				S310	<i>Neotachina sp.</i>	-	Tongariro	Ohakune Mountain Rd_2	01/02/08
				S312	<i>Neotachina sp.</i>	-	Tongariro	Ohakune Mountain Rd	29/01/08
				S179	<i>Perrissina sp.</i>	Female	Tongariro	Railway/Erua	20/01/08
				S095	<i>Plagiomyia turbida</i>	-	Wairarapa	McKen (Sth)	30/12/07
				S010	<i>Protostrichia sp.</i>	-	Manawatu	J.Love	21/12/07
S017	<i>Protostrichia sp.</i>			-	Manawatu	J.Love	21/12/07		
S064	<i>Protostrichia sp.</i>			-	Manawatu	A.Shilton	23/12/07		
S103	<i>Protostrichia sp.</i>			-	Manawatu	A.Shilton	03/01/08		
S263	<i>Protostrichia sp.</i>			-	Tongariro	Bishop	30/01/08		
Manuka beetle	Scarabaeidae	S007	<i>Pyronota festiva</i>	-	Wairarapa	McKen (Nth)	10/12/07		
		S014	<i>Pyronota festiva</i>	-	Manawatu	J.Love	21/12/07		
		S015	<i>Pyronota festiva</i>	-	Manawatu	J.Love	21/12/07		
		S031	<i>Pyronota festiva</i>	-	Manawatu	I.Satherly	23/12/07		
		S128	<i>Pyronota festiva</i>	-	Manawatu	I.Satherly	04/01/08		
		S233	<i>Pyronota festiva</i>	-	Tongariro	Bishop	30/01/08		
"Beetles"	Cerambycidae	S153	-	-	Wairarapa	Campbell_2	07/01/08		
		S212	-	-	Tongariro	Ohakune Mountain Rd	29/01/08		
	Coccinellidae	S094	-	-	Wairarapa	McKen (Sth)	30/12/07		
		Crysomelidae	S135	<i>Navomorpha lineata</i>	-	Manawatu	I.Satherly	03/01/08	
	S212		<i>Navomorpha lineata</i>	-	Tongariro	Ohakune Mountain Rd	29/01/08		
	S040		-	-	Manawatu	J.Love	21/12/07		
	S049	-	-	Manawatu	I.Satherly	23/12/07			

"Beetles"	Crysomelidae	S096	-	-	Wairarapa	McKen (Sth)	30/12/07	
		S101	-	-	Manawatu	A.Shilton	03/01/08	
		S189	-	-	Tongariro	Sir Ed Outdoor Pursuits	25/01/08	
	Hydrophilidae	S278	-	-	Tongariro	Silica Rapids	31/01/08	
		Melyridae	S039	-	-	Manawatu	J.Love	21/12/07
	S141		-	-	Manawatu	A.Shilton	04/01/08	
	Mordellidae	S185	-	-	Tongariro	Desert Rd	24/01/08	
	Rhipiphoridae	S045	-	-	Manawatu	I.Satherly	22/12/07	
		S155	-	-	Wairarapa	Campbell_2	07/01/08	
	Scirtidae	S281	-	-	Tongariro	Silica Rapids	31/01/08	
		S286	-	-	Tongariro	Silica Rapids	31/01/08	
		S289	-	-	Tongariro	Silica Rapids	31/01/08	
	Staphylinidae	S300	-	-	Tongariro	Ohakune Mountain Rd_2	01/02/08	
	"Moths"	Crambidae	S034	-	-	Wairarapa	McKen (Sth)	10/12/07
			S069	-	-	Wairarapa	Campbell	29/12/07
"Butterflies"	Lycaenidae	S091	-	-	Wairarapa	McKen (Sth)	30/12/07	
"Hemiptera"	Aphidae	S166	-	-	Tongariro	Kapoors Rd	19/01/08	
		S164	-	-	Tongariro	Kapoors Rd	19/01/08	
	S307	-	-	Tongariro	Ohakune Mountain Rd_2	01/02/08		
	Miridae	S65	-	-	Wairarapa	Campbell	29/12/07	
		S136	-	-	Manawatu	I.Satherly	03/01/08	
S228	-	-	Tongariro	Bishop	30/01/08			
S258	-	-	Tongariro	Bishop	30/01/08			

Appendix 4:

Classification of taxa caught in the intercept and pitfall traps.

Order	M.S./Taxa code	Family	Genus/Species
Coleoptera	C1	Melandryidae	-
	C2	Hydrophilidae	-
	C3	Scarabaeidae	<i>Pyronota festiva</i>
	C4	Cryptophagidae	-
	C5	Salpingidae	-
	C6	Scirtidae	-
	C7	Colydiidae	-
	C8	Corticariidae	-
	C9	Cryptophagidae	-
	C10	Corticariidae	-
	C11	Scirtidae	-
	C12	Corticariidae	-
	C13	Cryptophagidae	-
	C14	Leiodidae	-
	C15	Curculionidae	-
	C16	Ptiridae	-
	C17	Nitidulidae	-
	C18	Mordellidae	-
	C19	Melyridae	-
	C20	Staphylinidae	-
	C21	Mycetophagidae	-
	C22	Hydraenidae	-
	C23	Nitidulidae	-
	C24	Elateridae	-
	C25	Crysolmelidae	-
	C26	Scydmaenidae	-
	C27	Curculionidae	-
	C28	Scarabaeidae	-
	C29	Staphylinidae	-
	C30	Scirtidae	-
	C31	Corticariidae	-
	C32	Corticariidae	-
	C33	Cleridae	-
	C34	Ptilidae	-
	C35	Staphylinidae	-
	C36	Staphylinidae	-
	C37	Staphylinidae	-
	C38	Corticariidae	-
	C39	Carabidae	-
	C40	Mycetophagidae	-
	C41	Leiodidae	-
	C42	Leiodidae	-

Order	M.S./Taxa code	Family	Genus/Species
Coleoptera	C43	Staphylinidae	-
	C44	Cerylonidae	-
	C45	Nosodendridae	-
	C46	Staphylinidae	-
	C47	Crysomelidae	-
	C48	Scarabaeidae	-
	C49	Mordellidae	-
	C50	Corylophidae	-
	C51	Curculionidae	-
	C52	Silvanidae	-
	C53	Corticariidae	-
	C54	Nitidulidae	-
	C55	Pselaphidae	-
	C56	Colydiidae	-
	C57	Curculionidae	-
	C58	Scirtidae	-
	C59	Scarabaeidae	-
	C60	Corticariidae	-
	C61	Curculionidae	-
	C62	Staphylinidae	-
	C63	Scirtidae	-
	C64	Corylophidae	-
	C65	Corylophidae	<i>Sericoderus sp.</i>
	C66	Salpingidae	-
	C67	Mycetophagidae	-
	C68	Nitidulidae	-
	C69	Lucanidae	<i>Ceratognathus parrianus</i>
	C70	Colydiidae	-
	C71	Carabidae	-
	C72	Staphylinidae	-
	C73	Corylophidae	-
	C74	Cantharidae	-
	C75	Cerambycidae	-
	C76	*Omitted*	
	C77	Cryptophagidae	-
	C78	Staphylinidae	-
	C79	Hydrophilidae	-
	C80	Crysomelidae	-
	C81	Mordellidae	-
	C82	Rhipiphoridae	-
	C83	Rhipiphoridae	-
	C84	Crysomelidae	-
	C85	Staphylinidae	-
	C86	Staphylinidae	-
	C87	Colydiidae	-

Order	M.S./Taxa code	Family	Genus/Species
Coleoptera	C88	Staphylinidae	-
	C89	Coccinellidae	-
	C90	Cryomelidae	-
	C91	Carabidae	-
	C92	Cerambycidae	-
	C93	Anobiidae	-
	C94	Mordellidae	-
	C95	Elateridae	-
	C96	Staphylinidae	-
	C97	Leiodiidae	-
	C98	Phycosecidae	-
	C99	Corticariidae	-
	C100	Cantharidae	-
	C101	Corticariidae	-
	C102	Carabidae	-
	C103	Anthicidae	-
	C104	Cavognathidae	-
	C105	Cleridae	-
	C106	Coccinellidae	-
	C107	Anthribidae	-
	C108	Staphylinidae	-
	C109	Anthicidae	-
	C110	Staphylinidae	-
	C111	Scarabaeidae	-
	C112	Carabidae	-
	C113	Coccinellidae	-
	C114	Eucnemidae	-
	C115	Hydrophilidae	-
	C116	Scraptiidae	-
	C117	Colydiidae	-
	C118	Cerambycidae	-
	C119	Staphylinidae	-
	C120	Staphylinidae	-
	C121	Cerambycidae	-
	C122	Anthicidae	-
	C123	Scirtidae	-
	C124	Eucnemidae	-
	C125	Cerambycidae	-
	C126	Elateridae	-
	C127	Mordellidae	-
C128	Scirtidae	-	
C129	Curculionidae	-	
C130	Elateridae	-	
C131	Scarabaeidae	-	
C132	Leiodiidae	-	

Order	M.S./Taxa code	Family	Genus/Species
Coleoptera	C133	Curculionidae	-
	C134	Curculionidae	-
	C135	Staphylinidae	-
	C136	Corticariidae	-
	C137	Scirtidae	-
	C138	Anthribidae	-
	C139	Cerambycidae	-
	C140	Lucanidae	-
	C141	Carabidae	-
	C142	Histeridae	-
	C143	Carabidae	-
	C144	Staphylinidae	-
	C145	Carabidae	<i>Cicindela sp.</i>
	C146	Curculionidae	-
	C147	Nitidulidae	-
	C148	Staphylinidae	-
	C149	Curculionidae	-
	C150	Staphylinidae	<i>Pselaphinae sp.</i>
	C151	Scarabaeidae	-
	C152	Carabidae	<i>Cicindela sp.</i>
C153	Ptilidae	-	
C154	Pselaphidae	-	
C155	Carabidae	-	
C156	Staphylinidae	<i>Pselaphinae sp.</i>	
C157	Carabidae	-	
C158	Staphylinidae	-	
C159	Clambidae	-	
C160	Leiodiidae	-	
Diptera	D1	Chloropidae	-
	D2	Dolichopodidae	<i>Chrysotimus sp.</i>
	D3	Tachinidae	<i>Perrissina sp.</i>
	D3*	Ephydriidae	-
	D4	Ephydriidae	<i>Hydrellia tritici</i>
	D4*	Tachinidae	-
	D5	Chironomidae	-
	D6	Ceratopogonidae	-
	D7	Cecidomyiidae	-
	D8	Sciaridae	-
	D8*	Ceratopogonidae	-
	D9	Phoridae	-
	D10	Sarcophagidae	-
	D11	Sarcophagidae	-
D12	Sciaridae	-	
D13	Simuliidae	-	
D14	Agromyzidae	<i>Cerodontha angustipennis</i>	

Order	M.S./Taxa code	Family	Genus/Species
Diptera	D15	Ephydriidae	-
	D16	Tipulidae	-
	D17	Mycetophilidae	-
	D18	Dolichopodidae	<i>Chrysotimus sp.</i>
	D19	Psychodidae	-
	D20	Culicidae	-
	D21	Ceratopogonidae	-
	D22	Dolichopodidae	-
	D23	Tipulidae	-
	D24	Tachinidae	-
	D25	Tipulidae	-
	D26	Dolichopodidae	-
	D27	Sepsidae	-
	D28	Chironomidae	-
	D29	Mycetophilidae	-
	D30	Empididae	<i>Phyllodromia sp.</i>
	D31	Tachinidae	<i>Plagiomyia turbida</i>
	D32	Tipulidae	-
	D33	Mycetophilidae	-
	D34	Phoridae	-
	D35	Tipulidae	-
	D36	Sciaridae	-
	D37	Empididae	-
	D38	Phoridae	-
	D39	Tipulidae	-
	D40	Asilidae	-
	D41	Tanyderidae	-
	D42	Mycetophilidae	-
	D43	Sphaeroceridae	<i>Phthitia sp.</i>
	D44	Tachinidae	-
	D45	Empididae	-
D46	Sarcophagidae	-	
D47	Phoridae	-	
D48	Chironomidae	-	
D49	Sciaridae	-	
D50	Ceratopogonidae	-	
D51	Ephydriidae	-	
D52	Dolichopodidae	-	
D53	Tachinidae	-	
D54	Dolichopodidae	-	
D55	Sarcophagidae	-	
D56	Mycetophilidae	-	
D57	Tachinidae	-	
D58	Mycetophilidae	-	
D59	Tachinidae	-	

Order	M.S./Taxa code	Family	Genus/Species
Diptera	D60	Drosophilidae	-
	D61	Chironomidae	-
	D62	Chloropidae	-
	D63	Ephydriidae	<i>Hydrellia enderbii</i>
	D64	Phoridae	-
	D65	Syrphidae	<i>Allograpta sp.</i>
	D66	Syrphidae	<i>Allograpta sp.</i>
	D67	Empididae	<i>Empidadelphina sp.</i>
	D68	Empididae	<i>Clinorhampha sp.</i>
	D69	Ephydriidae	<i>Psilopa metallica</i>
	D70	Syrphidae	<i>Allograpta sp.</i>
	D71	Stratiomyidae	<i>Australoberis sp.</i>
	D72	Stratiomyidae	<i>Australoberis sp.</i>
	D73	Bibionidae	<i>Dilophus nigrostigmus</i> (male)
	D74	Bibionidae	<i>Dilophus nigrostigmus</i> (female)
	D75	Agromyzidae	<i>Cerodontha sp.</i>
	D76	Bibionidae	<i>Dilophus tuthilli</i>
	D77	Phoridae	-
	D78	Sphaeroceridae	-
	D79	Simuliidae	-
	D80	Tachinidae	-
	D81	Tipulidae	-
	D82	Calliphoridae	<i>Calliphora quadrimaculata</i>
	D83	Sciaridae	-
	D84	Tachinidae	-
	D85	Tipulidae	-
	D86	Stratiomyidae	-
	D87	Agromyzidae	-
	D88	Ceratopogonidae	-
	D89	Tachinidae	-
	D90	Sciaridae	-
	D91	Sphaeroceridae	-
	D92	Mycetophilidae	-
	D93	Mycetophilidae	-
	D94	Chloropidae	-
	D95	Syrphidae	-
D96	Drosophilidae	-	
D97	Tachinidae	-	
D98	Faniidae	-	
D99	Tanyderidae	-	
D100	Tipulidae	-	
D101	Phoridae	-	
D102	Tipulidae	-	

Order	M.S./Taxa code	Family	Genus/Species
	D103	Sarcophagidae	-
	D104	Ceratopogonidae	-
	D105	Ceratopogonidae	-
	D106	Tipulidae	-
	D107	Dixidae	-
	D108	Conopidae	-
	D109	Asilidae	-
	D110	Tachinidae	-
	D111	Lonchopteridae	-
	D112	Calliphoridae	-
	D113	Tabanidae	-
	D114	Tabanidae	-
	D115	Empididae	-
	D116	Tipulidae	-
	D117	Ceratopogonidae	-
	D118	Mycetophilidae	-
	D119	Empididae	-
	D120	Empididae	-
	D121	Sphaeroceridae	-
	D122	Dolichopodidae	-
	D123	Drosophilidae	-
	D124	Heleomyzidae	-
	D125	Sciaridae	-
Hymenoptera	H1	Aphelinidae	-
	H2	Pteromalidae	-
	H3	Aphelinidae	-
	H4	Trichogrammatidae	-
	H5	Platygasteridae	-
	H6	Perilampidae	-
	H7	Cynipidae	-
	H8	Aphelinidae	-
	H9	Bethylidae	-
	H10	Megaspilidae	-
	H11	Mymaridae	-
	H12	Scelionidae	-
	H13	Diapriidae	-
	H14	Aphelinidae	-
	H15	Scelionidae	-
	H16	Eulophidae	-
	H17	Diapriidae	-
	H18	Diapriidae	-
	H19	Monomachidae	-
	H20	Colletidae	-
	H21	Colletidae	-
	H22	Apidae	<i>Apis mellifera</i>

Order	M.S./Taxa code	Family	Genus/Species
Hymenoptera	H23	Apidae	<i>Bombus terrestris</i>
	H24	Vespidae	
	H25	*Lumped with H22*	<i>Apis mellifera var.</i>
	H26	Formicidae	-
	H27	Pompilidae	-
	H28	Ichneumonidae	-
	H29	Scelionidae	-
	H30	Ichneumonidae	-
	H31	Aphelinidae	-
	H32	Pompilidae	-
	H33	Scelionidae	-
	H34	Tenthredinidae	-
	H35	Ichneumonidae	-
	H36	Ichneumonidae	-
	H37	Diapriidae	-
	H38	Scelionidae	-
	H39	Eulophidae	-
	H40	Eulophidae	-
	H41	Eulophidae	-
	H42	Formicidae	-
	H43	Braconidae	-
	H44	Aphelinidae	-
	H45	Mymaridae	-
	H46	Ichneumonidae	-
	H47	Scelionidae	-
	H48	Ichneumonidae	-
	H49	Pompilidae	-
	H50	Scelionidae	-
	H51	Bethylidae	-
	H52	Scelionidae	-
	H53	Mymaridae	-
	H54	*Lumped with H22*	<i>Apis mellifera var.</i>
	H55	Scelionidae	-
	H56	*Lumped with H22*	<i>Apis mellifera var.</i>
	H57	Bethylidae	-
	H58	Braconidae	-
	H59	Pteromalidae	-
	H60	Eulophidae	-
	H61	Scelionidae	-
	H62	Diapriidae	-
H63	Scelionidae	-	
H64	Braconidae	-	
H65	Halictidae	-	
H66	Scelionidae	-	
H67	Scelionidae	-	

Order	M.S./Taxa code	Family	Genus/Species
Hymenoptera	H68	Ichneumonidae	-
	H69	Colletidae	-
	H70	Braconidae	-
	H71	Formicidae	-
	H72	Scelionidae	-
	H73	Ichneumonidae	-
	H74	Braconidae	-
	H75	Diapriidae	-
	H76	Eulophidae	-
	H77	Scelionidae	-
	H78	Vespidae	-
	H79	Aphelinidae	-
	H80	Ichneumonidae	-
	H81	Ichneumonidae	-
	H82	Scelionidae	-
	H83	Bethylidae	-
	H84	Formicidae	-
	H85	Mymaridae	-
	H86	Braconidae	-
	H87	Scelionidae	-
	H88	Eulophidae	-
	H89	Formicidae	-
	H90	Pompilidae	-
	H91	Ichneumonidae	-
	H92	Braconidae	-
	H93	Scelionidae	-
	H94	Ichneumonidae	-
	H95	Gasteruptiidae	<i>Pseudofoenus sp.</i>
	H96	Colletidae	<i>Hylaeus capitosus</i>
	H97	Halictidae	<i>Lasioglossum sordidum</i>
	H98	Pompilidae	-
	H99	Ichneumonidae	-
	H100	Ichneumonidae	-
	H101	Ichneumonidae	-
	H102	Ichneumonidae	-
	H103	Ichneumonidae	-
H104	Aphelinidae	-	
H105	Halictidae	-	
H106	Diapriidae	-	
H107	Scelionidae	-	
H108	Scelionidae	-	
H109	Formicidae	-	
H110	Formicidae	-	
H111	Pompilidae	-	
H112	Cynipidae	-	

Order	M.S./Taxa code	Family	Genus/Species
Hymenoptera	H113	Diapriidae	-
	H114	Braconidae	-
	H115	Mymaridae	-
	H116	Mymaridae	-
	H117	Scelionidae	-
	H118	Scelionidae	-
	H119	Braconidae	-
	H120	Eupelmidae	-
	H121	Cynipidae	-
	H122	Aphelinidae	-
	H123	Aphelinidae	-
	H124	Eupelmidae	-
	H125	Cynipidae	-
	H126	Platygasteridae	-
	H127	Platygasteridae	-
	H128	Eulophidae	-
	H129	Eulophidae	-
H130	Mymaridae	-	
H131	Diapriidae	-	
Amphipoda	Amp		
Annelida	Ann		
Araneida	Ara		
Blattodea	Blat		
Chilopoda	Chi		
Diplopoda	Dip		
Gastropoda	Gas		
Hemiptera	Acanth	Acanthosomatidae	
	Anth	Anthocoridae	
	Aph	Aphidae	
	Cer	Cercopidae	
	Cic	Cicadidae	
	Cica	Cicadellidae	
	Cocc	Male Coccoidea	
	Cor	Coreidae	
	Eni	Enicocelaphidae	
	Flat	Flatidae	
	Lyg	Lygaeidae	
	Mir	Miridae	
	Nab	Nabidae	
	Pent	Pentatomidae	
	Psyll	Psyllidae	
Hemiptera	Red	Reduviidae	
Isoptera	Iso		
Lepidoptera	Lep/Cram	Crambidae	
	Lep/Geo	Geometridae	

Order	M.S./Taxa code	Family	Genus/Species
Lepidoptera	Lep/Hep	Hepialidae	
	Lep/Lyc	Lycaenidae	
	Lep/Noc	Noctuidae	
	Lep/Oec	Oecophoridae	
	Lep/Pyr	Pyralidae	
	Lep/Tin	Tineoidea (Super- family)	
	Lep/Tor	Tortricidae	
	Lep/Ypo	Yponomeutidae	
Mantodea	Mant		
Megaloptera	Mega		
Neuroptera	Neur		
Odonata	Odo		
Opiliones	Opi		
Orthoptera	Orth/Acrid	Acrididae	
	Orth/Anost	Anostostomatidae	
	Orth/Gryl	Gryllidae	
	Orth/Rhap	Rhaphidophoridae	
Pseudoscorpionida	Pseudo		
Psocoptera	Pso		
Trichoptera	Tri		
Tricladida	Platy		