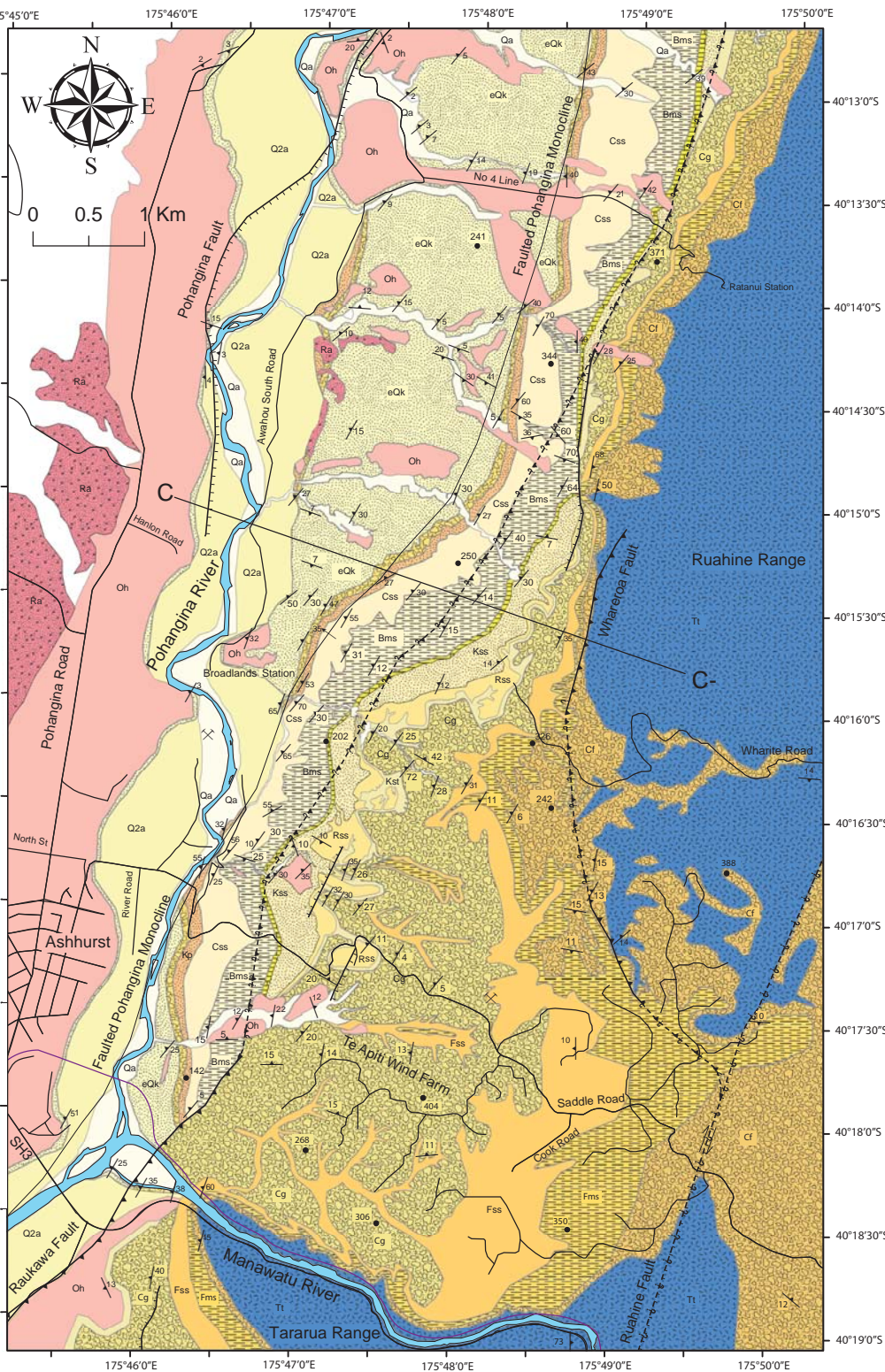


Geology of the Lower Pohangina Valley, Manawatu, New Zealand



Acknowledgements
Map compiled by Callum Rees from field surveys, aerial photographs and satellite imagery, supplemented by maps by Rich, (1959). GIS assistance was provided by Matt Irwin.



LEGEND						
Symbol	Member	Formation	Zone	Stage	Series	Epoch
Qa	Alluvium					Holocene
Qa2	Degradational Terraces	Recent	Not applicable	Haweran		
Oh	Ohakean Terrace	Ohakean				
Ra	Ratan Terrace	Ratan				
Unconformity						
eOk	Sandstone Member	Kai Iwi Group	Not applicable	Castleciffian		Pleistocene
	Red conglomerate Member					
Kp	Kaimatira Pumice Sand Formation					
Css	Crossbedded sandstone Member	Takapari Formation				
Bms	Blue grey sandy mudstone Member					
Cg	Coquina limestone Member	Konewa Formation	<i>Struthiolaria (Pellicaria) convexa</i>	Nukumarian		
Kss	Marine sandstone Member					
Rss	Red cross bedded sandstone Member					
Kat	Sandy blue grey mudstone Member	Komako Formation	<i>Chlamys (Phalopecten) triphooki</i>	Mangapanian		Pliocene
Fas	Conglomerate Member					
Fms	Fossiliferous sandstone Member					
Fms	Fossiliferous mudstone Member					
Fgs	Flaggy grit Member					
Unconformity						
Tt	Greywacke	Torlesse Supergroup				Jurassic

GEOLOGICAL SYMBOLS

- Transform fault
- Dip and dip direction
- Inferred normal fault (ticks on downthrown side)
- Inferred reverse fault (teeth on overthrust side)
- Normal fault (ticks on downthrown side)
- Reverse fault (teeth on overthrust side)
- Monocline

TOPOGRAPHICAL REFERENCE

- Elevation in metres
- Quarry
- Railway
- Roads
- River

Drawn on Transverse Mercator Projection
Origin of projection: 175°45'0"E Long, 40°13'0"S Lat. Grid line labels are in terms of the WGS84 Datum. Base compiled from data supplied by Land Information New Zealand

Bibliographic Reference:
Rees, C. (2015) The Geology of the Lower Pohangina Valley, New Zealand. Unpublished PhD. thesis, lodged in the Library, Massey University, Palmerston North.

