

Copyright is owned by the Author of the thesis. Permission is given for a copy to be downloaded by an individual for the purpose of research and private study only. The thesis may not be reproduced elsewhere without the permission of the Author.

**JULIUS HAAST**

**the Canterbury Museum**

**and Māori**

**A thesis presented in partial fulfilment of the**

**requirements for the degree of**

**Master of Arts**

**in**

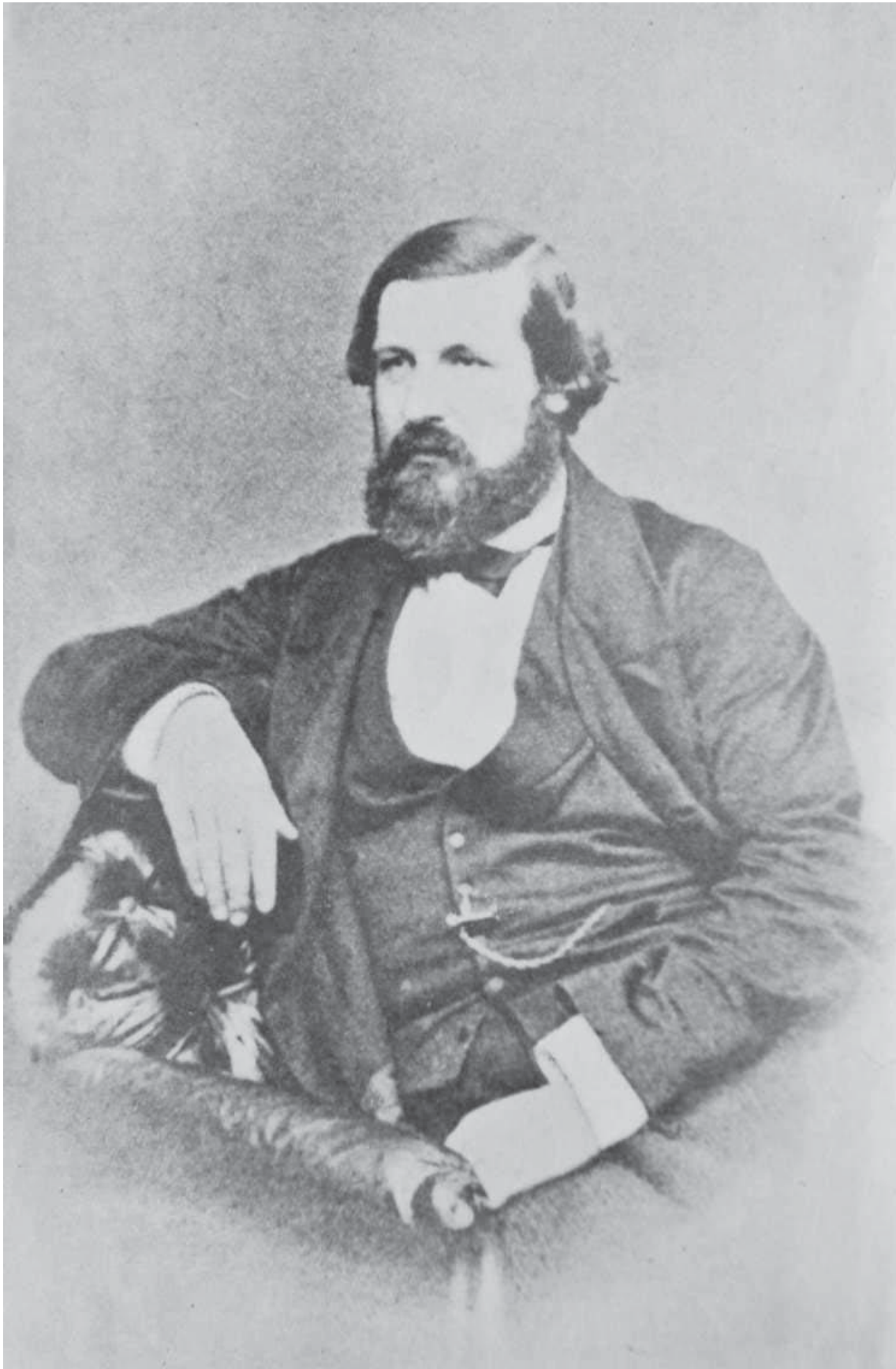
**Māori Studies**

**At Massey University, Palmerston North**

**New Zealand**

**Elaine Marguerite Cooper**

**August 2011**



**Julius Haast (frontispiece, von Haast, 1948).**

## **ABSTRACT**

The thesis explores Haast's attitudes towards Māori through his activities as Director of the Canterbury Museum. This is achieved by examining his archaeology, his treatment of Māori human remains, his displays of Māori culture, and his historical theories concerning Māori. These questions will be addressed through four case studies drawn from Haast's work as curator. The first involves Haast's archaeological excavations and theories. The second study concerns the acquisition and display of Māori human remains, particularly those from Moa-bone Point Cave near Sumner in Christchurch. The third study concerns Haast's displays of Māori culture through the museum's collections and especially the Māori House Haast acquired for the Canterbury Museum. The final study looks at the display Haast curated as supervisor for the New Zealand Court at the Colinderies Exhibition in London. From these studies, general conclusions concerning Haast's relationships with and attitudes toward Māori are drawn.

## ACKNOWLEDGEMENTS

I wish firstly to express my thanks to my late husband, Steve, for all his help and encouragement and his determination that I should gain this degree. I want to thank my Course Controller, Margaret Forster of the Department of Māori Studies, Massey University, for her guidance. Special thanks go to my Supervisor, Associate Professor Harry Allen of the Anthropology Department, University of Auckland, for his patience and assistance.

I also want to thank all my family and friends for listening and their suggestions with a special mention to Ellyne and Derek Challis for help at a difficult time. I appreciated help from Vic and Carol Cooper, Naomi Gilmore, Dr. Rod Clough and Sarah Macready for their helpful advice. Jane Clarke, John Welch and Graham Gubb gave important help with the computer. I thank the Staff at the Student Learning Centre at Albany who provided necessary information and also many librarians for the patience and understanding.

I send a special thanks to my late sister Marie Smith and my nieces in England, Professor Sarah Gurr and Dr. Debbie Pope, for help and encouragement.

## TABLE OF CONTENTS

ABSTRACT .....	iii
ACKNOWLEDGEMENTS .....	iv
TABLE OF CONTENTS .....	v
GLOSSARY .....	vii
Chapter 1 – Introduction .....	1
1.1 The Purpose of the Thesis.....	1
1.2 Methodology .....	2
1.3 Literature Review .....	4
1.4 Ngāi Tahu and the Settlement of Canterbury .....	8
1.5 Changing Attitudes.....	13
1.6 Organisation of the Thesis .....	15
1.7 Summary.....	17
Chapter 2 – Haast and the Canterbury Museum.....	18
2.1 Introduction: The Early Life of Julius Haast .....	18
2.2 The Philosophical Institute .....	31
2.3 Establishing the Canterbury Museum .....	33
2.4 The Glenmark Swamp .....	41
2.5 Controversy over Opening the Museum on Sunday .....	43
2.6 Summary.....	44
Chapter 3 – Maori as subjects of study .....	45
3.1 Introduction.....	45
3.2 Haast’s Excavations .....	45
3.3 Moa-bone Point Cave .....	48
3.4 McKay and the Moa-bone Point Cave Controversy .....	50

3.5 Human remains at Moa-bone Point Cave.....	59
3.6 Other Crania in the Museum Collections .....	61
3.7 Preserved Heads at the Canterbury Museum.....	65
3.8 Discussion.....	68
3.9 Summary.....	72
Chapter 4 – Hau-te-ana-nui-o-Tangaroa: The Māori House at Canterbury Museum.....	73
4.1 Introduction.....	73
4.2 The Māori House.....	74
4.3 Other houses in Museum Collections, Te Hau-ki-Tūranga, Hotunui and Mataatua...	82
4.4 Display.....	86
4.5 Summary.....	87
Chapter 5 – Exhibitions and the Colinderes Exhibition, 1886 .....	90
5.1 Exhibitions.....	90
5.2 The Colinderes Exhibition 1885-1887 .....	97
5.3 Summary.....	104
Chapter 6 – Conclusions .....	105
OBITUARY .....	111
REFERENCES .....	114
POSTSCRIPT: Julius Haast and the Ngāi Tahu Treaty.....	113
<b>LIST OF ILLUSTRATIONS</b>	
JULIUS HAAST (FRONTISPIECE, VON HAAST, 1948). .....	II
ILLUSTRATION 2.1 - MARY DOBSON (VON HAAST, 1948, OPPOSITE PAGE 624). .....	32
ILLUSTRATION 2.2 - INTERIOR OF CANTERBURY MUSEUM (COURTESY OF THE CANTERBURY MUSEUM). .....	39
ILLUSTRATION 3.1 - ALEXANDER MCKAY (BISHOP, G., 2008, P. 186).....	51
ILLUSTRATION 3.2 - SITE PLAN AT MOA-BONE POINT CAVE SHOWING MAORI BURIAL. <i>TRANSACTIONS OF THE NEW ZEALAND INSTITUTE</i> , VOL. VII, PLATE 1, P. 58. ....	53
ILLUSTRATION 3.3 - DRAWING OF THE BURIAL AT MOA-BONE POINT CAVE (BISHOP, 2008, P. 109).....	59
ILLUSTRATION 4.1 - INTERIOR OF THE MĀORI HOUSE, CANTERBURY MUSEUM.....	79
ILLUSTRATION 5.1 - NEW ZEALAND COURT AT THE PHILADELPHIA INTERNATIONAL EXHIBITION, 1876 (MCCARTHY, 2007, P. 35). .....	94
ILLUSTRATION 5.2 - TE TĀKINGA AT THE COLINDERES EXHIBITION, LONDON, 1886 (MCCARTHY, 2007, P. 43). .....	100

## GLOSSARY

Glossary of Māori terms used in this thesis are mainly derived from *A Dictionary of the Māori*

*Language* by H.W. Williams (1988).

haka – war dance  
 hapū – sub tribe  
 iwi – a tribe  
 kāinga – village  
 kete – flax basket  
 kōiwi – human remains  
 mahinga kai – food source  
 maihi – carved boards at the front of a whare  
 mana – power, prestige, authority, control  
 marae – courtyard in front of a meeting house  
 mauri – life principle of a person  
 moko – tattoo of the face and body  
 mokomokai – dried human head usually tattooed  
 Pākehā – a person of European descent  
 pātaka – storehouse raised on posts  
 pāua – Haliotis shell  
 pounamu – greenstone, nephrite  
 poupou – carved wall post of a house  
 poutokomanawa – central post inside a house  
 rākau whakapapa – genealogy staff  
 rangatira – chief  
 taiaha – fighting staff  
 tangihanga – death mourning ritual on a marae  
 taonga – highly prized object  
 tapu – under religious or superstitious restriction  
 tekoteko – carved figure on the gable of a house  
 Te Reo Māori – the Māori language  
 Te Wai Pounamu – the South Island of New Zealand  
 tikanga – a rule, plan or custom  
 toetoe – grass or sedge  
 tohunga – skilled person  
 tohunga whakairo – master carver  
 tukutuku – woven panels between the poupou in a house  
 wahi tapu – a sacred place of safe keeping  
 waiata – song  
 whakapapa – genealogy  
 whare – house  
 wharekura – school  
 whareniui – large house or meeting house