

QUATERNARY PHREATOMAGMATIC VOLCANOES OF SOUTHERN TENERIFE, SPAIN: MONTANA PELADA TUFF RING AND CALDERA DEL REY MAAR

Martin, U. & Németh, K. (2004) Quaternary phreatomagmatic volcanoes of southern Tenerife, Spain: Montana Pelada tuff ring and Caldera del Rey Maar. In: Németh, K., Matrin, U., Goth, K., & Lexa, J. (Eds) *Abstract Volume of the Second International Maar Conference 21 - 26. September 2004*, Lajosmizse/Kecskemét, Hungary, *Occasional Papers of the Geological Institute of Hungary* 203: p. 74.

MARTIN, U.¹ AND NEMETH, K.^{2,3}

¹Heidelberg, Germany

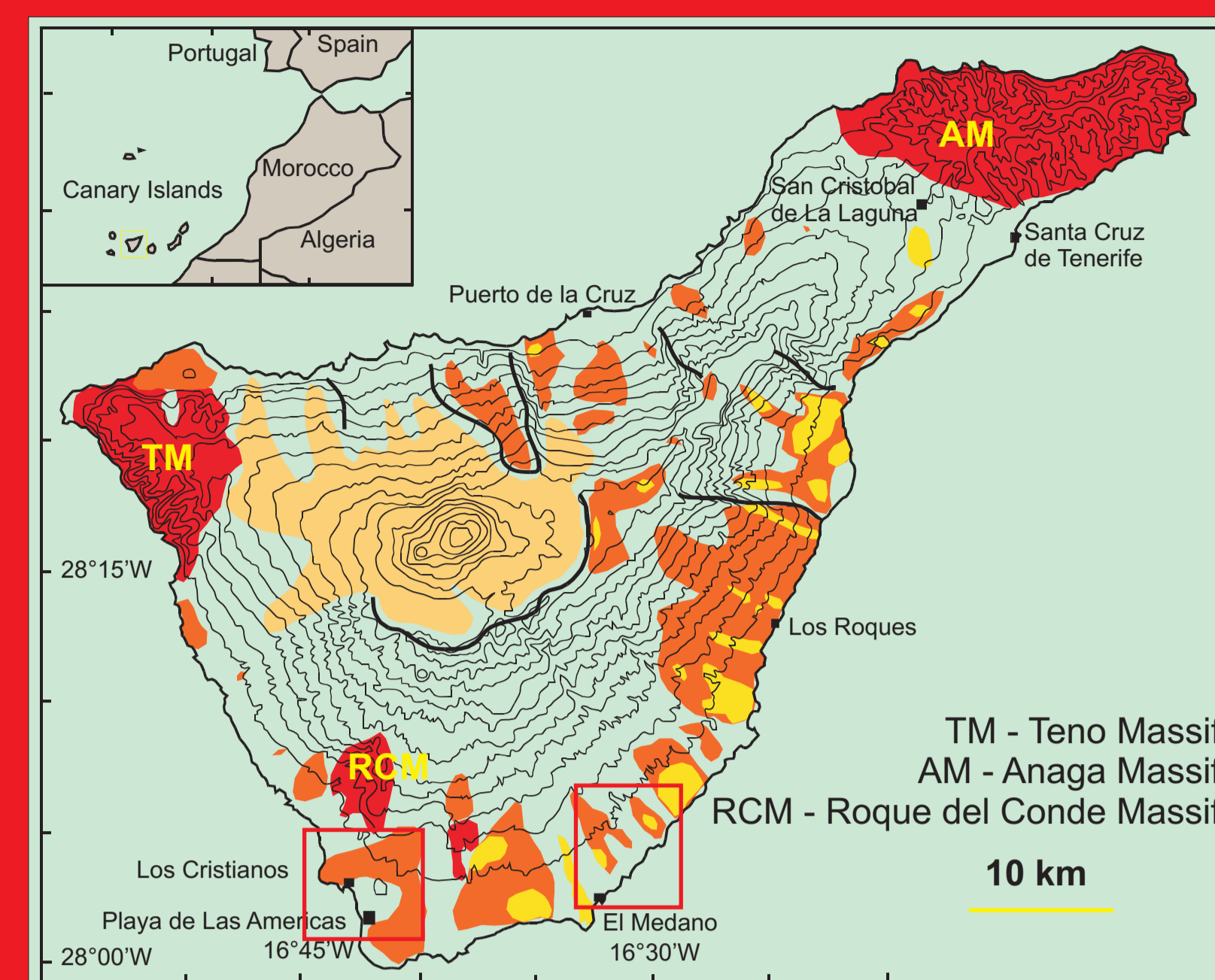
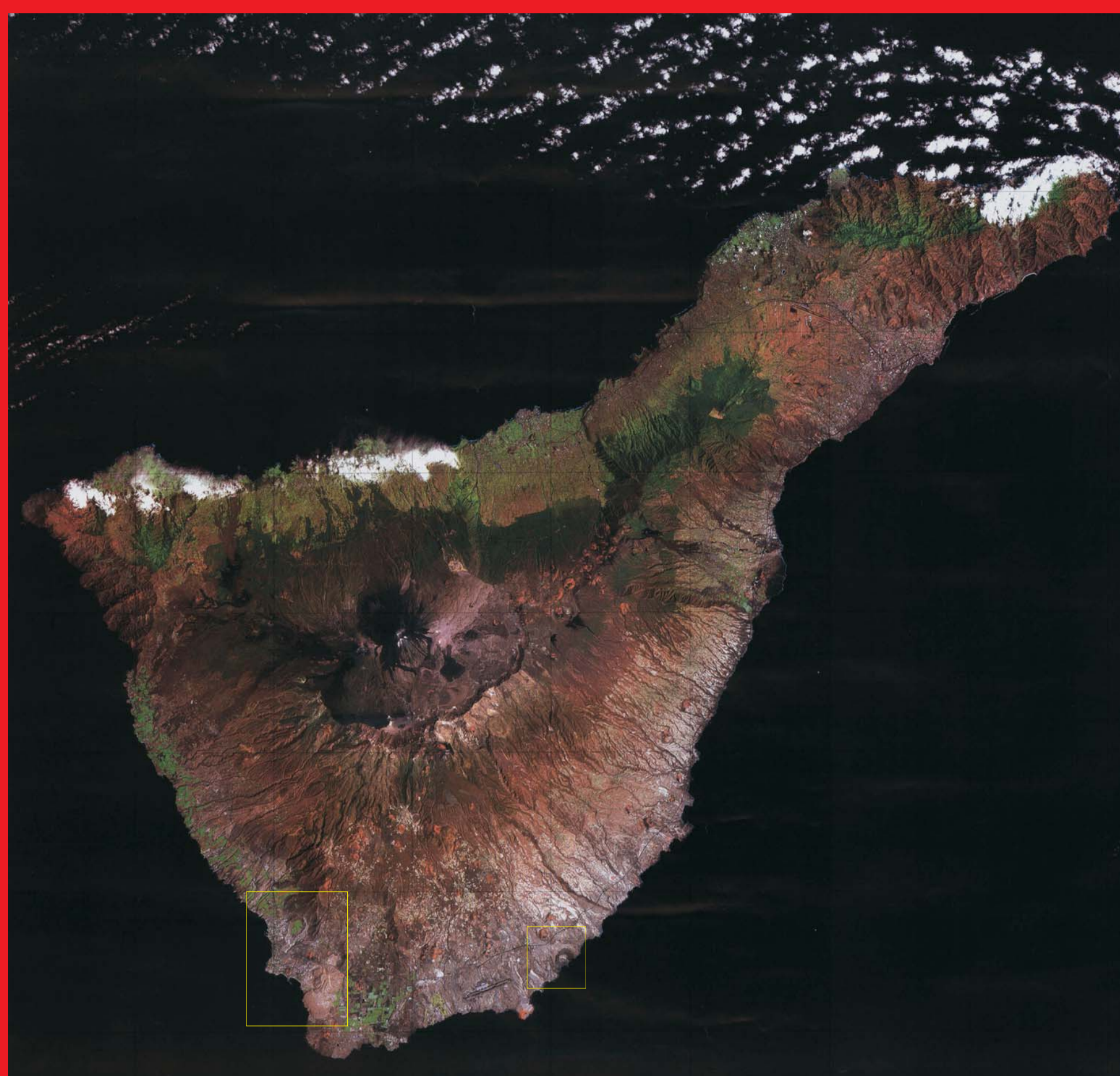
²Geological Institute of Hungary, 14 Stefánia út, Budapest, Hungary

³Eötvös University, Department of Regional Geology, 14 Stefánia út, Budapest, Hungary

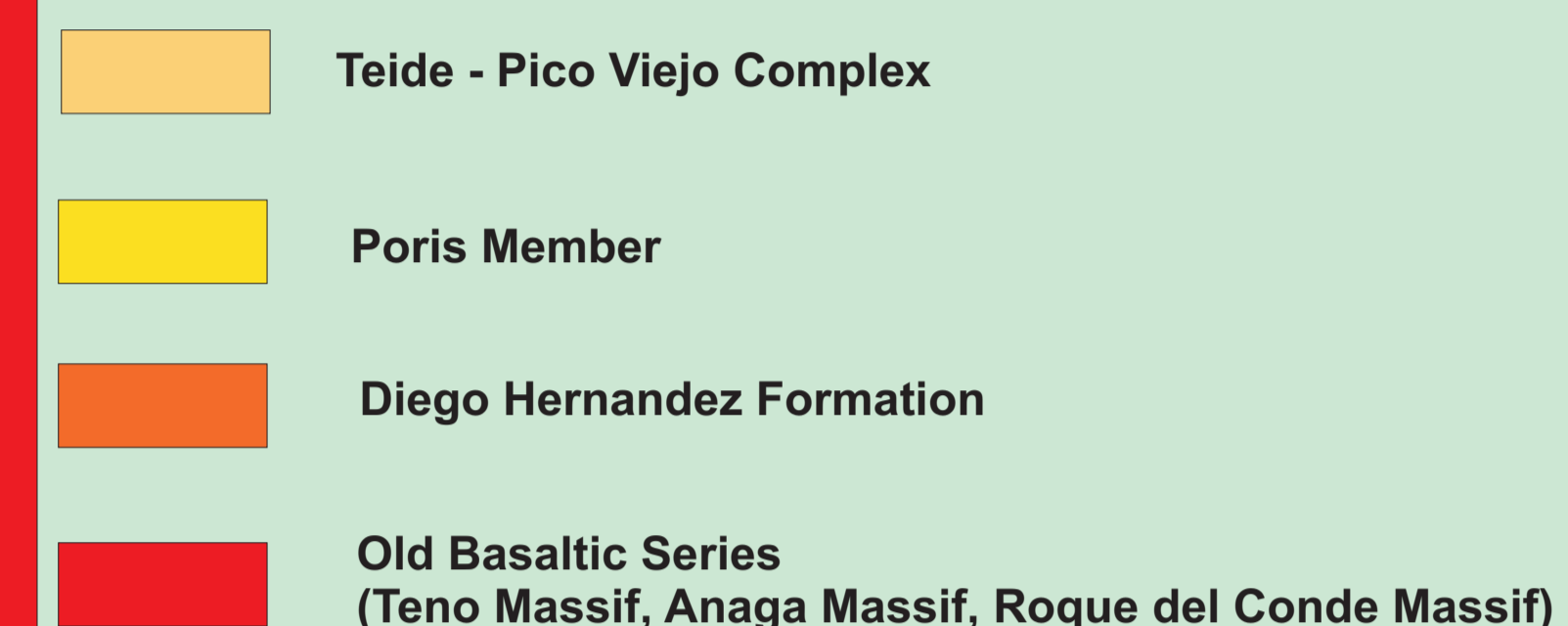
Abstract

Quaternary monogenetic volcanoes in southern Tenerife are part of a rift zone extending from the Pico del Teide to the south. In this rift zone scoria cones are often clustered into smaller volcanic massifs from an extensive volcanic field. In the southern margin of this rift zone, near the Atlantic shoreline 2 phreatomagmatic volcanoes are known. Montaña Pelada is a tuff ring 1.2 km across and stands about 100 m above the sea level. The pyroclastic succession of the tuff ring is very monotonous and consists of accidental lithic rich bedded lapilli tuff. The pyroclastic rocks in the base are richer in accidental lithic fragments derived from pre-tuff ring lava than in the upper section. A gradual transition to a more bedded texture of the pyroclastic units is prominent. In the upper section of the unit dm thick beds rich in cauliflower bombs and scoriaceous lapilli indicate that the vent of the volcano has been cleared by this time of the eruption. The crater of the Montaña Pelada is filled with massive lapilli tuff forming m-thick units that are inferred to be intra-crater lahars. Above the reworked pyroclastic units immature soil horizon indicates terrestrial conditions in the tuff ring crater. Within the tuff ring two pyroclastic flow units are preserved indicating their high momentum to allow the ignimbrite to overrun the tuff ring and destroy a small scoria cone that occupied the tuff ring crater.

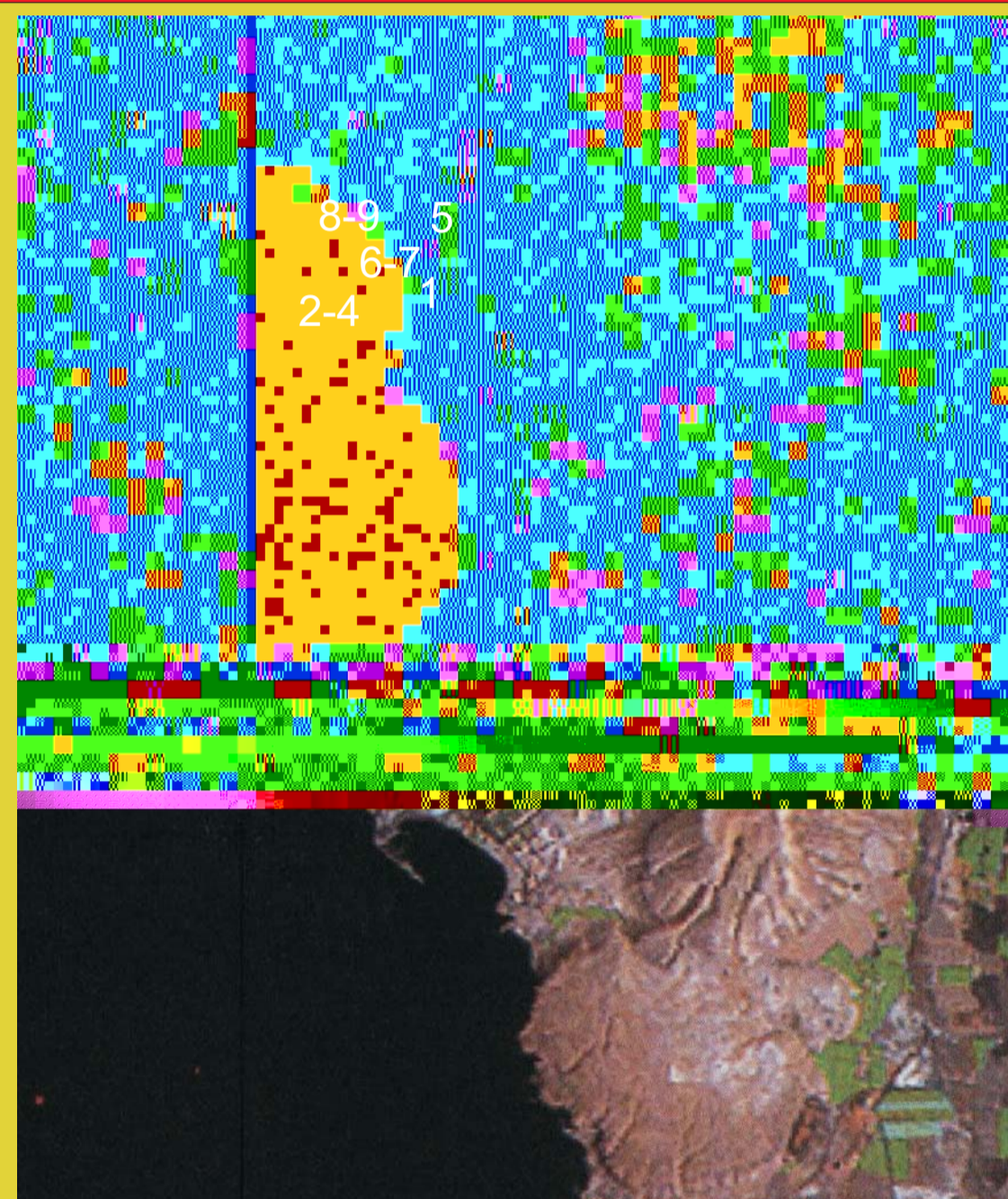
Just 15 km to the west a large maar, Caldera del Rey forms a ~ 150 m deep, rift parallel elongated double depression. The pyroclastic succession of the maar is about 70 m thick in the crater rim. In near-vent position thickly bedded, accidental lithic rich lapilli tuff units are inferred to have been deposited from high concentration laminar flows e.g. pyroclastic flows. These units are mantled by thin base surges. In these units, impact sags are rare. In the upper section of the tuff ring deposits an increased number of impact sags, dune-bedded base surge deposits and slumping structures indicating gradual change of the eruption mechanism of the maar. About 800 metres away from the crater rim, behind



Geological data after Edgar et al. (2002), JVGR 118, 99-130



Caldera del Rey Maar



Detail from a satellite image of Tenerife shows the double maar crater of Caldera del Rey. Note the scoria cone and its lava flow in the southwest and the depression north of the cone, another good candidate for a maar volcano in Tenerife



Maar crater of the Caldera del Rey from the west. In the background the Roque del Conde Massif (RCD) blocks are visible.

1 Undulating bedded base surge succession about 400 metres from the crater rim of Caldera del Rey.

2 Impact sag caused by a phonolitic cauliflower bomb (arrow) in a coarse grained lapilli tuff unit deposited from high concentration base surge clouds

3 Soft sediment slumping and deformation textures in near vent phreatomagmatic pyroclastic units about 400 metres from the crater rim. Vesiculated tuffs are common in this distance from the crater rim.

4 Accretionary lapilli-rich bedded tuff in an eruption cloud shadow behind an older basaltic lava flow ridge, about 700 m from the maar rim.

5 Unconformity surface (dashed line) of the crater rim. Note the persistent steep bedding and continuous bedded (lines) but massive character of the pyroclastic units

6 Massive lapilli tuff succession in near vent (200 m from rim) position deposited from high concentration pyroclastic surges and/or pyroclastic flows.

7 Antidune and dune bedded, cross bedded, accretionary lapilli-rich base surge succession about 1000 m from the crater rim

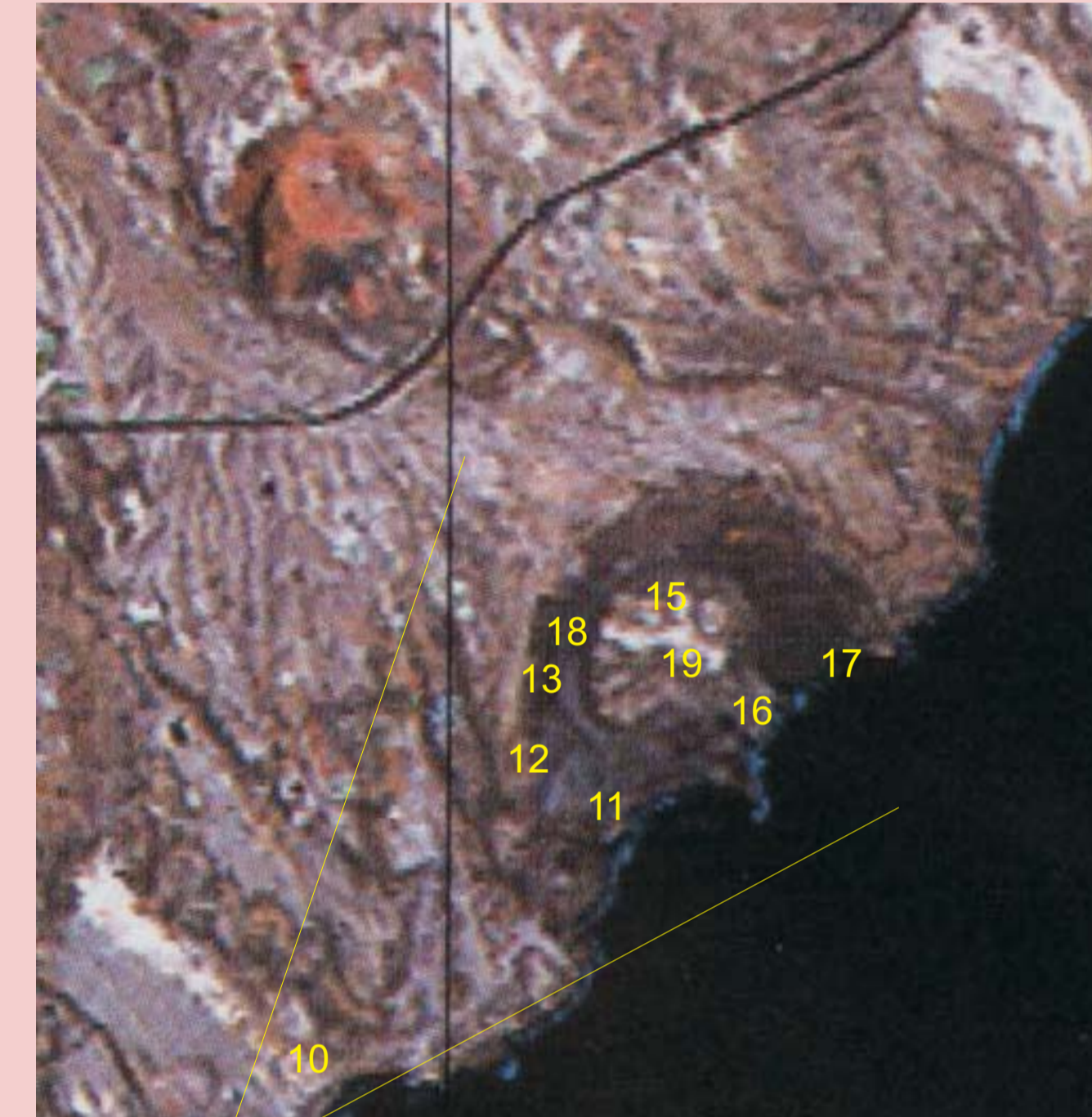
8 Rim-type accretionary lapilli (arrows) beds about 700 metres from the crater rim in current shadows

9

Montana Pelada tuff ring



Montana Pelada tuff ring



10 Monotonous coarse-fine lapilli tuff succession of Montana Pelada.

11 Volcanic accidental lithic clast-rich lapilli tuff is the main facies of the pyroclastic succession of Montana Pelada

12 Softly deformed impact crater (arrow) in the Montana Pelada succession indicating water saturated sediments upon deposition.

13 Rounded volcanic accidental lithic (VI) derived from the pre-tuff ring lava flows and associated fluvial systems.

14 Ignimbrite units of the Poris Member in the tuff ring crater indicating the destructive power of the Tenerife ignimbrites (Ig) so far from their source.

15 Intra-crater volcaniclastic debris and mud flow units suggesting post-volcanic remobilisation of tephra into the crater.

16 Unconformity (dashed line) of tuff ring (Tr) and intra-crater debris flow (Df) units in the crater rim of the Montana Pelada southeastern section.

17 Mud cracks on a base surge bedding plane in the top section of the tuff ring.

18 Thick paleosol (Ps) separates the intra-crater debris flow (Df) deposits and the crater filling ignimbrites (Ig1).

19

Distal pyroclastic facies



Approximately 1000 metres away from the maar crater centre typical distal pyroclastic phreatomagmatic deposits cover the surroundings of the Caldera del Rey maar. The pyroclastic units are rich in high energy bedforms indicating that the pyroclastic surges derived from the maar were dilute but still had significant momentum. Such deposits are especially common in the outcrops in the township of Playa de Las Americas and still traceable in the Atlantic shoreline suggesting a potential volcanic hazard in case of a recurrence of such volcanoes in the vicinity of the town.

