



A Genetic Locus within the *FMN1*/*GREM1* Gene Region Interacts with Body Mass Index in Colorectal Cancer Risk

Elom K. Aglago¹, Andre Kim², Yi Lin³, Conghui Qu³, Marina Evangelou¹, Yu Ren¹, John Morrison², Demetrius Albanes⁴, Volker Arndt⁵, Elizabeth L. Barry⁶, James W. Baurley^{7,8}, Sonja I. Berndt⁴, Stephanie A. Bien³, D. Timothy Bishop⁹, Emmanouil Bouras¹⁰, Hermann Brenner^{5,11,12}, Daniel D. Buchanan^{13,14,15}, Arif Budiarto^{7,16}, Robert Carreras-Torres^{17,18}, Graham Casey¹⁹, Tjeng Wawan Cenggoro⁷, Andrew T. Chan^{20,21,22,23,24,25}, Jenny Chang-Claude^{26,27}, Xuechen Chen^{5,28}, David V. Conti², Matthew Devall²⁹, Virginia Diez-Obrero^{17,30,31,32,33}, Niki Dimou³⁴, David Drew²², Jane C. Figueiredo^{2,35}, Steven Gallinger³⁶, Graham G. Giles^{37,38,39}, Stephen B. Gruber⁴⁰, Andrea Gsur⁴¹, Marc J. Gunter³⁴, Heather Hampel⁴⁰, Sophia Harlid⁴², Akihisa Hidaka³, Tabitha A. Harrison³, Michael Hoffmeister⁵, Jeroen R. Huyghe³, Mark A. Jenkins³⁸, Kristina Jordahl⁵, Amit D. Joshi^{22,24}, Eric S. Kawaguchi², Temitope O. Keku⁴³, Anshul Kundaje^{44,45}, Susanna C. Larsson⁴⁶, Loïc Le Marchand⁴⁷, Juan Pablo Lewinger², Li Li²⁹, Brigid M. Lynch^{37,48,49}, Bharuno Mahesworo⁷, Marko Mandic^{5,28}, Mireia Obón-Santacana^{17,30,31}, Victor Moreno^{17,30,31,50}, Neil Murphy³⁴, Hongmei Nan^{51,52}, Rami Nassir⁵³, Polly A. Newcomb^{3,54}, Shuji Ogino^{23,24,55,56}, Jennifer Ose^{57,58}, Rish K. Pai⁵⁹, Julie R. Palmer⁶⁰, Nikos Papadimitriou³⁴, Bens Pardamean⁷, Anita R. Peoples^{57,58}, Elizabeth A. Platz⁶¹, John D. Potter^{3,54,62}, Ross L. Prentice³, Gad Rennert^{63,64,65}, Edward Ruiz-Narvaez⁶⁶, Lori C. Sakoda^{3,67}, Peter C. Scacheri⁶⁸, Stephanie L. Schmit⁶⁹, Robert E. Schoen⁷⁰, Anna Shcherbina^{44,45}, Martha L. Slattery⁷¹, Mariana C. Stern², Yu-Ru Su³, Catherine M. Tangen⁷², Stephen N. Thibodeau⁷³, Duncan C. Thomas², Yu Tian^{26,74}, Cornelia M. Ulrich^{57,58}, Franzel JB van Duijnhoven⁷⁵, Bethany Van Gulpen^{42,76}, Kala Visvanathan⁶¹, Pavel Vodicka^{77,78,79}, Jun Wang², Emily White^{3,54}, Alicja Wolk⁴⁶, Michael O. Woods⁸⁰, Anna H. Wu², Natalia Zemlianskaia², Li Hsu^{3,81}, W. James Gauderman², Ulrike Peters^{3,54}, Konstantinos K. Tsilidis^{1,10}, and Peter T. Campbell⁸²

ABSTRACT

Colorectal cancer risk can be impacted by genetic, environmental, and lifestyle factors, including diet and obesity. Gene-environment interactions ($G \times E$) can provide biological insights into the effects of obesity on colorectal cancer risk. Here, we assessed potential genome-wide $G \times E$ interactions between body mass index (BMI) and common SNPs for colorectal cancer risk using data from 36,415 colorectal cancer cases and 48,451 controls from three international colorectal cancer consortia (CCFR, CORECT, and GECCO). The $G \times E$ tests included the conventional logistic regression using multiplicative terms (one degree of freedom, 1DF test), the two-step EDGE method, and the joint 3DF test, each of which is powerful for detecting $G \times E$ interactions under specific conditions. BMI was associated with higher colorectal cancer risk. The two-step approach revealed a statistically significant $G \times BMI$ interaction located within the Formin 1/Gremlin 1 (*FMN1*/*GREM1*) gene region (rs58349661). This

SNP was also identified by the 3DF test, with a suggestive statistical significance in the 1DF test. Among participants with the CC genotype of rs58349661, overweight and obesity categories were associated with higher colorectal cancer risk, whereas null associations were observed across BMI categories in those with the TT genotype. Using data from three large international consortia, this study discovered a locus in the *FMN1*/*GREM1* gene region that interacts with BMI on the association with colorectal cancer risk. Further studies should examine the potential mechanisms through which this locus modifies the etiologic link between obesity and colorectal cancer.

Significance: This gene-environment interaction analysis revealed a genetic locus in *FMN1*/*GREM1* that interacts with body mass index in colorectal cancer risk, suggesting potential implications for precision prevention strategies.

¹Department of Epidemiology and Biostatistics, Imperial College London, School of Public Health, London, United Kingdom. ²Department of Population and Public Health Sciences, Keck School of Medicine, University of Southern California, Los Angeles, California. ³Public Health Sciences Division, Fred Hutchinson Cancer Research Center, Seattle, Washington. ⁴Division of Cancer Epidemiology and Genetics, National Cancer Institute, National Institutes of Health, Bethesda, Maryland. ⁵Division of Clinical Epidemiology and Aging Research, German Cancer Research Center (DKFZ), Heidelberg, Germany. ⁶Department of Epidemiology, Geisel School of Medicine at Dartmouth, Hanover, New Hampshire. ⁷Bioinformatics and Data Science Research Center, Bina Nusantara University, Jakarta, Indonesia. ⁸BioRealm LLC, Walnut, California. ⁹Leeds Institute of Cancer and Pathology, University of Leeds, Leeds, United

Kingdom. ¹⁰Department of Hygiene and Epidemiology, University of Ioannina School of Medicine, Ioannina, Greece. ¹¹Division of Preventive Oncology, German Cancer Research Center (DKFZ) and National Center for Tumor Diseases (NCT), Heidelberg, Germany. ¹²German Cancer Consortium (DKTK), German Cancer Research Center (DKFZ), Heidelberg, Germany. ¹³Colorectal Oncogenomics Group, Department of Clinical Pathology, The University of Melbourne, Parkville, Victoria, Australia. ¹⁴University of Melbourne Centre for Cancer Research, Victorian Comprehensive Cancer Centre, Parkville, Victoria, Australia. ¹⁵Genomic Medicine and Family Cancer Clinic, The Royal Melbourne Hospital, Parkville, Victoria, Australia. ¹⁶Computer Science Department, School of Computer Science, Bina Nusantara University, Jakarta, Indonesia. ¹⁷ONCOBELL Program, Bellvitge Biomedical Research Institute (IDIBELL), L'Hospitalet de Llobregat,

Introduction

Colorectal cancer is a multifactorial disease that results from many genetic and behavioral/lifestyle risk factors, including diet and obesity (1, 2). General obesity, usually defined in adult populations as a body mass index (BMI) equal to or above 30 kg/m² has been consistently associated with higher risk of colorectal cancer and is estimated to account for 5% to 14% of all colorectal cancer diagnosed cases (3, 4). Mechanistically, obesity affects colorectal cancer carcinogenesis through different pathways, including adipose tissue-associated inflammation, oxidative stress, impairment of lipid metabolism, alterations of the microbiome, and through its causal association with comorbidities such as type 2 diabetes (5). Obesity is a worldwide health issue, mainly attributed to the ubiquitously expanded obesogenic

environment (6), with a worldwide prevalence that ranged from less than 5% in the 1970s to over 13% in 2016 (i.e., more than 650 million adults worldwide; ref. 7).

Understanding how inherited germline genetic variation can influence colorectal cancer risk according to obesity status is important for developing better disease risk assessment tools. In recent years, genome-wide association studies (GWAS) have identified over 200 genetic risk variants associated with colorectal cancer development (8–12). Overall, the genetic heritability of colorectal cancer is estimated to be up to 20% (13). Given the complexity of colorectal carcinogenesis, gene-environment interactions (G×E) may be particularly well suited for identifying novel susceptibility loci and biologically plausible interactions that could further elucidate

Barcelona, Spain.¹⁸Digestive Diseases and Microbiota Group, Girona Biomedical Research Institute (IDIBGI), Salt, Girona, Spain.¹⁹Center for Public Health Genomics, Department of Public Health Sciences, University of Virginia, Charlottesville, Virginia.²⁰Division of Gastroenterology, Massachusetts General Hospital and Harvard Medical School, Boston, Massachusetts.²¹Channing Division of Network Medicine, Brigham and Women's Hospital and Harvard Medical School, Boston, Massachusetts.²²Clinical and Translational Epidemiology Unit, Massachusetts General Hospital and Harvard Medical School, Boston, Massachusetts.²³Broad Institute of Harvard and MIT, Cambridge, Massachusetts.²⁴Department of Epidemiology, Harvard T.H. Chan School of Public Health, Harvard University, Boston, Massachusetts.²⁵Department of Immunology and Infectious Diseases, Harvard T.H. Chan School of Public Health, Harvard University, Boston, Massachusetts.²⁶Division of Cancer Epidemiology, German Cancer Research Center (DKFZ), Heidelberg, Germany.²⁷University Medical Centre Hamburg-Eppendorf, University Cancer Centre Hamburg (UCCH), Hamburg, Germany.²⁸Medical Faculty Heidelberg, Heidelberg University, Heidelberg, Germany.²⁹Department of Family Medicine, University of Virginia, Charlottesville, Virginia.³⁰Unit of Biomarkers and Susceptibility (UBS), Oncology Data Analytics Program (ODAP), Catalan Institute of Oncology (ICO), L'Hospitalet del Llobregat, Barcelona, Spain.³¹Consortium for Biomedical Research in Epidemiology and Public Health (CIBERESP), Madrid, Spain.³²Department of Clinical Sciences, Faculty of Medicine, University of Barcelona, Barcelona, Spain.³³Novo Nordisk Foundation Center for Basic Metabolic Research, Faculty of Health and Medical Sciences, University of Copenhagen, Denmark.³⁴Nutrition and Metabolism Branch, International Agency for Research on Cancer, World Health Organization, Lyon, France.³⁵Department of Medicine, Samuel Oschin Comprehensive Cancer Institute, Cedars-Sinai Medical Center, Los Angeles, California.³⁶Lunenfeld Tanenbaum Research Institute, Mount Sinai Hospital, University of Toronto, Toronto, Ontario, Canada.³⁷Cancer Epidemiology Division, Cancer Council Victoria, Melbourne, Victoria, Australia.³⁸Centre for Epidemiology and Biostatistics, Melbourne School of Population and Global Health, The University of Melbourne, Melbourne, Australia.³⁹Precision Medicine, School of Clinical Sciences at Monash Health, Monash University, Clayton, Victoria, Australia.⁴⁰Department of Medical Oncology & Therapeutics Research, City of Hope National Medical Center, Duarte California.⁴¹Center for Cancer Research, Medical University of Vienna, Vienna, Austria.⁴²Department of Radiation Sciences, Oncology Unit, Umeå University, Umeå, Sweden.⁴³Center for Gastrointestinal Biology and Disease, University of North Carolina, Chapel Hill, North Carolina.⁴⁴Department of Genetics, Stanford University, Stanford, California.⁴⁵Department of Computer Science, Stanford University, Stanford, California.⁴⁶Institute of Environmental Medicine, Karolinska Institutet, Stockholm, Sweden.⁴⁷University of Hawaii Cancer Center, Honolulu, Hawaii.⁴⁸Centre for Epidemiology and Biostatistics, Melbourne School of Population and Global Health, The University of Melbourne, Melbourne, Australia.⁴⁹Physical Activity Laboratory, Baker Heart and Diabetes Institute, Melbourne, Australia.⁵⁰Department of Clinical Sciences, Faculty of Medicine, University of Barcelona, Barcelona, Spain.⁵¹Department of Epidemiology, Richard M. Fairbanks School of Public Health, Indianapolis, Indiana.⁵²IU Melvin and Bren Simon Cancer Center, Indiana University, Indianapolis, Indiana.⁵³Department of Pathology, School of Medicine, Umm Al-Qura'a University, Mecca, Saudi Arabia.⁵⁴Department of Epidemiology, University of Washington School of Public Health, Seattle, Washington.⁵⁵Program in MPE Molecular Pathological Epidemiology, Department of Pathology, Brigham and Women's Hospital, Harvard Medical School, Boston, Massachusetts.⁵⁶Department of Oncologic Pathology, Dana-

Farber Cancer Institute, Boston, Massachusetts.⁵⁷Huntsman Cancer Institute, Salt Lake City, Utah.⁵⁸Department of Population Health Sciences, University of Utah, Salt Lake City, Utah.⁵⁹Department of Laboratory Medicine and Pathology, Mayo Clinic Arizona, Scottsdale, Arizona.⁶⁰Department of Medicine, Boston University School of Medicine, Slone Epidemiology Center, Boston University, Boston, Massachusetts.⁶¹Department of Epidemiology, Johns Hopkins Bloomberg School of Public Health, Baltimore, Maryland.⁶²Research Centre for Hauora and Health, Massey University, Wellington, New Zealand.⁶³Department of Community Medicine and Epidemiology, Lady Davis Carmel Medical Center, Haifa, Israel.⁶⁴Ruth and Bruce Rappaport Faculty of Medicine, Technion-Israel Institute of Technology, Haifa, Israel.⁶⁵Clalit National Cancer Control Center, Haifa, Israel.⁶⁶Department of Nutritional Sciences, University of Michigan School of Public Health, Ann Arbor, Michigan.⁶⁷Division of Research, Kaiser Permanente Northern California, Oakland, California.⁶⁸Department of Genetics and Genome Sciences, Case Western Reserve University, Cleveland, Ohio.⁶⁹Genomic Medicine Institute, Cleveland Clinic, Cleveland, Ohio.⁷⁰Department of Medicine and Epidemiology, University of Pittsburgh Medical Center, Pittsburgh, Pennsylvania.⁷¹Department of Internal Medicine, University of Utah, Salt Lake City, Utah.⁷²SWOG Statistical Center, Fred Hutchinson Cancer Research Center, Seattle, Washington.⁷³Division of Laboratory Genetics, Department of Laboratory Medicine and Pathology, Mayo Clinic, Rochester, Minnesota.⁷⁴School of Public Health, Capital Medical University, Beijing, China.⁷⁵Division of Human Nutrition and Health, Wageningen University & Research, Wageningen, the Netherlands.⁷⁶Wallenberg Centre for Molecular Medicine, Umeå University, Umeå, Sweden.⁷⁷Department of Molecular Biology of Cancer, Institute of Experimental Medicine of the Czech Academy of Sciences, Prague, Czech Republic.⁷⁸Institute of Biology and Medical Genetics, First Faculty of Medicine, Charles University, Prague, Czech Republic.⁷⁹Faculty of Medicine and Biomedical Center in Pilsen, Charles University, Pilsen, Czech Republic.⁸⁰Memorial University of Newfoundland, Discipline of Genetics, St. John's, Canada.⁸¹Department of Biostatistics, University of Washington, Seattle, Washington.⁸²Department of Epidemiology and Population Health, Albert Einstein College of Medicine, Bronx, New York.

L. Hsu, W.J. Gauderman, U. Peters, K.K. Tsilidis, and P.T. Campbell contributed equally as co-senior authors of this article.

Corresponding Authors: Peter T. Campbell, Albert Einstein College of Medicine, 1300 Morris Park Ave, Bronx, NY 10461. Phone: 718-430-4129. E-mail: peter.campbell@einsteinmed.edu; Konstantinos K. Tsilidis, Department of Epidemiology and Biostatistics, Imperial College London, School of Public Health, St. Mary's Campus, Norfolk Place, London W2 1PG, United Kingdom. Phone: 207-594-2623; E-mail: k.tsilidis@imperial.ac.uk; Ulrike Peters, Fred Hutchinson Cancer Center, 1100 Fairview Avenue N, M4-B402, Seattle, WA 98109-1024. Phone: 206-667-2450; E-mail: upeters@fredhutch.org; and W. James Gauderman, Department of Population and Public Health Sciences, Keck School of Medicine, University of Southern California, 1975, Zonal Ave, Los Angeles, CA 90033. E-mail: jimg@usc.edu

Cancer Res 2023;83:2572–83

doi: 10.1158/0008-5472.CAN-22-3713

This open access article is distributed under the Creative Commons Attribution 4.0 International (CC BY 4.0) license.

©2023 The Authors; Published by the American Association for Cancer Research

important carcinogenic mechanisms. To date, few studies have comprehensively investigated G×E interactions in the context of BMI and colorectal cancer risk (14–16). Interactions have been observed between BMI and known colorectal cancer GWAS loci on rs4779584 (secretogranin V, *SCG5*; ref. 15) and rs4939827 (*SMAD7*; ref. 14).

Because of the large risks for false discovery and ensuing penalties for multiple comparisons, the discovery of new G×E interactions may be limited by statistical power and sample size requirements (17, 18). In this study, we assessed G×BMI interactions using combined data from three large existing international colorectal cancer consortia using GWAS and BMI data.

Materials and Methods

Study participants

Our study sample consisted of individual level genomic and epidemiological data from 34 studies (50% prospective cohort studies) included in the Colorectal Cancer Family Registry (CCFR), Colorectal Cancer Transdisciplinary Study (CORECT), and Genetics and Epidemiology of Colorectal Cancer Consortium (GECCO). Control participants were matched by age, sex, genetically defined ancestry, and enrollment date/trial group, when applicable. Cases were defined as invasive colon or rectal tumors and were confirmed via a combination of sources, including clinical records, oncopathologic reports, state, or provincial cancer registries, and/or death certificates. A small subset of cases included were advanced adenomas ($n = 4,623$, 5.4%) confirmed by sigmoidoscopy or colonoscopy. Each study was approved by the relevant ethics committees or review boards pertaining to their institutions. All participants provided written informed consent during recruitment and all studies were conducted in accordance with ethical guidelines relevant to their geographic location and calendar year of enrollment (e.g., Declaration of Helsinki, CIOMS, Belmont Report, U.S. Common Rule).

Data harmonization and BMI assessment

Data harmonization consisted of a multistep procedure performed at the GECCO consortium coordinating center at the Fred Hutchinson Cancer Center as previously described (19). In brief, common data elements (CDE) were defined *a priori* for data harmonization. These CDEs represent common variables such as age and sex, or similar variables such as smoking or dietary intake. CDEs ensure that each variable defined is similar and comparable across different studies, hence allowing statistical analysis across a combined dataset. Study questionnaires and data dictionaries were examined, and elements were mapped to these CDEs through an iterative process of communication with data contributors. Definitions, permissible values, and standardized coding were implemented in a single database via SAS (RRID:SCR_008567) and T-SQL. The resulting data were checked for errors and outliers within and between the studies.

Demographic, anthropometric, and lifestyle variables such as sex, age, smoking, and self-reported or measured weight and height were collected via in-person interviews or structured self-administered questionnaires. In the cohort studies, standing height and body weight were ascertained at the time of blood collection or buccal swabs. In case-control studies, standing height was recalled at enrollment for cases and controls, except in REACH, where height was recalled a year prior to the time of interview in cases and controls, and in DACHS, where it was recalled at the time of enrollment in controls and diagnosis in cases. Body weight was recalled 1 to 2 years prior to enrollment of controls or diagnosis of cases in most case-control studies to avoid bias from illness-associated weight loss, except for

DACHS and DALs where prediagnostic (in cases) and pre-enrollment (in controls) recall times were 5 to 14 years and 2 to 5 years, respectively. In CRCGEN, weight was recalled at the age of 45 years in cases and controls or 10 years before diagnosis in cases. BMI was calculated as the weight (kg) of each participant divided by the square of the height (m^2). We scaled the BMI to reflect a 5 kg/m^2 increment as our main analytical variable. In addition, for categorical analyses, we used the World Health Organization (WHO) predefined BMI cut-off points for normal weight (18.5 to <25 kg/m^2), overweight (≥ 25.0 to <30 kg/m^2), and obesity (≥ 30 kg/m^2). We excluded a small number of participants with a BMI below 18.5 kg/m^2 ($n = 677$) because of reported nonlinear associations between BMI and colorectal cancer risk at this end of the BMI continuum (20).

Genotyping and imputation

DNA was extracted from blood or buccal samples. Genotype data were generated from germline DNA on the Affymetrix Axiom (CORECT), UK Biobank Axiom (UK Biobank), Illumina 1M, 1M-Duo, or Omni1 (CCFR), Illumina 300 K, Illumina OmniExpress, Illumina 550K/610 K, or Affymetrix 100K/500 K (GECCO), and Illumina Omni 2.5 in the Molecular Epidemiology of Colorectal Cancer Study (MECC) as detailed elsewhere (8, 10) and summarized presented in Supplementary Table S1. High-density genotype array data were cleaned by applying standard quality control filters at both individual subject and SNP levels. Genotype data for case and control participants were phased and imputed together by an array platform, thus avoiding any potentially differential imputation error between case and control participants.

Participants were excluded based on genotyping call rates (<97%), heterozygosity, duplicates or close proximity, and inconsistencies between self-reported and genotypic sexes. We limited the analyses to individuals of European ancestry (3,586 participants of non-European descent were excluded) as determined by genetically defined ancestry and principal components (PC) clustering results with 1000 Genomes EUR populations. In terms of markers, we excluded SNPs based on missing call rates (> 2 to 5%), departure from Hardy-Weinberg Equilibrium ($P < 1 \times 10^{-4}$), and discordant genotype calls within duplicate samples. Genotypes were imputed to the Haplotype Reference Consortium (version r1.1) using the University of Michigan Imputation Server (21). To facilitate data management and analysis, genotypes were converted into a binary format using the BinaryDosage R package (<https://cran.r-project.org/web/packages/BinaryDosage>). We filtered imputed SNPs based on imputation accuracy of $R^2 > 0.8$ and minor allele frequency (MAF) $> 1\%$. Over 7.2 million SNPs were retained after imputation and quality control, among which ~ 1 million SNPs were evaluated in our analysis because of the correlation between SNPs. PC analysis for population stratification assessment was performed using PLINK1.9 (RRID:SCR_001757) on 30,000 randomly selected imputed SNPs with MAF and R^2 over 5% and 0.99, respectively. colorectal cancer molecular subtypes, that is, *BRAF* and *KRAS* mutation status, CpG island methylator phenotype (CIMP), and microsatellite instability (MSI), were analyzed in the subset with available tumor samples (6,565 cases; Supplementary Table S2). *BRAF*, CIMP, *KRAS*, and MSI were determined using specific markers assessed using PCR, sequencing, or IHC.

Statistical analyses

Logistic regression models were run to examine associations between BMI and colorectal cancer risk in each study, and the results for all the studies were summarized using random-effects meta-analysis methods (Hartung-Knapp) to obtain summary ORs and

95% confidence intervals (CI). We calculated the heterogeneity P values using Cochran's Q statistics, while funnel plots identified studies with potential outlying ORs. We fitted the models overall and further stratified them by study design, sex, and tumor site in the colon and rectum. All meta-analyses of BMI main effects were performed using the R package Meta (RRID:SCR_019055; ref. 22).

We performed genome-wide interaction scans using the R package $G \times E$ ScanR (23), which implements several interaction testing methods. Our analyses included conventional logistic regression with multiplicative interaction terms (1 degree of freedom test, 1DF), two-step EDGE method (17), and 3DF analyses (24), as detailed in the Supplementary methods. Compared with the 1DF, the joint 3DF test has higher power to detect $G \times E$ interactions when they exist, while accommodating the main effect of each variant on risk of colorectal cancer (D|G) and the effect of the environment on colorectal cancer risk (E|G) associations (24). The two-step method reduces the burden of multiple testing by preserving the statistical power, mainly through the initial filtering step that incorporates the D|G and E|G associations. We presented the 1DF analysis and the two-step method, followed by the 3DF test. The rationale for presenting the results in this order is that both the 1DF and two-step method test directly for $G \times E$ interactions, the first as a classic test and the latter as a generally more powerful test. The 3DF analysis is presented last because it tests interaction indirectly and is particularly powerful in the presence of association between G and D or between G and E induced by interaction.

To identify novel loci, we filtered out previously known GWAS hits and SNPs identified in linkage disequilibrium (LD) with them in the 1000 Genomes EUR dataset. All models were adjusted for study, sex, age at diagnosis or enrollment, and the first three PCs of genetic ancestry to account for population substructure. For SNPs that reached statistical significance ($P = 5.0 \times 10^{-8}/3 = 1.67 \times 10^{-8}$, to account for three main tests) or showed a trend towards that threshold ($P < 5 \times 10^{-6}$), we performed stratified $G \times E$ analyses by sex, tumor site (proximal colon, distal colon, rectum), and study design. We also added smoking status (never/ever), an established risk factor for colorectal cancer, to the multivariate models. We did not adjust for other lifestyle or dietary variables associated with colorectal cancer, such as alcohol consumption, physical inactivity, intake of red and processed meats, or calcium, because they do not interact with the SNPs and their inclusion in previous genetic analyses in our consortium (25) did not materially change the associations with colorectal cancer.

We calculated ORs stratified by BMI categories (normal, overweight, obese) and genotype to examine the patterns of stratum-specific associations. These models were fitted using imputation posterior probabilities and visualized with a plot of predicted log-odds versus genotype by BMI category. As the positive association between obesity and colorectal cancer risk was consistently stronger in males than in females, we also explored the $G \times BMI$ interactions separately by sex. We used logistic regression (cases/controls; mutated/nonmutated) and nominal polytomous logistic regression (mutated/nonmutated/controls) to explore the interactions between the significant SNPs and BMI on colorectal tumor molecular subtypes, that is, *BRAF* and *KRAS* mutation status, CIMP, and MSI.

Functional annotations were examined for the significant findings, as described in the Supplementary methods. In brief, the magnitude of the association, the extent of the association explained by LD, as well as chromosomal position and neighboring SNPs and genes were investigated. Regional plots were generated using the command line version (Standalone) of LocusZoom v1.3 (26). The putative functional role of the SNPs with significant interactions and those in LD ($r^2 > 0.2$) at 500 kb flanking regions were explored relative to their potential

contribution to regulate gene expression by their physical location in regions of chromatin accessibility or histone modifications (variant enhancer loci). Genes where expression in colon tissue samples were regulated by functional SNPs (P values below 5×10^{-4}) were identified using the colon transverse tissue samples from GTEx v8 dataset, and the colon transcriptome explorer (CoTrEx 2.0; <https://barcuvaseq.org/cotrex>, accessed January 2023) of the University of Barcelona and University of Virginia genotyping and RNA sequencing (BarcUVA-Seq) project dataset (27). This dataset is comprised of 445 epithelium-enriched healthy colon biopsies from ascending, transverse, and descending colon. We retrieved for each significant SNP, the genes with available expression and located within one million base pairs. The gene expressions were fit in a gene only model, and subsequently in a model including the interaction between the continuous gene expression and BMI, and a model with the gene expression in categories.

All statistical analyses were performed using R version 3.6.0. (RRID:SCR_001905, Foundation for Statistical Computing).

Data and code availability

The datasets and code supporting the current study have not been deposited in a public repository because they are part of an international consortium but are available from the corresponding author upon request.

Results

A total of 36,415 colorectal cancer cases (17,139 females) and 48,451 control (23,717 females) participants were included in this analysis. Mean age (SD) of the participants was 63.8 (10.4) and 62.4 (9.7) years in case and control participants, respectively (Table 1).

In a meta-analysis of all the participating studies, each 5 kg/m² increase in BMI was associated with 17% higher risk of colorectal cancer (OR = 1.17; 95% CI, 1.12–1.21; Fig. 1). The positive association was consistent across study designs, sex, and tumor anatomical subsites, although the estimated BMI effect was higher in males (OR = 1.22; 95% CI, 1.16–1.28) compared with females (OR = 1.13; 95% CI, 1.08–1.18; $P_{\text{interaction}} = 4.47 \times 10^{-8}$) and in the distal colon (OR = 1.23; 95% CI, 1.17–1.29) compared with the proximal colon (OR = 1.15; 95% CI, 1.10–1.20; $P_{\text{interaction}} = 0.003$) or the rectum (OR = 1.10; 95% CI, 1.05–1.16; $P_{\text{interaction}} = 9.0 \times 10^{-8}$).

Table 2 summarizes the most prominent SNP \times BMI interactions. The quantile-quantile (Q-Q) plot for $G \times BMI$ interaction for the 1DF analysis did not reveal residual stratification in the study population (Supplementary Fig. S1). In the 1DF exploration using multiplicative interaction terms in logistic regression models, we did not observe any genome-wide statistically significant loci interacting with BMI on colorectal cancer risk (Supplementary Fig. S2). Nine SNPs with P values below 5×10^{-6} in the 1DF are presented in Supplementary Table S3.

In the two-step EDGE approach, we observed a statistically significant interaction between variants located in the formin 1/Gremlin 1 (*FMN1/GREML1*) gene region and BMI in colorectal cancer risk (Supplementary Fig. S3). The lead SNP with the lowest P value was rs58349661 ($P_{\text{step 2}} = 4.97 \times 10^{-6} < P_{\text{threshold}} = 4.3 \times 10^{-5}$), which was in high LD with surrounding SNPs showing similar significant interactions (Supplementary Table S4). The 3DF test also identified this locus interacting with BMI on colorectal cancer risk (rs58349661 $P_{3DF} = 3.68 \times 10^{-10}$; Supplementary Table S3). Consistent with these findings, we observed suggestive findings for SNPs in this locus in the 1DF test (rs58349661 $P_{1DF} = 4.97 \times 10^{-6}$) as well as strong

Table 1. Selected characteristics of the participants.

	Cases (n = 36,415)	Controls (n = 48,451)
Females, %	47.1	49.0
Age, yrs, mean ± SD	63.8 ± 10.4	62.4 ± 9.7
Anthropometry, mean ± SD		
Height, cm	169 ± 9.6	169 ± 9.6
BMI, kg/m ²	27.5 ± 4.8	27.1 ± 4.6
Socio-demographic and lifestyle, %		
Education (highest completed)		
Less than high school	26.9	21.7
High school/GED	18.8	14.7
Some college	22.5	24.7
College/graduate school	27.3	32.2
Smoking, ever		
No	44.5	49.0
Yes	53.1	49.5
Medical information, %		
Type 2 diabetes (ever diagnosed)		
No	81.7	85.0
Yes	11.8	8.4
Any postmenopausal HRT use		
No	20.3	21.8
Yes	11.1	13.3
Regular aspirin or NSAID use		
No	53.9	51.2
Yes	27.9	34.2
Dietary intake, Mean ± SD		
Energy, kcal/day	1,950 ± 760	1,890 ± 717
Calcium, mg/day	790 ± 442	809 ± 440
Folate, mcg/day	373 ± 217	389 ± 222
Fiber, g/day	19.5 ± 9.8	19.8 ± 9.7
Red meat, servings/day	0.7 ± 0.6	0.6 ± 0.6
Processed meat, servings/day	0.4 ± 0.4	0.3 ± 0.4
Fruit, servings/day	2.0 ± 1.7	2.2 ± 1.8
Vegetable, servings/day	2.9 ± 2.5	2.6 ± 2.5

Note: Frequencies may not add up to 100 due to missing values. Abbreviations: GED, general educational development; HRT, hormone replacement therapy; NSAID, nonsteroidal anti-inflammatory drugs.

association with colorectal cancer (rs58349661 $P_{(D|G)} = 4.3 \times 10^{-7}$) and BMI (rs58349661 $P_{(E|G)} = 3.7 \times 10^{-10}$).

This locus is within the *FMN1/GREMI* gene region with *SCG5* and has transmembrane and coiled-coil domains 5 B (*TMCO5B*) as neighboring genes (LocusZoom plot for rs1975678, Fig. 2). While investigating the relationship between rs58349661 and previously studied genetic variants, we found that this locus is close to, but not in strong LD ($R^2 = 0.002$ to 0.162) with genetic variants previously associated with colorectal cancer in *FMN1* (rs16959063, rs17816465), *GREMI* (rs10318, rs1919364), and *SCG5* (rs16969681, rs4779584; refs. 8, 28, 29). None of these variants showed a significant interaction with BMI after correction for multiple testing (Fig. 2).

Among participants with CC and CT genotypes of rs58349661, overweight ($OR_{CC} = 1.13$; 95% CI, 1.08–1.18; $OR_{CT} = 1.12$; 95% CI, 1.05–1.18) and obesity ($OR_{CC} = 1.45$; 95% CI, 1.38–1.52; $OR_{CT} = 1.28$; 95% CI, 1.19–1.37) were associated with higher colorectal cancer risk, whereas null associations were observed across BMI categories in those with the TT genotype (OR_{TT} overweight = 1.02; 95% CI, 0.86–1.19; OR_{TT} obesity = 1.00; 95% CI, 0.83–1.21; Fig. 3). Similarly, analyses stratified by BMI showed that the CT and TT genotypes were associated with a higher colorectal cancer risk in participants with normal BMI or overweight, but the risk was null in obese participants

(Supplementary Table S5). Analyses of rs58349661 \times BMI stratified by sex, study design, and tumor anatomical location showed similar results as in the whole study population (Supplementary Table S6). The interaction between the T allele of rs58349661 and BMI did not differ across tumor molecular subtypes (all P values comparing mutated vs. nonmutated for *BRAF* mutation, *KRAS* mutation, CIMP, and MSI were > 0.05 ; Supplementary Fig. S4).

We did not observe that rs58349661 or correlated SNPs (e.g., rs1975678, which is in perfect LD with rs58349661, $R^2 = 1$, Supplementary Table S4) were associated with gene expression. rs58349661 was not associated with gene expression in colon tissues in the GTEx v8 data. Nevertheless, rs58349661 (or variants in LD) were expressed in other tissues, especially in cultured fibroblasts. These SNPs reside in a region with high H3K27ac activity in normal colonic epithelium, but this activity is lost in tumor cells (Supplementary Fig. S5). Genes near variant rs58349661 identified via the BarcUVa dataset were *AC123768.3*, Rho GTPase activating protein 11A (*ARHGAP11A*), apoptosis and caspase activation inhibitor (*AVEN*), cholinergic receptor nicotinic alpha 7 subunit (*CHRNA7*), *FMN1*, and ryanodine receptor 3 (*RYR3*), of which, a significant interaction with BMI was observed for *AVEN* ($P_{interaction} = 0.04$) and *CHRNA7* ($P_{interaction} = 0.04$; Supplementary Table S7).

Discussion

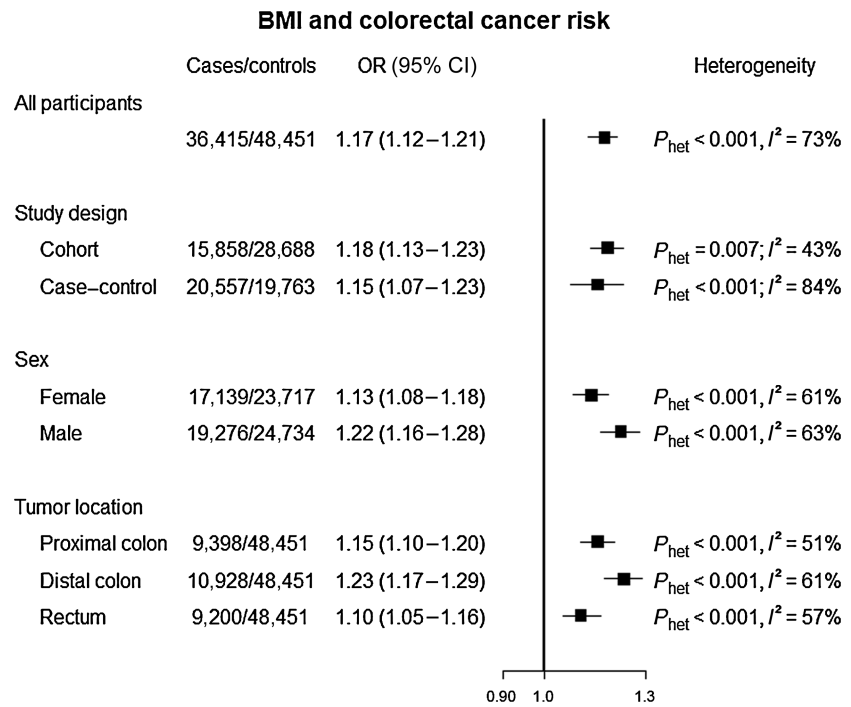
In this study from three large international colorectal cancer consortia, we discovered a new locus located within the *FMN1/GREMI* gene region (rs58349661) that interacts with BMI on the association with colorectal cancer risk. Analyses stratified by genotypes of rs58349661 showed that obesity and overweight were associated with a higher risk of colorectal cancer in those with the CC genotype but not in those with the TT genotype, which showed consistently null associations across BMI categories.

Our novel G \times BMI finding at the *FMN1/GREMI* locus is close to a region with multiple known GWAS loci for colorectal cancer risk. Among the ~ 200 SNPs associated with colorectal cancer in GWAS, an increasing number of independent loci have been located within the broader *SCG5-GREMI-FMN1* region (rs17816465, rs10318, rs1919364, rs16969681, and rs4779584; refs. 8, 30, 31). The lead SNP (rs58349661), as well as other correlated SNPs in our interaction analysis, has not been previously observed in GWAS analyses for colorectal cancer risk. Moreover, none of these genetic variants were in strong LD with previously known loci, suggesting that this interaction locus was independent of previously known loci. Our finding of a higher colorectal cancer risk associated with obesity and the CC genotype, and null associations with the TT genotype, suggests that T and C alleles may participate in specific mechanisms that influence the effect of obesity on colorectal cancer risk.

The mechanisms by which obesity affects colorectal cancer risk are not fully understood, but several plausible hypotheses have been proposed, including the colonic microenvironment and related systemic inflammation, oxidative stress, and major changes in other metabolic activities, including hyperinsulinemia and diabetes mellitus (32). At the histologic and cellular levels, obesity originates from uncontrolled hyperplasia and/or hypertrophy of the adipocytes. GWAS studies on adiposity traits, including BMI, have not reported any associations with SNPs within *FMN1* gene (33–37). This is consistent with gene expression studies that did not report the major activity of *FMN1* in matured adipocytes (38). In contrast to adipocytes, *FMN1* is expressed in the colon and rectal mucosal cells (38). *FMN1* is known to interact with alpha-catenin in the production of adherens

Figure 1.

OR and 95% CI for colorectal cancer risk associated with BMI (per 5 kg/m² increment). The OR and 95% CIs were calculated for individual participating studies and then meta-analyzed.



junctions and polymerization of actin monomers (39). Hence, this phenomenon is mainly observed during the formation of epithelial sheets in adipocyte stem cells when linear actin cables and microtubules are formed at adherens junctions (40). This may explain why *FMNI* activity is not observed in fully developed adipocytes. *FMNI* has been reported as an epigenomic region associated with early childhood adiposity, a period in which adipose tissue is still in development (41).

Although very little is known about *FMNI* and colorectal cancer, there are extensive data on formins, more generally, their role in developmental biology, WNT signaling, and their association with colorectal cancer. Humans have 15 Formin genes including *FMNI* (38). These genes are defined by a ~400 amino acid formin homology-2 (FH2) domain, which is the actin nucleation apparatus responsible for eukaryotic actin filament assembly and elongation (42, 43). FH2 influences actin dynamics and is common in

all Formins across multiple eukaryotic species (44). Formins were originally identified at the mouse limb deformity locus (45) and *FMNI* particularly is central to one of the human syndactyly disorders (46), another one of which involves a novel splicing mutation in *APC* that results in an ~80% reduction in the wildtype transcript (47). Several Formins (including *DAAMI* and *DAAM2*) are key components of canonical WNT signaling in cancer development (48, 49), thus they are involved in *APC* mutation and colon polyp formation. A variety of Formins but not *FMNI*, have been implicated in invasion and metastasis of colorectal cancer (38). Additional studies are necessary to fully understand the possible contribution of *FMNI* to colorectal tumor development according to obesity status.

In a previous G×BMI analysis, we observed a locus located within *SMAD7* that interacts with BMI on colorectal cancer risk. Our current

Table 2. Summary of G × BMI analyses using 1DF, two-step, and 3DF analyses.

Method	G×E significant	Position ^a	Gene	chr	A1	A2	MAF	$P_{(D G)}$ ^b	$P_{(E G)}$ ^c	<i>P</i> values for each method				
										P_{1DF}	$P_{\text{step 1 EDGE}}$ ^d	$P_{\text{step 2 EDGE}}$ ^e	P_{3DF}	
1DF	None													
Two-step	15 SNPs													
EDGE	(all in LD) ^f													
rs58349661	–	33122966	<i>FMNI</i>	15	C	T	0.21	4.3×10^{-7}	3.7×10^{-10}	5.0×10^{-6}	2.22×10^{-6}	4.97×10^{-6}	3.7×10^{-10}	
3DF	12 SNPs													
	(E G driven) ^g													

Abbreviations: DF, degrees of freedom; EDGE, elastic data-driven genetic encoding.

^aPosition based on NCBI Build37.

^bAssociation between genetic variant and colorectal cancer.

^cAssociation between genetic variant and BMI.

^dTwo-step EDGE filtering *P* value.

^eTwo-step EDGE second step *P* value.

^fFive SNPs, all located on *FMNI* and LD (presented in Supplementary Tables). The SNP with the lowest *P* value was rs58349661.

^gTwelve SNPs were significant for G×BMI in the 3DF analyses (presented in Supplementary Tables). None of these SNPs had a marginal G effect, except for rs58349661 (previously observed in the two-step approach) and rs7313400. The latter was not significant in the 1DF analysis ($P_{1DF} = 0.07$).

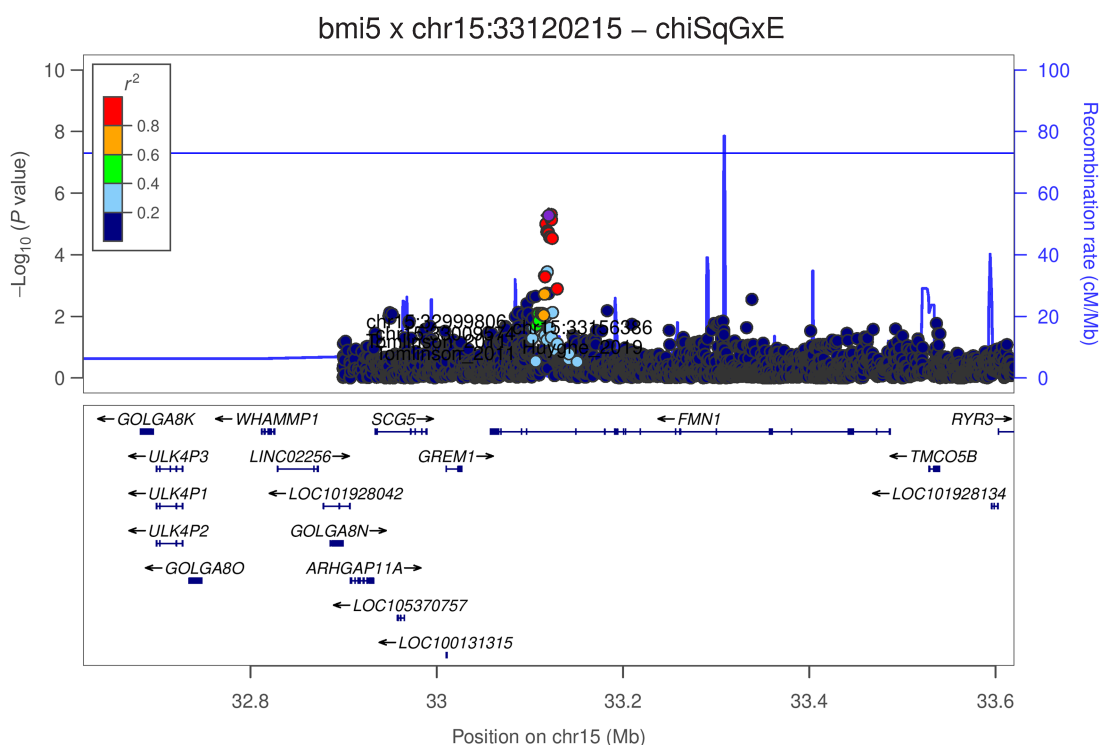


Figure 2. LocusZoom plots for the interaction between rs58349661 (rs1975678 used as perfect LD proxy) and colorectal cancer. The genomic position is shown on the x-axis whereas the y-axis reports the $-\log_{10}$ of the P value of the interaction with BMI. Purple dot, rs1975678. The colors of the SNPs are based on their correlation with rs1975678. Previously known GWAS variants, with their references, are also included: rs17816465, rs1919364, rs12708491.

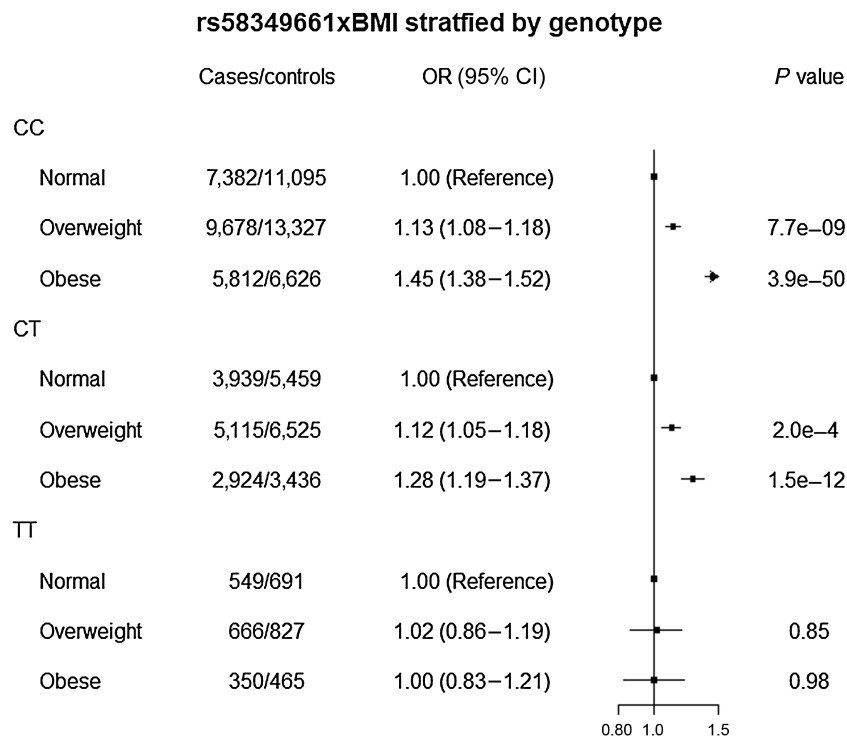


Figure 3. BMI in relation to colorectal cancer risk, stratified by genotype. Using normal BMI as the reference, risk for colorectal cancer was estimated for overweight and obesity across the genotypes of rs58349661.

analytical strategy excluded *SMAD7* and other known GWAS loci for colorectal cancer and BMI. TGF β in cellular proliferation and inflammation has been proposed as a mechanism of action through which *SMAD7* interacts with colorectal cancer risk (50). In contrast to the tumor-promoting profile of *SMAD7* in obesity, *FMN1* does not have a clear relationship with inflammation. It is possible that *FMN1* acts in tandem with neighboring genes, such as *GREM1* and *SCG5* because the catena *SCG5-GREM1-FMN1* constitutes a hotspot for several colorectal cancer-related SNPs. Animal studies have shown that *GREM1* may be activated by a cis-regulatory region within *FMN1* (51). Given that the SNPs interacting with BMI are located within the enhancer region, as indicated by high H3K27ac activity, it might also be possible that these SNPs impact *GREM1*. Moreover, *GREM1* has been associated with cancer fibroblasts in colonic and rectal smooth muscles and colonic crypt bases, and may participate in colorectal tumorigenesis through bone morphogenetic protein (BMP) signaling (52). Mutations in *GREM1* are associated with the development of hereditary mixed polyposis syndrome (HMPS), a rare condition associated with an increased development of colon polyps and higher colorectal cancer risk, often beginning in childhood. Overexpression of *GREM1*, as observed in HMPS, acts as a BMP antagonist, thus allowing the cells to conserve stem properties and develop into neoplasia (53). Experimental studies using animal and human models have shown that increased expression of *GREM1* can induce epithelial dedifferentiation through BMP signaling and initiate gut cells neoplasia (54, 55). Future studies should specifically aim to unveil the potential mechanisms by which this SNP interacts with obesity on the association with colorectal cancer risk.

The main strength of our study was the sample size, the largest ever to have examined G \times BMI associations. The use of several complementary statistical approaches was also a strength because it allowed clear characterization of a specific locus within *FMN1/GREM1* that was consistently captured in the two-step and 3DF analyses, with a suggestive association indicated by the 1DF test. One limitation of our study is that it included only participants of European ancestry; hence, our findings may not be generalizable to other populations. Notably, the T allele of rs58349661 is common in other populations, with frequencies of 0.186, 0.518, 0.210, 0.307, 0.216 in African, East Asian, European, South Asian, and American populations, respectively. The A allele (rs58349661 is triallelic) is rare in all populations (frequency in Asian, European, and American populations \approx 0), except in the African population where it has a frequency of 0.059. Another limitation is that a recall time of 1 to 2 years prediagnosis in some (but not all) case-control studies may not be enough to rule out weight loss due to the tumor. Such weight loss may also have affected the BMI at recruitment in colorectal cancer cases occurring during the early years of follow-up in cohort studies.

In conclusion, we identified a new locus in the *FMN1/GREM1* gene region that interacts with BMI on the association with colorectal cancer risk. This locus has not been previously described in relation to obesity or colorectal cancer, and additional investigation is required to elucidate the potential mechanisms by which it may modify the detrimental effects of obesity in promoting colorectal carcinogenesis.

Authors' Disclosures

J. Morrison reports grants from NCI during the conduct of the study. E.L. Barry reports grants from NIH/NCI during the conduct of the study. J.W. Baurley reports personal fees from BioRealm LLC outside the submitted work. S.A. Bien reports being currently employed by and owning stock in Adaptive Biotechnologies. G. Casey reports grants from NIH/NCI during the conduct of the study and from NIH/NCI outside the submitted work. A.T. Chan reports grants and personal fees from Pfizer

Inc., Freenome, Zoe Ltd., Bayer Pharma AG, and Boehringer Ingelheim outside the submitted work. D. Drew reports grants from NIH during the conduct of the study. G. G. Giles reports grants from National Health and Medical Research Council (Australia) during the conduct of the study. S.B. Gruber reports other support from Brogent International LLC outside the submitted work. H. Hampel reports personal fees from Genome Medical, Natera, Promega, GI OnDemand, 23andMe, and Carelon during the conduct of the study. M.A. Jenkins reports grants from University of Melbourne during the conduct of the study and National Health and Medical Research Council, Australia outside the submitted work. K. Jordahl reports grants from NCI during the conduct of the study and personal fees from Bristol Myers Squibb outside the submitted work. A.D. Joshi reports other support from Regeneron outside the submitted work. E.S. Kawaguchi reports grants from NCI during the conduct of the study. B.M. Lynch reports grants from Victorian Cancer Agency during the conduct of the study. V. Moreno reports grants from Instituto de Salud Carlos III and Spanish Association Against Cancer (AECC) Scientific Foundation during the conduct of the study. S. Ogino reports grants from NIH during the conduct of the study. R.K. Pai reports personal fees from Alimentiv Inc., Allergan, Eli Lilly, and Verily outside the submitted work. E.A. Platz reports grants from NIH, AICR during the conduct of the study and personal fees from AACR outside the submitted work. R.L. Prentice reports grants from National Heart, Lung and Blood Institute during the conduct of the study. L.C. Sakoda reports grants from NCI during the conduct of the study. P.C. Scacheri reports personal fees from Kronos Bio outside the submitted work. S.L. Schmit reports grants from NIH during the conduct of the study. R.E. Schoen reports grants from Freenome, Immunovia, and Exact outside the submitted work. M.C. Stern reports grants from NIH during the conduct of the study. Y.R. Su reports grants from NIH and Patient-Centered Outcomes Research Institute outside the submitted work. D.C. Thomas reports grants from NCI during the conduct of the study. C.M. Ulrich reports grants from NIH outside the submitted work. A. Wolk reports grants from Swedish Research Council and Swedish Cancer Foundation during the conduct of the study. W.J. Gauderman reports grants from NCI during the conduct of the study. No disclosures were reported by the other authors.

Disclaimer

The content of this publication does not necessarily reflect the views or policies of the Department of Health and Human Services, nor does mention of trade names, commercial products, or organizations imply endorsement by the US government.

Authors' Contributions

E.K. Aglago: Software, methodology, writing—original draft, writing—review and editing. A. Kim: Data curation, software, formal analysis, validation, investigation, visualization, methodology, writing—review and editing. Y. Lin: Conceptualization, resources, writing—review and editing. C. Qu: Data curation, software, formal analysis, writing—review and editing. M. Evangelou: Resources, writing—review and editing. Y. Ren: Resources, writing—review and editing. J. Morrison: Resources, writing—review and editing. D. Albanes: Resources, writing—review and editing. V. Arndt: Resources, writing—review and editing. E.L. Barry: Resources, writing—review and editing. J.W. Baurley: Resources, writing—review and editing. S.I. Berndt: Resources, writing—review and editing. S.A. Bien: Resources, writing—review and editing. D.T. Bishop: Resources, writing—review and editing. E. Bouras: Resources, writing—review and editing. H. Brenner: Resources, writing—review and editing. D.D. Buchanan: Resources, writing—review and editing. A. Budiarto: Resources, writing—review and editing. R. Carreras-Torres: Resources, writing—review and editing. G. Casey: Resources, writing—review and editing. T.W. Cenggoro: Resources, writing—review and editing. A.T. Chan: Resources, writing—review and editing. J. Chang-Claude: Resources, writing—review and editing. X. Chen: Resources, writing—review and editing. D.V. Conti: Resources, writing—review and editing. M. Devall: Resources, writing—review and editing. V. Diez-Obrero: Resources, writing—review and editing. N. Dimou: Resources, writing—review and editing. D. Drew: Resources, writing—review and editing. J.C. Figueiredo: Resources, writing—review and editing. S. Gallinger: Resources, writing—review and editing. G.G. Giles: Resources, writing—review and editing. S.B. Gruber: Resources, writing—review and editing. A. Gsur: Resources, writing—review and editing. M.J. Gunter: Resources, writing—review and editing. H. Hampel: Resources, writing—review and editing. S. Harlid: Resources, writing—review and editing. A. Hidaka: Resources, writing—review and editing. T.A. Harrison: Resources, writing—review and editing. M. Hoffmeister: Resources, writing—review and editing. J.R. Huyghe: Resources, writing—review and editing. M.A. Jenkins: Resources, writing—review and editing. K. Jordahl: Resources, writing—review and editing. A.D. Joshi: Resources, writing—

review and editing. **E.S. Kawaguchi**: Resources, writing–review and editing. **T.O. Keku**: Resources, writing–review and editing. **A. Kundaje**: Resources, writing–review and editing. **S.C. Larsson**: Resources, writing–review and editing. **L. Le Marchand**: Resources, writing–review and editing. **J.P. Lewinger**: Resources, writing–review and editing. **L. Li**: Resources, writing–review and editing. **B.M. Lynch**: Resources, writing–review and editing. **B. Mahesworo**: Resources, writing–review and editing. **M. Mandic**: Resources, writing–review and editing. **M. Obón-Santacana**: Resources, writing–review and editing. **V. Moreno**: Resources, writing–review and editing. **N. Murphy**: Resources, writing–review and editing. **H. Nan**: Resources, writing–review and editing. **R. Nassir**: Resources, writing–review and editing. **P.A. Newcomb**: Resources, writing–review and editing. **S. Ogino**: Resources, writing–review and editing. **J. Ose**: Resources, writing–review and editing. **R.K. Pai**: Resources, writing–review and editing. **J.R. Palmer**: Resources, writing–review and editing. **N. Papadimitriou**: Resources, writing–review and editing. **B. Pardamean**: Resources, writing–review and editing. **A.R. Peoples**: Resources, writing–review and editing. **E.A. Platz**: Resources, writing–review and editing. **J.D. Potter**: Resources, writing–review and editing. **R.L. Prentice**: Resources, writing–review and editing. **G. Rennert**: Resources, writing–review and editing. **E. Ruiz-Narvaez**: Resources, writing–review and editing. **L.C. Sakoda**: Resources, writing–review and editing. **P.C. Scacheri**: Resources, writing–review and editing. **S.L. Schmit**: Resources, writing–review and editing. **R.E. Schoen**: Resources, writing–review and editing. **A. Shcherbina**: Resources, writing–review and editing. **M.L. Slattery**: Resources, writing–review and editing. **M.C. Stern**: Resources, writing–review and editing. **Y.-R. Su**: Resources, writing–review and editing. **C.M. Tangen**: Resources, writing–review and editing. **S.N. Thibodeau**: Resources, writing–review and editing. **D.C. Thomas**: Resources, writing–review and editing. **Y. Tian**: Resources, writing–review and editing. **C.M. Ulrich**: Resources, writing–review and editing. **F.J.B. van Duijnhoven**: Resources, writing–review and editing. **B. Van Guelpen**: Resources, writing–review and editing. **K. Visvanathan**: Resources, writing–review and editing. **P. Vodicka**: Resources, writing–review and editing. **J. Wang**: Resources, writing–review and editing. **E. White**: Resources, writing–review and editing. **A. Wolk**: Resources, writing–review and editing. **M.O. Woods**: Resources, writing–review and editing. **A.H. Wu**: Resources, writing–review and editing. **N. Zemlianskaia**: Resources, methodology, writing–review and editing. **L. Hsu**: Conceptualization, resources, supervision, writing–review and editing. **W.J. Gauderman**: Conceptualization, resources, formal analysis, supervision, visualization, methodology, project administration, writing–review and editing. **U. Peters**: Conceptualization, supervision, funding acquisition, validation, project administration, writing–review and editing. **K.K. Tsilidis**: Conceptualization, resources, supervision, funding acquisition, methodology, project administration, writing–review and editing. **P.T. Campbell**: Conceptualization, resources, supervision, funding acquisition, methodology, project administration, writing–review and editing.

Acknowledgments

EK. Aglago's associateship was supported by a Cancer Research UK (CRUK) grant awarded to K.K. Tsilidis (PPRCPT\100005). GECCO: NCI, NIH, U.S. Department of Health and Human Services (U01 CA137088, R01 CA059045, U01 CA164930, R01201407). Genotyping/Sequencing services were provided by the Center for Inherited Disease Research (CIDR) contract number HHSN2682017000061 and HHSN2682012000081. This research was funded in part through the NIH/NCI Cancer Center Support Grant P30 CA015704. Scientific Computing Infrastructure at Fred Hutchinson Cancer Center funded by ORIP grant S10OD028685.

The ATBC Study is supported by the Intramural Research Program of the U.S. NCI, NIH, Department of Health and Human Services.

CLUE II funding was from the NCI (U01 CA86308, Early Detection Research Network; P30 CA006973), National Institute on Aging (U01 AG18033), and the American Institute for Cancer Research.

Maryland Cancer Registry (MCR): Cancer data was provided by the Maryland Cancer Registry, Center for Cancer Prevention and Control, Maryland Department of Health, with funding from the State of Maryland and the Maryland Cigarette Restitution Fund. The collection and availability of cancer registry data is also supported by the Cooperative Agreement NU58DP006333, funded by the Centers for Disease Control and Prevention. Its contents are solely the responsibility of the authors and do not necessarily represent the official views of the Centers for Disease Control and Prevention or the Department of Health and Human Services.

The Colon Cancer Family Registry (CCFR, www.coloncf.org) is supported in part by funding from the NCI, NIH (award U01 CA167551). Support for case ascertainment was provided in part from the Surveillance, Epidemiology, and End Results (SEER) Program and the following U.S. state cancer registries: AZ, CO, MN, NC, NH; and by the Victoria Cancer Registry (Australia) and Ontario Cancer Registry

(Canada). The CCFR Set-1 (Illumina 1M/1M-Duo) and Set-2 (Illumina Omni1-Quad) scans were supported by NIH awards U01 CA122839 and R01 CA143247 (to G. Casey). The CCFR Set-3 (Affymetrix Axiom CORECT Set array) was supported by NIH award U19 CA148107 and R01 CA81488 (to S.B. Gruber). The CCFR Set-4 (Illumina OncoArray 600K SNP array) was supported by NIH award U19 CA148107 (to S.B. Gruber) and by the Center for Inherited Disease Research (CIDR), which is funded by the NIH to the Johns Hopkins University, contract number HHSN2682012000081. Additional funding for the OFCCR/ARCTIC was through award GL201–043 from the Ontario Research Fund, award 112746 from the Canadian Institutes of Health Research, through a Cancer Risk Evaluation (CaRE) Program grant from the Canadian Cancer Society (to S. Gallinger), and through generous support from the Ontario Ministry of Research and Innovation. The SFCCR Illumina HumanCytoSNP array was supported in part through NCI/NIH awards U01/U24 CA074794 and R01 CA076366 (to P.A. Newcomb). The content of this manuscript does not necessarily reflect the views or policies of the NCI, NIH or any of the collaborating centers in the Colon Cancer Family Registry (CCFR), nor does mention of trade names, commercial products, or organizations imply endorsement by the US Government, any cancer registry, or the CCFR.

Colorectal Cancer Transdisciplinary (CORECT) Study: The CORECT Study was supported by the NCI/NIH, U.S. Department of Health and Human Services (grant numbers U19 CA148107, R01 CA81488, P30 CA014089, R01 CA197350, P01 CA196569, R01 CA201407) and National Institutes of Environmental Health Sciences, NIH (grant number T32 ES013678).

CORSA: The CORSA study was funded by Austrian Research Funding Agency (FFG) BRIDGE (grant 829675 to Andrea Gsur), the “Herzfelder’sche Familienstiftung” (grant to Andrea Gsur), and was supported by COST Action BM1206.

CPS-II: The American Cancer Society funds the creation, maintenance, and updating of the Cancer Prevention Study-II (CPS-II) cohort. This study was conducted with Institutional Review Board approval.

CRCGEN: Colorectal Cancer Genetics & Genomics, Spanish study was supported by Instituto de Salud Carlos III, co-funded by FEDER funds—a way to build Europe—(grants PI14–613 and PI09–1286), Agency for Management of University and Research Grants (AGAUR) of the Catalan Government (grant 2017SGR723), and Junta de Castilla y León (grant LE22A10–2). Sample collection of this work was supported by the Xarxa de Bancs de Tumors de Catalunya sponsored by Pla Director d’Oncologia de Catalunya (XBTC), Plataforma Biobancos PT13/0010/0013 and ICOBIOBANC, sponsored by the Catalan Institute of Oncology.

Czech Republic CCS: This work was supported by the Grant Agency of the Czech Republic (18–09709S, 20–03997S), by the Grant Agency of the Ministry of Health of the Czech Republic (grants AZV NV18/03/00199 and AZV NV19–09–00237), and Charles University grants Unce/Med/006 and Progress Q28/LF1.

DACHS: This work was supported by the German Research Council (BR 1704/6–1, BR 1704/6–3, BR 1704/6–4, CH 117/1–1, HO 5117/2–1, HE 5998/2–1, KL 2354/3–1, RO 2270/8–1, and BR 1704/17–1), the Interdisciplinary Research Program of the National Center for Tumor Diseases (NCT), Germany, and the German Federal Ministry of Education and Research (01KH0404, 01ER0814, 01ER0815, 01ER1505A, and 01ER1505B).

DALS: NIH (R01 CA48998 to M.L. Slattery).

EDRN: This work is funded and supported by the NCI, EDRN Grant (U01 CA 84968–06).

EPIC: The coordination of EPIC is financially supported by International Agency for Research on Cancer (IARC) and also by the Department of Epidemiology and Biostatistics, School of Public Health, Imperial College London, which has additional infrastructure support provided by the NIHR Imperial Biomedical Research Centre (BRC). The national cohorts are supported by Danish Cancer Society (Denmark); Ligue Contre le Cancer, Institut Gustave Roussy, Mutuelle Générale de l’Education Nationale, Institut National de la Santé et de la Recherche Médicale (INSERM) (France); German Cancer Aid, German Cancer Research Center (DKFZ), German Institute of Human Nutrition Potsdam-Rehbruecke (DIfE), Federal Ministry of Education and Research (BMBF; Germany); Associazione Italiana per la Ricerca sul Cancro-AIRC-Italy, Compagnia di SanPaolo and National Research Council (Italy); Dutch Ministry of Public Health, Welfare and Sports (VWS), Netherlands Cancer Registry (NKR), LK Research Funds, Dutch Prevention Funds, Dutch ZON (Zorg Onderzoek Nederland), World Cancer Research Fund (WCRF), Statistics Netherlands (The Netherlands); Health Research Fund (FIS) - Instituto de Salud Carlos III (ISCIII), Regional Governments of Andalucía, Asturias, Basque Country, Murcia and Navarra, and the Catalan Institute of Oncology (ICO; Spain); Swedish Cancer Society, Swedish Research Council and County Councils of Skåne and Västerbotten (Sweden); Cancer Research UK (14136 to EPIC-Norfolk;

C8221/A29017 to EPIC-Oxford), Medical Research Council (1000143 to EPIC-Norfolk; MR/M012190/1 to EPIC-Oxford, United Kingdom).

ESTHER/VERDI. This work was supported by grants from the Baden-Württemberg Ministry of Science, Research and Arts and the German Cancer Aid.

Harvard cohorts: HPFS is supported by the NIH (P01 CA055075, U01 CA167552, U01 CA167552, R01 CA137178, R01 CA151993, and R35 CA197735), NHS by the NIH (P01 CA087969, U01 CA186107, R01 CA137178, R01 CA151993, and R35 CA197735), and PHS by the NIH (R01 CA042182).

Hawaii Adenoma Study: NCI grants R01 CA72520.

Kentucky: This work was supported by the following grant support: Clinical Investigator Award from Damon Runyon Cancer Research Foundation (CI-8); NCI R01CA136726.

LCCS: The Leeds Colorectal Cancer Study was funded by the Food Standards Agency and Cancer Research UK Programme Award (C588/A19167).

MCCS cohort recruitment was funded by VicHealth and Cancer Council Victoria. The MCCS was further supported by Australian NHMRC grants 509348, 209057, 251553, and 504711 and by infrastructure provided by Cancer Council Victoria. Cases and their vital status were ascertained through the Victorian Cancer Registry (VCR) and the Australian Institute of Health and Welfare (AIHW), including the National Death Index and the Australian Cancer Database.

MEC: NIH (R37 CA54281, P01 CA033619, and R01 CA063464).

MECC: This work was supported by the NIH, U.S. Department of Health and Human Services (R01 CA81488, R01 CA197350).

NCCCS I & II: The authors acknowledge funding support for this project from the NIH, R01 CA66635 and P30 DK034987.

NFCCR: This work was supported by an Interdisciplinary Health Research Team award from the Canadian Institutes of Health Research (CRT 43821); the NIH, U.S. Department of Health and Human Services (U01 CA74783); and NCI of Canada grants (18223 and 18226). The authors wish to acknowledge the contribution of Alexandre Belisle and the genotyping team of the McGill University and Génome Québec Innovation Centre, Montréal, Canada, for genotyping the Sequenom panel in the NFCCR samples. Funding was provided to Michael O. Woods by the Canadian Cancer Society Research Institute.

PLCO: Intramural Research Program of the Division of Cancer Epidemiology and Genetics and supported by contracts from the Division of Cancer Prevention, NCI, NIH, DHHS. Funding was provided by NIH, Genes, Environment and Health Initiative (GEI) Z01 CP 010200, NIH U01 HG004446, and NIH GEI U01 HG 004438.

SELECT: Research reported in this publication was supported in part by the NCI of the NIH under award numbers U10 CA37429 (CD Blanke) and U01 CA182883 (CM Tangen/IM Thompson). The content is solely the responsibility of the authors and does not necessarily represent the official views of the NIH.

SMS: This work was supported by the NCI (grant P01 CA074184 to J.D. Potter and P.A. Newcomb, grants R01 CA097325, R03 CA153323, and K05 CA152715 to P.A. Newcomb, and the National Center for Advancing Translational Sciences at the NIH (grant KL2 TR000421)

REACH: This work was supported by the NCI (grant P01 CA074184 to J.D. Potter and P.A. Newcomb, grants R01 CA097325, R03 CA153323, and K05 CA152715 to P.A. Newcomb, and the National Center for Advancing Translational Sciences at the NIH (grant KL2 TR000421 to A.N.B.-H.)

UK Biobank: This research has been conducted using the UK Biobank Resource under Application Number 8614

VITAL: NIH (K05 CA154337).

WHI: The WHI program is funded by the National Heart, Lung, and Blood Institute, NIH, U.S. Department of Health and Human Services through contracts HHSN268201100046C, HHSN268201100001C, HHSN268201100002C, HHSN268201100003C, HHSN268201100004C, and HHSN271201100004C.

CCFR: The Colon CFR graciously thanks the generous contributions of their study participants, dedication of study staff, and the financial support from the U.S. NCI, without which this important registry would not exist. The authors would like to thank the study participants and staff of the Seattle Colon Cancer Family Registry and the Hormones and Colon Cancer study (CORE Studies).

CLUE II: The authors thank the participants of Clue II and appreciate the continued efforts of the staff at the Johns Hopkins George W. Comstock Center for Public Health Research and Prevention in the conduct of the Clue II Cohort Study.

CORSA: The authors kindly thank all individuals who agreed to participate in the CORSA study. Furthermore, the authors thank all cooperating physicians and students and the Biobank Graz of the Medical University of Graz.

CPS-II: The authors thank the CPS-II participants and Study Management Group for their invaluable contributions to this research. The authors would also like to acknowledge the contribution to this study from central cancer registries supported through the Centers for Disease Control and Prevention National Program of Cancer

Registries, and cancer registries supported by the NCI Surveillance Epidemiology and End Results program.

Czech Republic CCS: The authors are thankful to all clinicians in major hospitals in the Czech Republic, without whom the study would not be practicable. The authors are also sincerely grateful to all patients participating in this study.

DACHS: The authors thank all participants and cooperating clinicians, and everyone who provided excellent technical assistance.

EDRN: The authors acknowledge all contributors to the development of the resource at University of Pittsburgh School of Medicine, Department of Gastroenterology, Department of Pathology, Hepatology and Nutrition and Biomedical Informatics.

EPIC: Where authors are identified as personnel of the International Agency for Research on Cancer/WHO, the authors alone are responsible for the views expressed in this article and they do not necessarily represent the decisions, policy or views of the International Agency for Research on Cancer/WHO.

Harvard cohorts (HPFS, NHS, PHS): The study protocol was approved by the Institutional Review Boards of the Brigham and Women's Hospital and Harvard T.H. Chan School of Public Health, and those of participating registries as required. The authors acknowledge Channing Division of Network Medicine, Department of Medicine, Brigham and Women's Hospital as home of the NHS. The authors would like to acknowledge the contribution to this study from central cancer registries supported through the Centers for Disease Control and Prevention's National Program of Cancer Registries (NPCR) and/or the NCI's Surveillance, Epidemiology, and End Results (SEER) Program. Central registries may also be supported by state agencies, universities, and cancer centers. Participating central cancer registries include the following: Alabama, Alaska, Arizona, Arkansas, California, Colorado, Connecticut, Delaware, Florida, Georgia, Hawaii, Idaho, Indiana, Iowa, Kentucky, Louisiana, Massachusetts, Maine, Maryland, Michigan, Mississippi, Montana, Nebraska, Nevada, New Hampshire, New Jersey, New Mexico, New York, North Carolina, North Dakota, Ohio, Oklahoma, Oregon, Pennsylvania, Puerto Rico, Rhode Island, Seattle SEER Registry, South Carolina, Tennessee, Texas, Utah, Virginia, West Virginia, Wyoming. The authors assume full responsibility for analyses and interpretation of these data.

Kentucky: The authors would like to acknowledge the staff at the Kentucky Cancer Registry.

LCCS: The authors acknowledge the contributions of Jennifer Barrett, Robin Waxman, Gillian Smith, and Emma Northwood in conducting this study.

NCCCS I & II: The authors would like to thank the study participants and the NC Colorectal Cancer Study staff.

PLCO: The authors thank the PLCO Cancer Screening Trial screening center investigators and the staff from Information Management Services Inc and Westat Inc. Most importantly, the authors thank the study participants for their contributions that made this study possible.

Cancer incidence data have been provided by the District of Columbia Cancer Registry, Georgia Cancer Registry, Hawaii Cancer Registry, Minnesota Cancer Surveillance System, Missouri Cancer Registry, Nevada Central Cancer Registry, Pennsylvania Cancer Registry, Texas Cancer Registry, Virginia Cancer Registry, and Wisconsin Cancer Reporting System. All are supported in part by funds from the Center for Disease Control and Prevention, National Program for Central Registries, local states or by the NCI, Surveillance, Epidemiology, and End Results program. The results reported here and the conclusions derived are the sole responsibility of the authors.

SELECT: The authors thank the research and clinical staff at the sites that participated on SELECT study, without whom the trial would not have been successful. The authors are also grateful to the 35,533 dedicated men who participated in SELECT.

WHI: The authors thank the WHI investigators and staff for their dedication, and the study participants for making the program possible. A full listing of WHI investigators can be found at: <http://www.whi.org/researchers/Documents%20Write%20a%20Paper/WHI%20Investigator%20Short%20List.pdf>.

The publication costs of this article were defrayed in part by the payment of publication fees. Therefore, and solely to indicate this fact, this article is hereby marked "advertisement" in accordance with 18 USC section 1734.

Note

Supplementary data for this article are available at Cancer Research Online (<http://cancerres.aacrjournals.org/>).

Received November 25, 2022; revised February 25, 2023; accepted May 24, 2023; published first May 30, 2023.

References

- Papadimitriou N, Markozannes G, Kannelopoulou A, Critselis E, Alhardan S, Karafousia V, et al. An umbrella review of the evidence associating diet and cancer risk at 11 anatomical sites. *Nat Commun* 2021;12:4579.
- Murphy N, Moreno V, Hughes DJ, Vodicka L, Vodicka P, Aglago EK, et al. Lifestyle and dietary environmental factors in colorectal cancer susceptibility. *Mol Aspects Med* 2019;69:2–9.
- Islami F, Goding Sauer A, Miller KD, Siegel RL, Fedewa SA, Jacobs EJ, et al. Proportion and number of cancer cases and deaths attributable to potentially modifiable risk factors in the United States. *CA Cancer J Clin* 2018;68:31–54.
- Goon S, Kim H, Giovannucci E. Population attributable risk for colorectal and breast cancer in England, Wales, Scotland, Northern Ireland, and the United Kingdom [version 1; peer review: 1 approved, 1 not approved]. *AMRC Open Research* 2021;3.
- Campbell PT. Obesity: a certain and avoidable cause of cancer. *Lancet* 2014;384:727–8.
- Brandkvist M, Bjørngaard JH, Ødegård RA, Åsvold BO, Sund ER, Vie G. Quantifying the impact of genes on body mass index during the obesity epidemic: longitudinal findings from the HUNT study. *BMJ* 2019;366:l4067.
- Di Cesare M, Bentham J, Stevens G, Zhou B, Danaei G, Lu Y, et al. Trends in adult body mass index in 200 countries from 1975 to 2014: a pooled analysis of 1698 population-based measurement studies with 19.2 million participants. *Lancet North Am Ed* 2016;387:1377–96.
- Huyghe JR, Bien SA, Harrison TA, Kang HM, Chen S, Schmit SL, et al. Discovery of common and rare genetic risk variants for colorectal cancer. *Nat Genet* 2019;51:76–87.
- Peters U, Bien S, Zubair N. Genetic architecture of colorectal cancer. *Gut* 2015;64:1623–36.
- Peters U, Jiao S, Schumacher FR, Hutter CM, Aragaki AK, Baron JA, et al. Identification of genetic susceptibility loci for colorectal tumors in a genome-wide meta-analysis. *Gastroenterology* 2013;144:799–807.
- Schmit SL, Schumacher FR, Edlund CK, Conti DV, Ihenacho U, Wan P, et al. Genome-wide association study of colorectal cancer in Hispanics. *Carcinogenesis* 2016;37:547–56.
- Schmit SL, Edlund CK, Schumacher FR, Gong J, Harrison TA, Huyghe JR, et al. Novel common genetic susceptibility loci for colorectal cancer. *J Natl Cancer Inst* 2019;111:146–57.
- Fernandez-Rozadilla C, Timofeeva M, Chen Z, Law P, Thomas M, Schmit S, et al. Deciphering colorectal cancer genetics through multi-omic analysis of 100,204 cases and 154,587 controls of European and east Asian ancestries. *Nat Genet* 2023;55:89–99.
- Campbell PT, Lin Y, Bien SA, Figueiredo JC, Harrison TA, Guinter MA, et al. Association of body mass index with colorectal cancer risk by genome-wide variants. *J Natl Cancer Inst* 2021;113:38–47.
- He J, Wilkens LR, Stram DO, Kolonel LN, Henderson BE, Wu AH, et al. Generalizability and epidemiologic characterization of eleven colorectal cancer GWAS hits in multiple populations. *Cancer Epidemiol Biomarkers Prev* 2011;20:70–81.
- Kantor ED, Hutter CM, Minnier J, Berndt SI, Brenner H, Caan BJ, et al. Gene-environment interaction involving recently identified colorectal cancer susceptibility Loci. *Cancer Epidemiol Biomarkers Prev* 2014;23:1824–33.
- Gauderman WJ, Zhang P, Morrison JL, Lewinger JP. Finding novel genes by testing $G \times E$ interactions in a genome-wide association study. *Genet Epidemiol* 2013;37:603–13.
- Gauderman WJ, Mukherjee B, Aschard H, Hsu L, Lewinger JP, Patel CJ, et al. Update on the state of the science for analytical methods for gene-environment interactions. *Am J Epidemiol* 2017;186:762–70.
- Hutter CM, Chang-Claude J, Slattery ML, Pflugeisen BM, Lin Y, Duggan D, et al. Characterization of gene-environment interactions for colorectal cancer susceptibility loci. *Cancer Res* 2012;72:2036–44.
- Global BMIMC, Di Angelantonio E, Bhupathiraju Sh N, Wormser D, Gao P, Kaptoge S, et al. Body mass index and all-cause mortality: individual-participant-data meta-analysis of 239 prospective studies in four continents. *Lancet* 2016;388:776–86.
- Das S, Forer L, Schönherr S, Sidore C, Locke AE, Kwong A, et al. Next-generation genotype imputation service and methods. *Nat Genet* 2016;48:1284–7.
- Guido Schwarzer JRC, Gerta Rücker. *Meta-Analysis with R*. Switzerland: Springer, Cham; 2015. 252 p.
- Morrison J. GxEScanR: run GWAS/GWEIS scans using binary dosage files. 2.0.2020.
- Gauderman WJ, Kim A, Conti DV, Morrison J, Thomas DC, Vora H, et al. A unified model for the analysis of gene-environment interaction. *Am J Epidemiol* 2019;188:760–7.
- Vanderweele TJ, Ko YA, Mukherjee B. Environmental confounding in gene-environment interaction studies. *Am J Epidemiol* 2013;178:144–52.
- Pruim RJ, Welch RP, Sanna S, Teslovich TM, Chines PS, Gliedt TP, et al. LocusZoom: regional visualization of genome-wide association scan results. *Bioinformatics* 2010;26:2336–7.
- Díez-Obrero V, Dampier CH, Moratalla-Navarro F, Devall M, Plummer SJ, Díez-Villanueva A, et al. Genetic effects on transcriptome profiles in colon epithelium provide functional insights for genetic risk loci. *Cell Mol Gastroenterol Hepatol* 2021;12:181–97.
- Du M, Jiao S, Bien SA, Gala M, Abecasis G, Bezieau S, et al. Fine-mapping of common genetic variants associated with colorectal tumor risk identified potential functional variants. *PLoS One* 2016;11:e0157521.
- Law PJ, Timofeeva M, Fernandez-Rozadilla C, Broderick P, Studd J, Fernandez-Tajes J, et al. Association analyses identify 31 new risk loci for colorectal cancer susceptibility. *Nat Commun* 2019;10:2154.
- Tomlinson IP, Webb E, Carvajal-Carmona L, Broderick P, Howarth K, Pittman AM, et al. A genome-wide association study identifies colorectal cancer susceptibility loci on chromosomes 10p14 and 8q23.3. *Nat Genet* 2008;40:623–30.
- Al-Tassan NA, Whiffin N, Hosking FJ, Palles C, Farrington SM, Dobbins SE, et al. A new GWAS and meta-analysis with 1000Genomes imputation identifies novel risk variants for colorectal cancer. *Sci Rep* 2015;5:10442.
- Kasi PM, Zafar SY, Grothey A. Is obesity an advantage in patients with colorectal cancer? *Expert Rev Gastroenterol Hepatol* 2015;9:1339–42.
- Thorleifsson G, Walters GB, Gudbjartsson DF, Steinthorsdottir V, Sulem P, Helgadóttir A, et al. Genome-wide association yields new sequence variants at seven loci that associate with measures of obesity. *Nat Genet* 2009;41:18–24.
- Frayling TM, Timpson NJ, Weedon MN, Zeggini E, Freathy RM, Lindgren CM, et al. A common variant in the FTO gene is associated with body mass index and predisposes to childhood and adult obesity. *Science* 2007;316:889–94.
- Hinney A, Nguyen TT, Scherag A, Friedel S, Brönnner G, Müller TD, et al. Genome-wide association (GWA) study for early onset extreme obesity supports the role of fat mass and obesity associated gene (FTO) variants. *PLoS One* 2007;2:e1361.
- Scuteri A, Sanna S, Chen WM, Uda M, Albai G, Strait J, et al. Genome-wide association scan shows genetic variants in the FTO gene are associated with obesity-related traits. *PLoS Genet* 2007;3:e115.
- Pulit SL, Stoneman C, Morris AP, Wood AR, Glastonbury CA, Tyrrell J, et al. Meta-analysis of genome-wide association studies for body fat distribution in 694 649 individuals of European ancestry. *Hum Mol Genet* 2019;28:166–74.
- Labat-de-Hoz L, Alonso MA. Formins in human disease. *Cells* 2021;10:2554.
- Zhou F, Leder P, Martin SS. Formin-1 protein associates with microtubules through a peptide domain encoded by exon-2. *Exp Cell Res* 2006;312:1119–26.
- Yang Y, Qu R, Fan T, Zhu X, Feng Y, Yang Y, et al. Cross-talk between microtubules and the linker of nucleoskeleton complex plays a critical role in the adipogenesis of human adipose-derived stem cells. *Stem Cell Res Ther* 2018;9:125–.
- Gagné-Ouellet V, Breton E, Thibeault K, Fortin CA, Desgagné V, Girard Tremblay É, et al. Placental epigenome-wide association study identified loci associated with childhood adiposity at 3 years of age. *Int J Mol Sci* 2020;21:7201.
- Pruyne D, Evangelista M, Yang C, Bi E, Zigmund S, Bretscher A, et al. Role of formins in actin assembly: nucleation and barbed-end association. *Science* 2002;297:612–5.
- Shimada A, Nyitrai M, Vetter IR, Kühlmann D, Bugyi B, Narumiya S, et al. The core FH2 domain of diaphanous-related formins is an elongated actin binding protein that inhibits polymerization. *Mol Cell* 2004;13:511–22.
- Higgs HN, Peterson KJ. Phylogenetic analysis of the formin homology 2 domain. *Mol Biol Cell* 2005;16:1–13.
- Woychik RP, Maas RL, Zeller R, Vogt TF, Leder P. 'Formins': proteins deduced from the alternative transcripts of the limb deformity gene. *Nature* 1990;346:850–3.
- Al-Qattan MM, Alkuraya FS. Cenani-Lenz syndrome and other related syndactyly disorders due to variants in LRP4, GREM1/FMN1, and APC: Insight into the pathogenesis and the relationship to polyposis through the WNT and BMP antagonistic pathways. *Am J Med Genet A* 2019;179:266–79.

47. Patel N, Faqeih E, Anazi S, Alfawareh M, Wakil SM, Colak D, et al. A novel APC mutation defines a second locus for Cenani-Lenz syndrome. *J Med Genet* 2015; 52:317–21.
48. Lee HK, Deneen B. Daam2 is required for dorsal patterning via modulation of canonical Wnt signaling in the developing spinal cord. *Dev Cell* 2012;22: 183–96.
49. Welsh IC, Thomsen M, Gludish DW, Alfonso-Parra C, Bai Y, Martin JF, et al. Integration of left-right Pitx2 transcription and Wnt signaling drives asymmetric gut morphogenesis via Daam2. *Dev Cell* 2013;26:629–44.
50. Coghill A, Passarelli M, Makar K, Zheng Y, Potter J, Wernli K, et al. Abstract B73: Body mass index modifies the association between SMAD7 polymorphism rs4939827 and colorectal cancer risk. *Cancer Prev Res* 2010; 3:B73–B.
51. Huybrechts Y, Mortier G, Boudin E, Van Hul W. WNT signaling and bone: lessons from skeletal dysplasias and disorders. *Front Endocrinol* 2020;11:165.
52. Dutton LR, Hoare OP, McCorry AMB, Redmond KL, Adam NE, Canamara S, et al. Fibroblast-derived Gremlin1 localises to epithelial cells at the base of the intestinal crypt. *Oncotarget* 2019;10:4630–9.
53. Todd GM, Gao Z, Hyvönen M, Brazil DP, Ten Dijke P. Secreted BMP antagonists and their role in cancer and bone metastases. *Bone* 2020;137:115455.
54. Davis H, Irshad S, Bansal M, Rafferty H, Boitsova T, Bardella C, et al. Aberrant epithelial GREM1 expression initiates colonic tumorigenesis from cells outside the stem cell niche. *Nat Med* 2015;21:62–70.
55. Koppens MAJ, Davis H, Valbuena GN, Mulholland EJ, Nasreddin N, Colombe M, et al. Bone morphogenetic protein pathway antagonism by gremlin1 regulates epithelial cell fate in intestinal regeneration. *Gastroenterology* 2021;161:239–54.