

Copyright is owned by the Author of the thesis. Permission is given for a copy to be downloaded by an individual for the purpose of research and private study only. The thesis may not be reproduced elsewhere without the permission of the Author.

MASSEY UNIVERSITY

- 1. (a) I give permission for my thesis, entitled  
 FLOWER DEVELOPMENT OF THE CHINESE  
 GOOSEBERRY (Actinidia chinensis Planch.)  
 AND SOME FACTORS INFLUENCING IT  
 to be made available to readers in the Library under the conditions  
 determined by the Librarian.
- (b) I agree to my thesis, if asked for by another institution, being sent  
 away on temporary loan under conditions determined by the Librarian.
- (c) I also agree that my thesis may be microfilmed for Library use.

2. ~~I do not wish my thesis, entitled~~  
 .....  
 .....  
 .....  
 to be made available to readers or to be sent to other institutions  
 without my written consent within the next two years.

Signed R. Brundell  
 Date 16th November 1973

Strike out the sentence or phrase which does not apply.

The Library  
 Massey University  
 Palmerston North, N.Z.

The copyright of this thesis belongs to the author. Readers must sign their name in  
 the space below to show that they recognise this. They are asked to add their  
 permanent address.

Name and Address

Date

H. Mamm . RD1 TANGITEROIA 16 (3) 77  
H. M. Lees No. 3 Road, 223, Te Puke 7/9/80  
D. Strickland 1229 Ocean St San Luis Obispo CA 93901 USA 15 April 81

FLOWER DEVELOPMENT OF THE  
CHINESE GOOSEBERRY (*ACTINIDIA CHINENSIS* PLANCH.)  
AND SOME FACTORS INFLUENCING IT

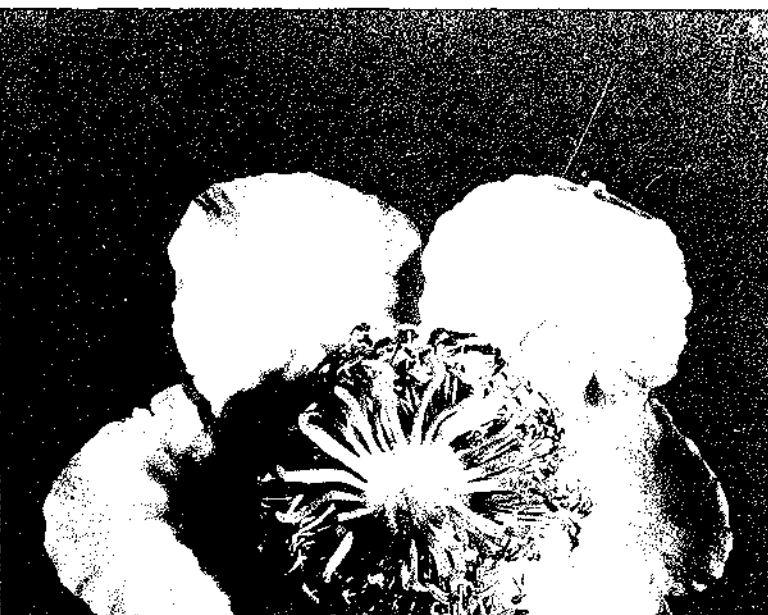
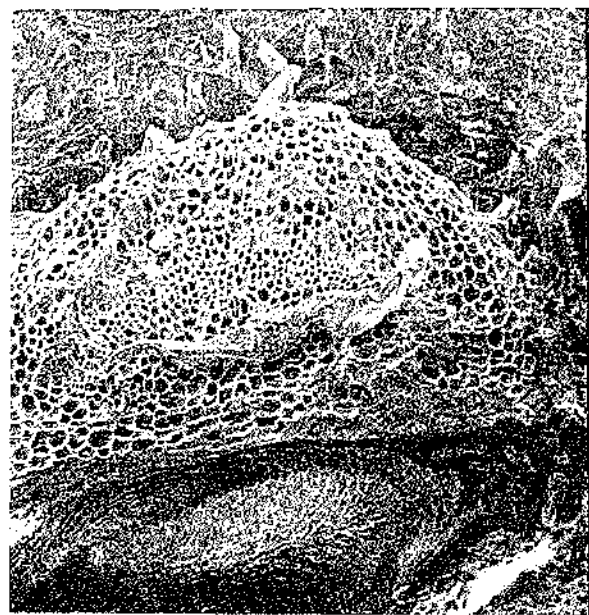
A thesis presented in partial fulfilment  
of the requirements for the degree of  
Master of Horticultural Science at  
Massey University

DAVID JOHN BRUNDELL

1973

### Frontispiece

top	Hayward shoots, full bloom stage
bottom left	Uninitiated flower primordium, Hayward
bottom right	Terminal flower, Hayward



## TABLE OF CONTENTS

<u>Chapter</u>		<u>Page</u>
	<u>ACKNOWLEDGEMENTS</u>	
	<u>ABSTRACT</u>	
1	<u>REVIEW OF LITERATURE</u>	
	<u>FLOWER DEVELOPMENT IN TEMPERATE AND SUBTROPICAL FRUIT TREES AND VINES</u>	
	A. <u>INTRODUCTION</u>	2
	B. <u>THE FLOWERING PROCESS</u>	2
	C. <u>GROWTH AND FLOWERING CHARACTERISTICS OF ACTINIDIA SPECIES</u>	4
	D. <u>THE RELATIONSHIP BETWEEN VEGETATIVE AND REPRODUCTIVE GROWTH AND THE EFFECT OF SHOOT REMOVAL</u>	7
	E. <u>THE ROLE OF LEAVES AND BUD SCALES AND THE EFFECT OF DEFOLIATION</u>	9
	F. <u>THE ROLE OF CARBOHYDRATES AND MINERAL NUTRIENTS</u>	11
	G. <u>THE ROLE OF THE REST PERIOD AND THE EFFECT OF TEMPERATURE</u>	12
	H. <u>THE ROLE OF HORMONES AND THE EFFECT OF APPLIED GROWTH REGULATORS</u>	15
	I. <u>THE ROLE OF LIGHT AND THE EFFECT OF SHADE</u>	17
	J. <u>OTHER FACTORS INFLUENCING FLOWER DEVELOPMENT</u>	18
	I The effect of water	18
	II The effect of girdling	18
	III The effect of the crop	19
	IV The effect of gravity	19
2	<u>MATERIALS AND METHODS</u>	
	A. <u>INTRODUCTION</u>	20
	B. <u>EXPERIMENTAL PLOTS AND SAMPLING TECHNIQUES</u>	21
	I Experimental plantings	21
	II Sampling Techniques and Parameters Recorded	21
	(a) Flower developmental studies (1971)	21

(b)	Field experimental studies (1971)	21
(c)	Single node hardwood cutting studies	23
(i)	Tipping, shading and defoliation treatments (1971)	23
(ii)	Chilling treatments (1972)	25
(d)	Flower distribution survey (1971)	26
III	Terminology	26

## 3

THE COURSE OF FLOWER AND SHOOT DEVELOPMENT

A.	<u>INTRODUCTION</u>	28
B.	<u>EXPERIMENTAL OBSERVATIONS AND RESULTS</u>	28
I	Bud Growth	28
(a)	Bud development	28
(b)	The winter bud	30
II	Vegetative Growth	32
(a)	Bud burst	32
(b)	Shoot development	35
(i)	Extension growth	35
(ii)	Thickening growth	35
(c)	Leaf development	35
(i)	Heteroblastic changes	35
(ii)	Leaf production	39
(d)	Internode development	42
(e)	Basal bud development	42
(i)	Number of basal buds	42
(ii)	Post bud burst development	42
III	Reproductive Growth	44
(a)	Flower bud development	44
(i)	The course of terminal bud development	44
(ii)	Aborted (aberrant) flower development	48
(iii)	Lateral flower bud development	50
(b)	Flower distribution	53
(i)	Number of reproductive axils per shoot along a lateral	53
(ii)	Number of functional flowering axils per shoot	53
(iii)	Variation in flower bud development along a shoot	53

<u>Chapter</u>	<u>Page</u>
(c) Flower bud growth patterns	58
(i) Flower bud growth	58
(ii) Ovary growth	60
(iii) Growth of flower parts over late stages of development	60
(iv) Quantitative differences between terminal and lateral blooms	60
IV Phyllotaxis	60
(a) Description of the phyllotaxy	60
(b) Direction of the phyllotactic helix	64
C. <u>DISCUSSION</u>	66

4     THE EFFECT OF DEFOLIATION, SHADING, AND TIPPING ON FLOWER DEVELOPMENT AND CONCURRENT VEGETATIVE GROWTH

A. <u>INTRODUCTION</u>	73
B. <u>EXPERIMENTAL OBSERVATIONS AND RESULTS</u>	76
I Reproductive Growth	76
(a) Number of flowers per shoot	76
(b) Average ovary or flower bud size per shoot	80
II Vegetative Growth	81
(a) Leaf growth	81
(i) Leaf production per shoot	81
(ii) Average leaf size per shoot	84
(b) Shoot growth	84
(i) Shoot length	84
(ii) Shoot thickness	86
III New Bud Development	87
C. <u>DISCUSSION</u>	88

5     THE EFFECT OF CHILLING ON THE TERMINATION OF REST AND FLOWERING

A. <u>INTRODUCTION</u>	95
B. <u>EXPERIMENTAL OBSERVATIONS AND RESULTS</u>	96



I	Bud Burst	96
	(a) Days to bud burst	96
	(b) Percentage bud burst	96
II	Flower Bud Development	99
	(a) Number of reproductive axils per shoot	99
	(b) Number of aborted reproductive axils per shoot	99
	(c) Number of flower buds per shoot	102
	(i) Terminal flower buds	102
	(ii) Lateral flower buds	102
	(iii) Total number of flower buds	104
	(d) Average flower bud size per shoot	104
	(i) Terminal flower buds	104
	(ii) Lateral flower buds	104
	(iii) Average flower bud size (all buds included)	110
C.	<u>DISCUSSION</u>	110

A SURVEY OF THE FLOWERING CHARACTERISTICS OF VARIOUS CULTIVARS AND STAMINATE VINES

A.	<u>INTRODUCTION</u>	117
B.	<u>EXPERIMENTAL OBSERVATIONS AND RESULTS</u>	117
I	Staminate Vines	117
	(a) Number of flowers and flowering axils per shoot	117
	(b) Percentage of shoots bursting per lateral	118
	(c) Flowering index for grouped vines	118
	(d) Number of flowers per inflorescence	121
	(e) Distribution of flowers per shoot	121
	(f) Flower opening sequence	121
II	Pistillate Cultivars	125
	(a) Number of flowers and flowering axils per shoot	125
	(b) Percentage of shoots bursting per lateral	125
	(c) Number of flowers per inflorescence	125

<u>Chapter</u>		<u>Page</u>
	(d) Distribution of flowers per shoot	125
	C. <u>DISCUSSION</u>	129
7	<u>CONCLUSIONS</u>	132
	<u>LITERATURE CITED</u>	

LIST OF TABLES

<u>Table</u>		<u>Page</u>
1	The effect of nodal position along a lateral on the number of basal bud axils per shoot in Hayward.	43
2	The effect of nodal position along a lateral on the number of reproductive axils per shoot in Hayward.	54
3	The growth of the flower parts of Hayward over the ten days preceding bloom.	61
4	The relationship between the number of petals in terminal flowers and lateral flowers at each flowering axil along a shoot in Alpha.	62
5	The relationship between the direction of the phyllotactic spiral of the bud (or shoot) and that of the lateral in Hayward.	65
6	The relationship between the direction of the phyllotactic spiral of the bud (or shoot) and of the lateral, and that of the vine in Hayward.	65
7	The effects of defoliation, shading, and tipping treatments on the number of reproductive axils per shoot, the number of flowering axils per shoot, and the average flower bud (or ovary) size per shoot in Hayward. (a) Single node cuttings. (b) Field studies.	79
8	The effects of defoliation, shading, and tipping treatments on the number of open leaves (or the total number of leaves) per shoot and the average leaf size per shoot in Hayward. (a) Single node cuttings. (b) Field studies.	82
9	The effects of defoliation, shading, and tipping treatments on the shoot length and thickness in Hayward. (a) Single node cuttings. (b) Field studies.	85

<u>Table</u>		<u>Page</u>
10	The effects of defoliation, shading, and tipping treatments on the number of leaf primordia in the new bud in Hayward. (a) Single node cuttings. (b) Field studies.	88
11	The effects of the period of chilling and the date of sampling on: (a) The number of days to bud burst. (b) The percentage bud burst.	97
12	The effects of the period of chilling and the date of sampling on: (a) The number of reproductive axils per shoot. (b) The number of aborted axils per shoot.	100
13	The effects of the period of chilling and the date of sampling on: (a) The number of early aborted axils per shoot. (b) The number of late aborted axils per shoot.	101
14	The effects of the period of chilling and the date of sampling on: (a) The number of terminal flower buds per shoot. (b) The number of lateral flower buds per shoot.	103
15	The effects of the period of chilling and the date of sampling on: (a) The total number of flower buds per shoot. (b) The average flower bud size (all buds included) per shoot.	105
16	Analysis of variance with orthogonal polynomials on the effects of the period of chilling and the date of sampling on the total number of flower buds per shoot.	108
17	The effects of the period of chilling and the date of sampling on: (a) The average terminal flower bud size per shoot. (b) The average lateral flower bud size per shoot.	109

<u>Table</u>		<u>Page</u>
18	Analysis of variance with orthogonal polynomials on the effects of the period of chilling and the date of sampling on the average flower bud size (all buds included) per shoot.	112
19	The number of flowers per shoot, the number of flowering axils per shoot, and the percentage bud burst for various staminate vines.	119
20	The number of flowers per shoot, the number of flowering axils per shoot, and the percentage bud burst for grouped staminate vines.	120
21	A flowering index of various staminate clones.	121
22	The number of flowers in inflorescences of various staminate clones.	122
23	The number of flowers per shoot, the number of flowering axils per shoot, and the percentage bud burst for various pistillate cultivars.	126
24	The number of flowers in inflorescences of various pistillate cultivars.	127

## LIST OF FIGURES

<u>Figure</u>		<u>Page</u>
1	Number of leaf primordia in the new bud of Hayward and Alpha. (a) From bud burst to full bloom. (b) For the 1971/72 season.	29
2	Leaf primordia dissected from the winter buds of Hayward and Alpha.	31
3	Shoot bud development, from the 'dormant' stage to the 'advanced open cluster' stage.	33
4	Non-determinate and determinate shoot growth in Hayward and Alpha.	36
5	Thickening of the shoot in Hayward and Alpha.	36
6	Non-determinate and determinate shoots of Hayward (38 dabb.) and Alpha (47 dabb.).	37
7	Heteroblastic leaf development in Hayward and Alpha.	38
8	Changes in leaf lamina growth at each axil along a shoot up to bloom (Hayward).	40
9	Changes in shoot length to each axil along a shoot up to bloom (Hayward).	40
10	Rate of leaf opening up to bloom in Hayward and Alpha.	41
11	Flower bud development stages in Hayward and Alpha.	45
12	Late flower bud development ('split calyx' stage to full bloom), Hayward.	47
13	Abnormal flower development. (a) Aberrant flower bud development, Hayward and Alpha. (b) Fasciated flower, Hayward. (c) Fasciated fruit, Hayward.	49

<u>Figure</u>		<u>Page</u>
14	Late shoot development, Hayward.	51
15	Stimulation of a basal bud into growth in Hayward.	51
16	The terminal portion of a dormant Hayward shoot (lateral).	51
17	Diagrammatic representation of a Chinese gooseberry inflorescence (compound dichasium).	52
18	Lateral flower bud development, Hayward.	52
19	The number of normal flowering axils per shoot, the number of aborted (aberrant) flowering axils per shoot, and the number of reproductive axils per shoot. (a) Hayward. (b) Alpha.	55
20	Flower bud growth at each reproductive axil along a shoot in Hayward.	57
21	Flower bud growth per shoot in Hayward and Alpha terminal flower buds, Alpha 2 <sup>o</sup> and 3 <sup>o</sup> lateral flower buds, and the change in the Hayward terminal flower bud breadth:width ratio with growth.	57
22	Early (up to 15 dabb.) flower bud growth and the change in the flower bud breadth:width ratio in Hayward as related to the external shoot bud stage and to the flower bud development stage.	59
23	Ovary growth per shoot and the change in the mean ovary breadth:width ratio per shoot in Hayward.	59
24	Characterisation of the phyllotactic spiral of the dissected winter bud of Hayward.	63
25	Defoliation, shading and tipping treatments on Hayward single node cuttings.	75
26	The shading treatment (50% shade) applied to Hayward shoots in the field.	75

<u>Figure</u>		<u>Page</u>
27	The effects of defoliation, shading and tipping on the growth and development of Hayward single node cuttings, sampled 25 dabb.	77
28	The effects of defoliation, shading and tipping on the growth and development of field grown shoots of Hayward, sampled close to bloom.	78
29	The effect of defoliation treatments on leaf production in Hayward. (a) Single node cuttings. (b) Field grown shoots.	83
30	The effect of the period of chilling and the date of sampling on the number of days to bud burst.	98
31	The effect of the period of chilling and the date of sampling on the total number of flower buds per shoot.	106
32	The effect of the period of chilling on flower bud development in different cultivars. (a) The forcing of unchilled Hayward, Alpha and Monty buds at sample date 3 (June). (b) The effect of chilling at sample date 3 (June) in Monty.	107
33	The effect of the period of chilling treatments and the date of sampling on the average flower bud size (all buds included) per shoot.	111
34	Number of flowers at each flowering axil along a shoot in various staminate clones.	123
35	The flower opening sequence of various staminate cultivars compared with that in Hayward.	124
36	Number of flowers at each flowering axil along a shoot in various pistillate cultivars.	128



### ACKNOWLEDGEMENTS

I wish to gratefully acknowledge Mr D.A. Slade, Department of Horticulture, Massey University and Dr R.M. Davison, Plant Diseases Division, D.S.I.R., for their guidance and constructive criticism throughout this study and in the preparation of the manuscript.

I wish to express my appreciation to Mr I.M.W. McEwen on whose property the bulk of the experimental work was carried out.

I would also like to thank: The Director of Plant Diseases Division, D.S.I.R., Mt. Albert for making laboratory space and equipment available; Ms A.M. Marshall and Mr S.A.D. Tucker for advice and help on statistical matters; Mr A.P. Underhill and Mr D.M. McVicker for photographic assistance; my mother and sister for typing this thesis; Mr W.S. Bertaud, Physics and Engineering Laboratory for the Scanning Electron Microphotograph in Figure 11; and to any persons remaining unnamed who gave advice and assistance on this work.

Finally, I wish to thank the Kiwi Fruit Export Promotion Committee and the New Zealand Citrus and Subtropical Council for their generous financial assistance.