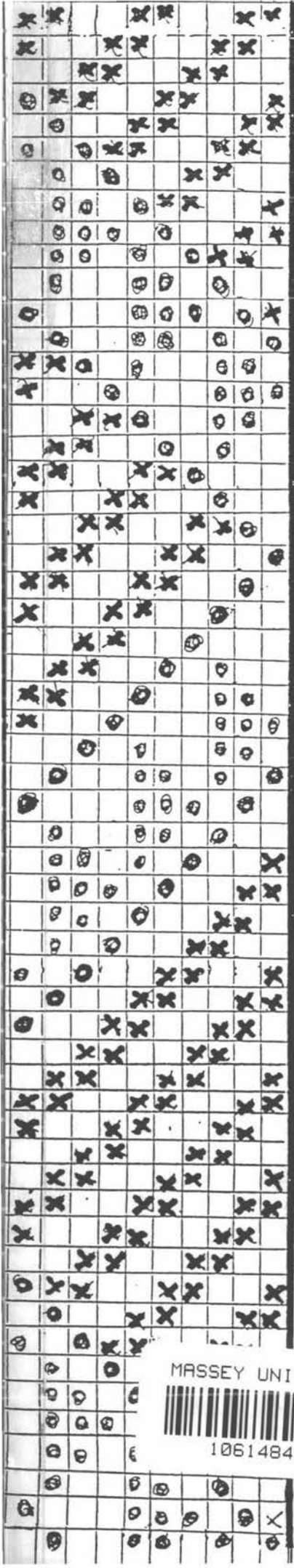


Copyright is owned by the Author of the thesis. Permission is given for a copy to be downloaded by an individual for the purpose of research and private study only. The thesis may not be reproduced elsewhere without the permission of the Author.



NGĀ

MARAE

O

TE

MĀHUREHURE:

NĀ

WIREMU

HŌHEPA M.A.

MASSEY UNIVERSITY



1061484130

He uri au no Te Mahurehure, i heke iho, au i a Rahiri.

Ahuaiti	=	Rahiri	=	Whakauru		
Uenukukuare = Karcariki				Kaharāu = Houtirunga		
Uewhātī = Hinotuhia		Hauhaua		Taurāpoho = Ihenga		
Uetaeroa = TeRahinga		Hineamaru		Tupoto = Kauwae		
Fangiao = Tuteauru		Makawouru		Koro koro	Miruiti	Tuiti
Kuiawai = Rangihana		Horahia		Waitaki	Rapehuamutu	
Ngao = Urumihia		Tarauaua		Angaora	Tatua	
Nuhu		Kuranui		Mihinga	Moeawa	
Kariraha				Hinukakara	Pua	
Hakoko					Iti	
Matapoto				Moka =	Hinewai	
Ahu	=	Tengo				
Pani = Anaru				Maraea = Katete		
Rekene				Mere = Whitingham		
Mita				Arihia		
Wahangu = Paerau						

Ko ngā kōrero e pā ana ki te pukapuka nei he mea tuhi nāku mo a mātou tamariki mokōpuna o te hapu e whākaingoatia nei ko Te Mahurehure. Ko te pātai e pēnei ana, "He aha ngā mea nui o roto i te ao Māori?"

Ko te whakahoki, "He tangata, he tangata, he tangata."

I roto i aku whakamārama katoa mo ō mātou marae e rima, i roto i taku kāinga iti, o Waima, ko ngā tāngata katoa ko rātou nei ngā kai-hautu me ngā kai-awhina i ngā kaupapa katoa, e pā ana ki ia marae, kei te whakanui au i a rātou katoa, no te mea ko rātou ngā kai-whakamahana i enei marae, i te ao, i te pō, i ngā rā, i ngā wiki, i ngā marama, huri te tau, huri te tau. Ko ngā taonga katoa na rātou i tuku iho ki a tātou, mai rā anō i te wā kōhatu, manaakitia, puritia, kia kore ai e memeha, i roto i te ao hurihuri, e noho nei tātou i roto inaianei.

Tamariki, mokopuna mā, kia mau mahara koutou i ngā wā katoa ki o tātou tūpuna kua wehewehe atu ki te po. Na rātou tātou katoa i tū tangata ai, i roto i tō tātou Māoritanga!

Ki taku hoa pūmau ki a Pākaka Tāwhai, kei te tangi atu te ngākau kua riro atu nei koe i te ringa kaha o aitua. Moe mai e hoa i roto i to moenga rca, wa te Matua i te rangi koe e tiaki i ngā wā katoa. Kia ora rawa atu koe mo o manaaki nunui ki ahau, i roto i taku whai i te matauranga M.A. i Massey University i roto i nga tau 1987 ki 1989.

He mea hanga taku whare, ko
Papatuanuku te paparahi, ko
Ranginui e titiro iho nei ko te
tuanui, ko aku maunga nga
poupou.

He whakatauaki mo aku maunga i roto i te Tai-Tokerau. Ko ngā marae katoa
o Te-Mahurehure kei raro i te maru o maunga Whakatere.

Pihanga-tohorā titiro ki Te Ramaroa;
Te Ramaroa titiro ki Whiria, ki te pakiaka o te riri, ki te kawa o Rāhiri;
Whiria titiro ki Panguru, ki Papata, ki te rākau tū papata ki te tai hauauru;
Panguru-Papata titiro ki Maungataniwha,
Maungataniwha titiro ki Tokerau,
Tokerau titiro ki Rākaumangamanga,
Rākaumangamanga titiro ki Tutāmoe,
Tutāmoe titiro ki Maunganui,
Maunganui titiro ki Whakatere,
Whakatere titiro ki Pihanga-tohōra.
Ehara aku maunga i te maunga haere, he maunga tū tonu, tū te ao, tū te pō.